


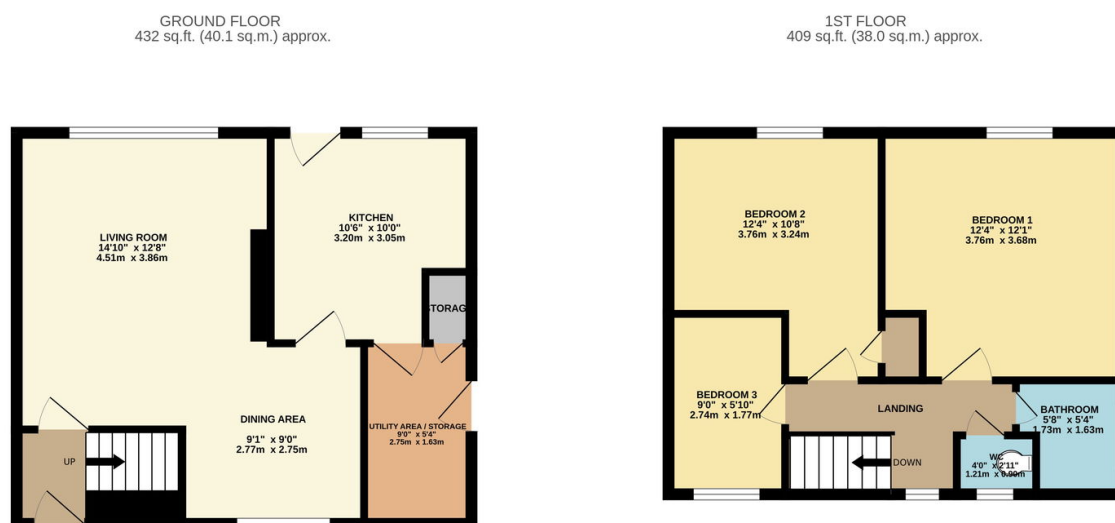
Longfellow Road, Birmingham, B30

£165,000

 3  1  2



- Three Bedrooms
- Large corner Plot
- New Roof commissioned in 2025
- Central Heating
- No Chain
- Off Road Parking
- Freehold
- Front, Rear and side gardens



TOTAL FLOOR AREA : 841 sq.ft. (78.1 sq.m.) approx.
Whilst every attempt has been made to ensure the accuracy of the floorplan contained here, measurements of doors, windows, rooms and any other items are approximate and no responsibility is taken for any error, omission or mis-statement. This plan is for illustrative purposes only and should be used as such by any prospective purchaser. The services, systems and appliances shown have not been tested and no guarantee as to their operability or efficiency can be given.
Made with Metropix ©2025

Spacious 3-Bedroom End Terraced Home on Longfellow Road, Birmingham

Located on a generous corner plot in the desirable area of Birmingham, this 3-bedroom end terraced property offers excellent potential for modernisation and further development. With a practical layout and spacious outdoor space, it presents a fantastic opportunity for families or investors alike.