



ASKING PRICE OF
£280,000
24 Mousehole Road
Paulsgrove, PO6 4JL

PROPERTY SUMMARY

This is a great family home! The combination of double glazing, gas central heating and a new boiler is definitely appealing, especially for energy efficiency. The three bedrooms and newly fitted bathroom should make it move-in ready. The large rear garden with sheds adds a nice touch for outdoor space and storage. The driveway is a great addition, offering off-road parking for convenience and security. It's ideal for families who need to park multiple vehicles or simply want the ease of parking close to the home.





ENTRANCE HALL

LOUNGE 13' 3" x 12' 5" (4.04m x 3.78m)

KITCHEN/DINER 18' 8" x 10' 3" (5.69m x 3.12m)

LANDING

BEDROOM ONE 13' 2" x 11' 2" (4.01m x 3.4m)

BEDROOM TWO 11' 2" x 10' 3" (3.4m x 3.12m)

BEDROOM THREE 8' 3" x 8' 0" (2.51m x 2.44m)

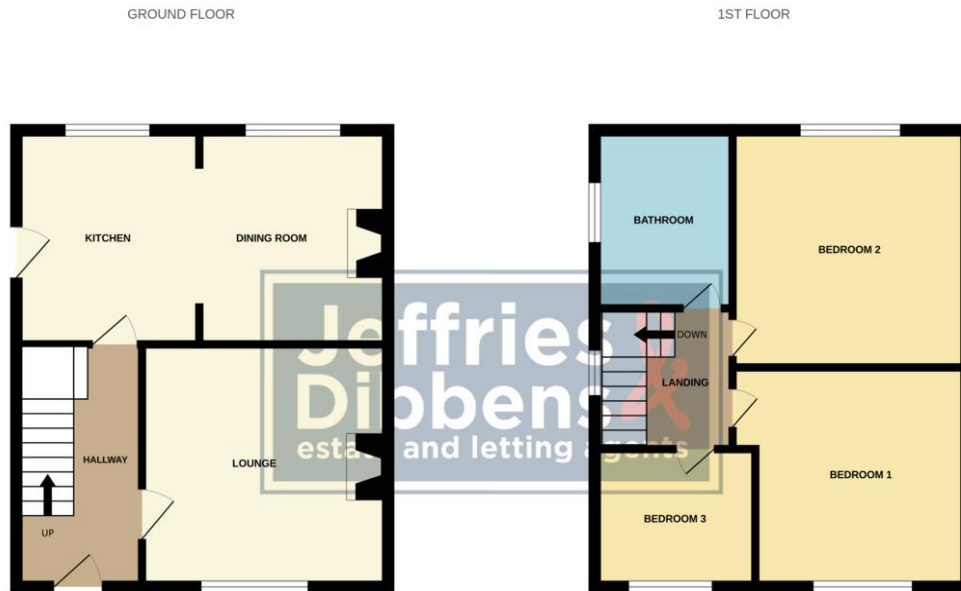
BATHROOM 7' 3" x 7' 2" (2.21m x 2.18m)

OUTSIDE

FRONT DRIVEWAY

ENCLOSED REAR GARDEN

THREE BRICK SHEDS



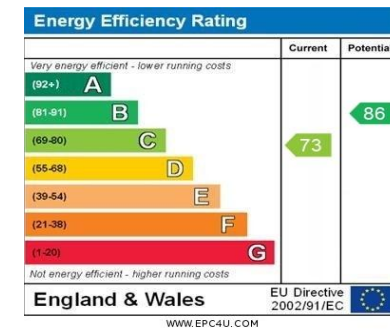
Whilst every attempt has been made to ensure the accuracy of the floorplan contained here, measurements of doors, windows, rooms and any other items are approximate and no responsibility is taken for any error, omission or mis-statement. This plan is for illustrative purposes only and should be used as such by any prospective purchaser. The services, systems and appliances shown have not been tested and no guarantee as to their operability or efficiency can be given.
Made with Metropix ©2025

LOCAL AUTHORITY
Portsmouth City Council

TENURE
Freehold

COUNCIL TAX BAND
Band B

VIEWINGS
By prior appointment only



Agents Note: Whilst every care has been taken to prepare these particulars, they are for guidance purposes only. All measurements are approximate and are for general guidance purposes only and whilst every care has been taken to ensure their accuracy, they should not be relied upon and potential buyers/tenants are advised to recheck the measurements



OFFICE ADDRESS
78 West Street, Portchester,
Fareham, PO16 9UN

CONTACT
023 9243 5000
portchester@jeffries.co.uk
www.jdea.co.uk