



Basement Flat, 63 Lansdowne Street, Hove
£300,000

MANSELL
McTAGGART
Trusted since 1947

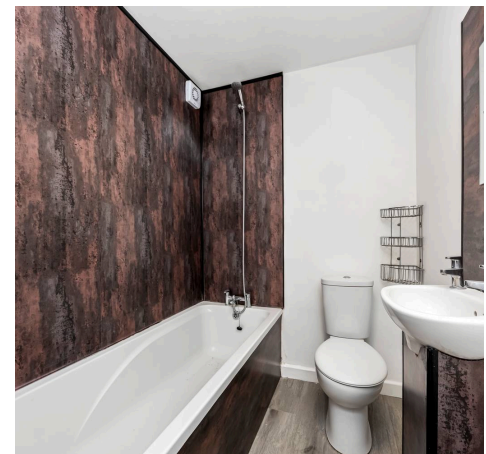
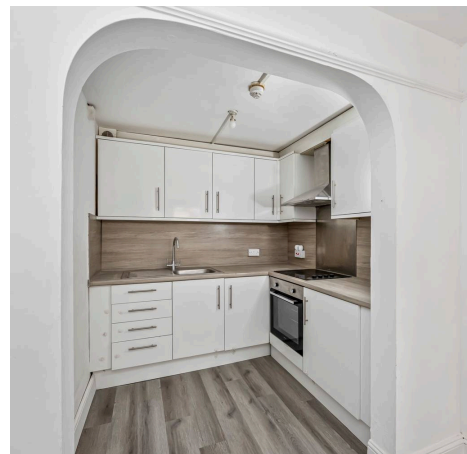
Basement Flat

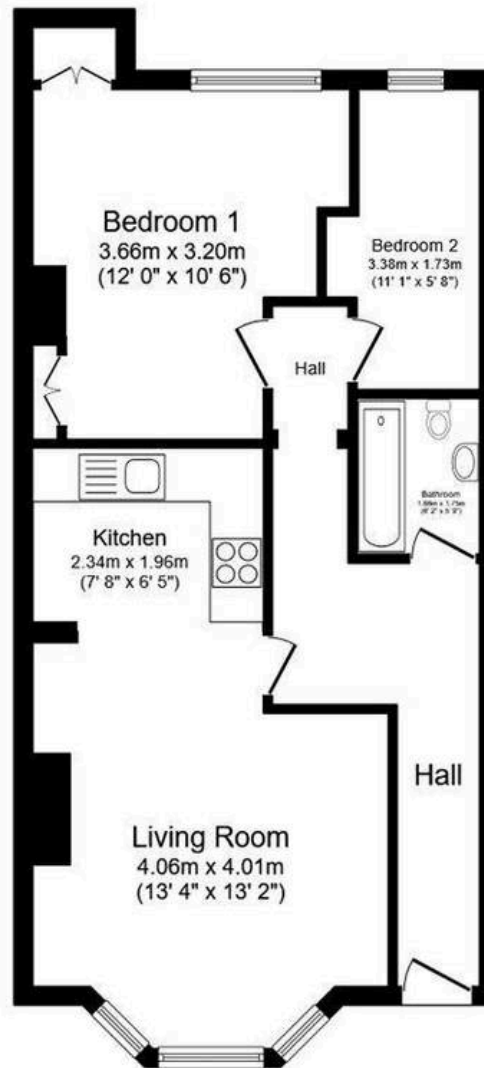
63 Lansdowne Street, Hove

Council Tax band: C

Tenure: Leasehold

- Two Bedroom Lower Ground Floor Flat
- West Facing Garden
- Open Plan Living Kitchen Room
- Walking Distance To Seafront, Hove Train Station & Church Road Shops, Bars & Restaurants
- Own Street Entrance
- Sold With No Onwards Chain





Floor Plan

Floor area 52.8 sq.m. (569 sq.ft.)

Total floor area: 52.8 sq.m. (569 sq.ft.)

This floor plan is for illustrative purposes only. It is not drawn to scale. Any measurements, floor areas (including any total floor area), openings and orientations are approximate. No details are guaranteed, they cannot be relied upon for any purpose and do not form any part of any agreement. No liability is taken for any error, omission or misstatement. A party must rely upon its own inspection(s). Powered by www.Propertybox.io



Mansell McTaggart Hove

170 Church Road, Hove - BN3 2DJ

01273 044929

hove@mansellmctaggart.co.uk

www.mansellmctaggart.co.uk/branch/hove/

