



Station House, Station Approach, Yiewsley, UB7 9DY

- Station House
- Furnished
- Lifts
- Video entry
- Third floor
- High street location
- Alarm
- EPC Rating- D

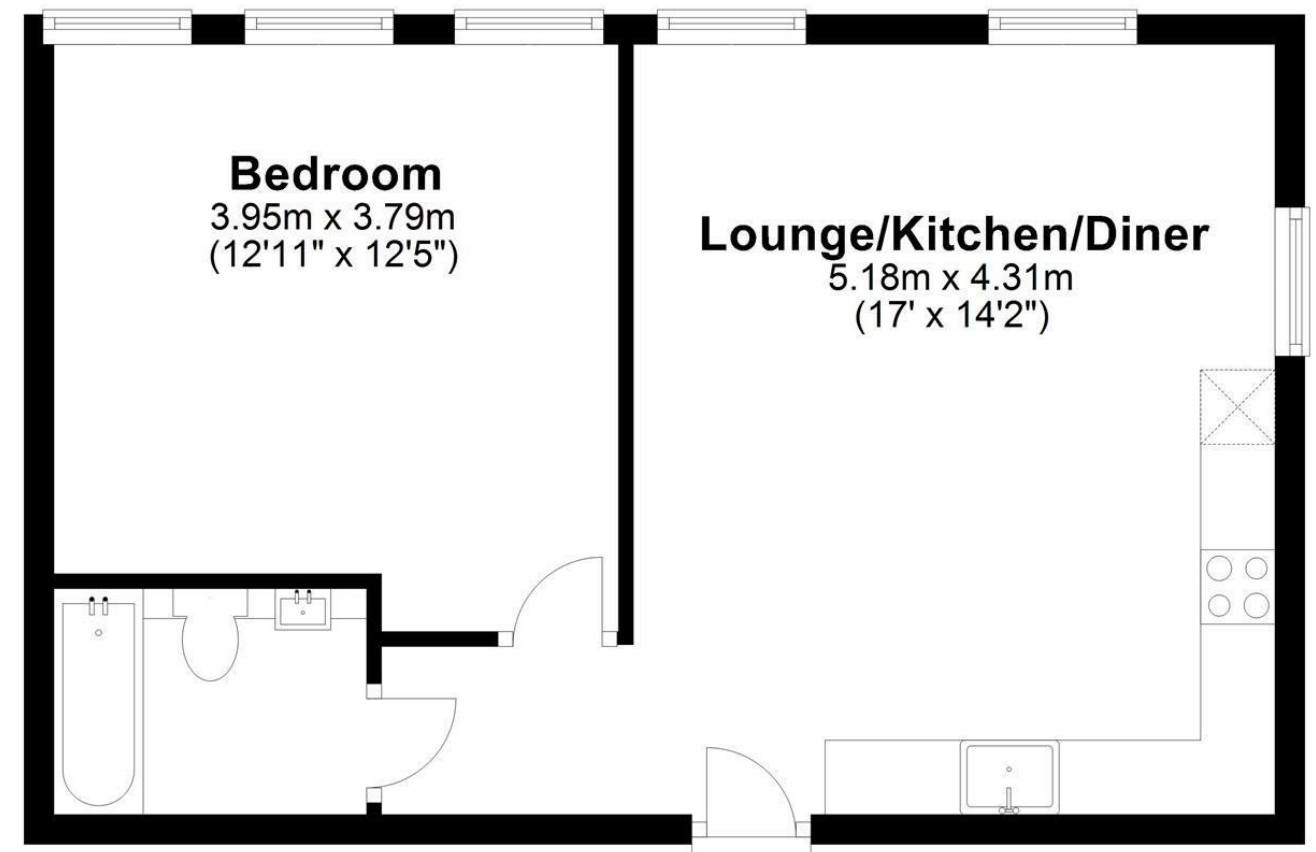
£1,375 PCM

Description

A modern third floor one bedroom apartment located in the heart of West Drayton in an exclusive development within a stones throw away from the station giving access into London Paddington and beyond. Furnished and available for July.

Third Floor

Approx. 42.5 sq. metres (457.3 sq. feet)



Total area: approx. 42.5 sq. metres (457.3 sq. feet)

IMPORTANT NOTICE

These particulars have been prepared upon information supplied by the Vendor and should be verified by your surveyors and solicitors. We have prepared these sales particulars as a general guide to give a broad description of the property. They are not intended to constitute part of an offer or contract. We have not carried out a structural survey and the services, appliances and specific fittings have not been tested. All photographs, measurements, floor plans and distances referred to are given as a guide only and should not be relied upon for the purchase of carpets or any other fixtures or fittings. Lease details service charge and ground rent (where applicable) are given as a guide only and should be checked and confirmed by your solicitor prior to exchange of contracts