



**Westport Place, Foundation Street, Ipswich, IP4 1BN**

**welcome to**

## **Westport Place, Foundation Street, Ipswich**

This stylish penthouse apartment benefits from two large, double bedrooms, a master bedroom with en suite, a separate bathroom, a private, outside terrace and a COMPLETE ONWARD CHAIN!

### **Entrance Hall**

An airing cupboard, carpet flooring, spotlights and an entry phone system.

### **Kitchen/Lounge/Diner**

Spacious, open plan room with double glazed windows to front, French doors to the private, outside terrace, carpet flooring and wood effect flooring to the kitchen area, one electric radiator, TV point, spotlights, eye and base level units in high gloss grey with white stone effect worktop surfaces, a grey sink plus drainer and chrome mixer tap, an integrated oven, electric hob and extractor hood, an integrated fridge/freezer, washing machine and dishwasher, tiled splashback.

### **Terrace**

Sun tap terrace with decked flooring, power, light and planters.

### **Master Bedroom**

Two double glazed windows to the front, carpet flooring, one electric radiator and spotlights.

### **En Suite**

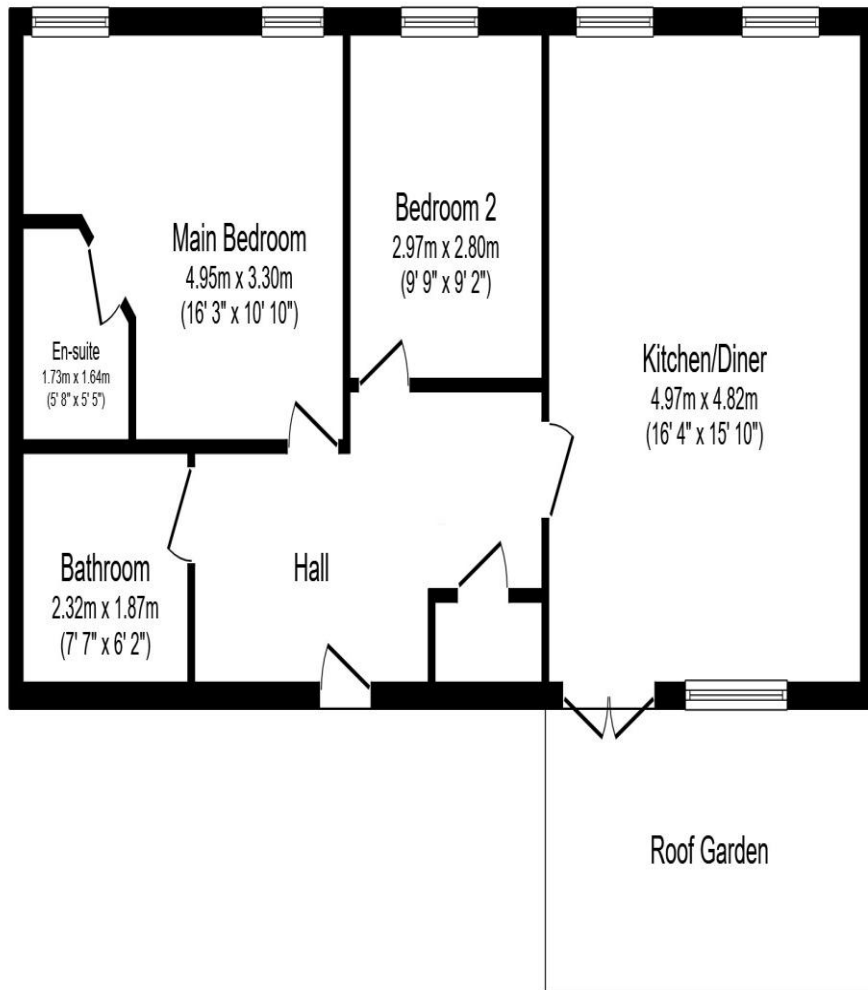
Low level WC, pedestal wash hand basin, a shower with glass enclosure, part tiled walls, tiled flooring, spotlights and extractor fan.

### **Bedroom Two**

Double glazed window to the side, carpet flooring, one electric radiator and spotlights.

### **Bathroom**

Low level WC, pedestal wash hand basin, a bath with overhead shower and glass screen, chrome heated towel rail, part tiled walls, tiled flooring, extractor fan and spot lights.



Ground Floor

Total floor area: 76.0 sq.m. (818 sq.ft.)

This floor plan is for illustrative purposes only. It is not drawn to scale. Any measurements, floor areas (including any total floor area), openings and orientations are approximate. No details are guaranteed, they cannot be relied upon for any purpose and do not form any part of any agreement. No liability is taken for any error, omission or misstatement. A party must rely upon its own inspection(s). Powered by [www.Propertybox.io](http://www.Propertybox.io)



**welcome to**  
**Westport Place, Foundation Street,**  
**Ipswich**

- Complete onward chain
- Two large double bedrooms
- En suite & separate bathroom
- Spacious, open plan kitchen/lounge/diner
- Private, outside terrace

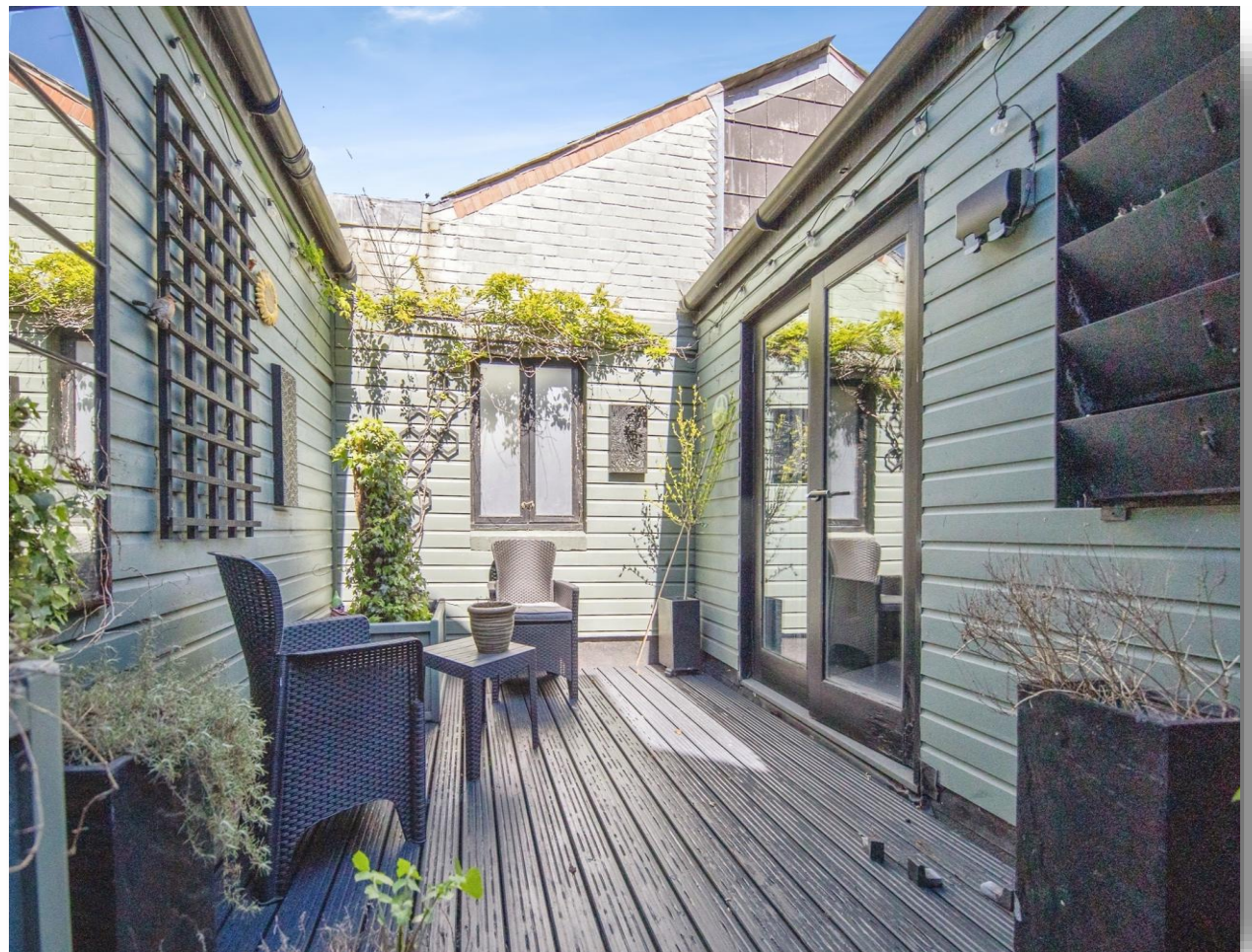
Tenure: Leasehold EPC Rating: C

Council Tax Band: B Service Charge: 200.00

Ground Rent: Ask Agent

This is a Leasehold property with details as follows; Term of Lease 125 years from 24 Jun 2017. Should you require further information please contact the branch. Please Note additional fees could be incurred for items such as Leasehold packs.

**£160,000**



**view this property online** [williamhbrown.co.uk/Property/IPS121498](http://williamhbrown.co.uk/Property/IPS121498)



Property Ref:  
IPS121498 - 0003

1. MONEY LAUNDERING REGULATIONS Intending purchasers will be asked to produce identification documentation at a later stage and we would ask for your co-operation in order that there is no delay in agreeing the sale. 2. These particulars do not constitute part or all of an offer or contract. 3. The measurements indicated are supplied for guidance only and as such must be considered incorrect. Potential buyers are advised to recheck measurements before committing to any expense. 4. We have not tested any apparatus, equipment, fixtures or services and it is in the buyers interest to check the working condition of any appliances. 5. Where an EPC, or a Home Report (Scotland only) is held for this property, it is available for inspection at the branch by appointment. If you require a printed version of a Home Report, you will need to pay a reasonable production charge reflecting printing and other costs. 6. We are not able to offer an opinion either written or verbal on the content of these reports and this must be obtained from your legal representative. 7. Whilst we take care in preparing these reports, a buyer should ensure that his/her legal representative confirms as soon as possible all matters relating to title including the extent and boundaries of the property and other important matters before exchange of contracts.

William H Brown is a trading name of Sequence (UK) Limited which is registered in England and Wales under company number 4268443, Registered Office is Cumbria House, 16-20 Hockliffe Street, Leighton Buzzard, Bedfordshire, LU7 1GN. VAT Registration Number is 500 2481 05.



**william h brown**



**01473 226101**



[ipswich@williamhbrown.co.uk](mailto:ipswich@williamhbrown.co.uk)



16-18 Wolsey House, Princes Street, IPSWICH,  
Suffolk, IP1 1QT



**[williamhbrown.co.uk](http://williamhbrown.co.uk)**