



Connells

Bromham Road
Bedford



Property Description

Offered with tenants in situ is this spacious and modern five bedroom detached property located in Biddenham close to Biddenham International School and Bedford train station. The property consists of, an entrance hall, cloakroom w/c, kitchen/breakfast room, with a utility space and through lounge dining room. On the first floor there are three double bedrooms, the master has the benefit of a three-piece en-suite shower room and there's a separate family bathroom. To the second floor there are two further double bedrooms of which one has the second three-piece en-suite.

Externally the property has a low maintenance front garden and to the rear there is a private rear garden mainly laid to lawn with gated access to the double garage. There is an external light and tap.

The vendor informs us the property is achieving £3580 per calendar month excluding bills.



Entrance Hall

Lounge

19' 7" x 10' 9" (5.97m x 3.28m)

Kitchen/Utility Area

19' 6" x 16' 8" Max (5.94m x 5.08m Max)

First Floor

Landing

Bedroom One

14' 4" x 10' 2" (4.37m x 3.10m)

Ensuite

Bedroom Three

11' x 10' 5" (3.35m x 3.17m)

Bedroom Four

10' 9" x 9' 3" (3.28m x 2.82m)

Bedroom Five

10' 5" x 10' 3" (3.17m x 3.12m)

Bathroom

Second Floor

Bedroom Two

Irregular Shaped Room 10' 5" x 10' 3" (3.17m x 3.12m)

Ensuite

Bedroom Five

Irregular Shaped Room 16' 8" x 14' 9" (5.08m x 4.50m)

External

Rear Garden

Garage

Driveway & Parking

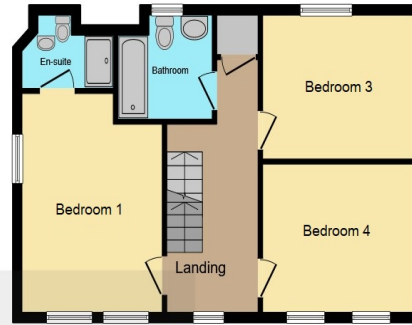




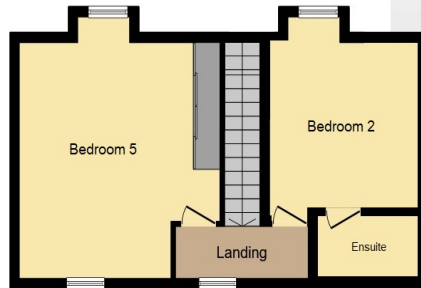




Ground Floor



First Floor



Second Floor

Connells

This floor plan is for illustrative purposes only. It is not drawn to scale. Any measurements, floor areas (including any total floor area), openings and orientation are approximate. No details are guaranteed, they cannot be relied upon for any purpose and they do not form part of any agreement. No liability is taken for any error, omission or misstatement. A party must rely upon its own inspection(s). Powered by www.focalagent.com

To view this property please contact Connells on

T 01234 345 303
E bedford@connells.co.uk

42 Allhallows
BEDFORD MK40 1LN

EPC Rating: B Council Tax
Band: F

Tenure: Freehold

view this property online connells.co.uk/Property/BED311361



1. MONEY LAUNDERING REGULATIONS Intending purchasers will be asked to produce identification documentation at a later stage and we would ask for your co-operation in order that there will be no delay in agreeing the sale. 2. These particulars do not constitute part or all of an offer or contract. 3. The measurements indicated are supplied for guidance only and as such must be considered incorrect. Potential buyers are advised to recheck measurements before committing to any expense. 4. We have not tested any apparatus, equipment, fixtures, fittings or services and it is in the buyers interest to check the working condition of any appliances.

Connells Residential is registered in England and Wales under company number 1489613, Registered Office is Cumbria House, 16-20 Hockliffe Street, Leighton Buzzard, Bedfordshire, LU7 1GN. VAT Registration Number is 500 2481 05.

See all our properties at www.connells.co.uk | www.rightmove.co.uk | www.zoopla.co.uk

Property Ref: BED311361 - 0005