

2 Myrtles Court, Pillmere

Guide Price £250,000

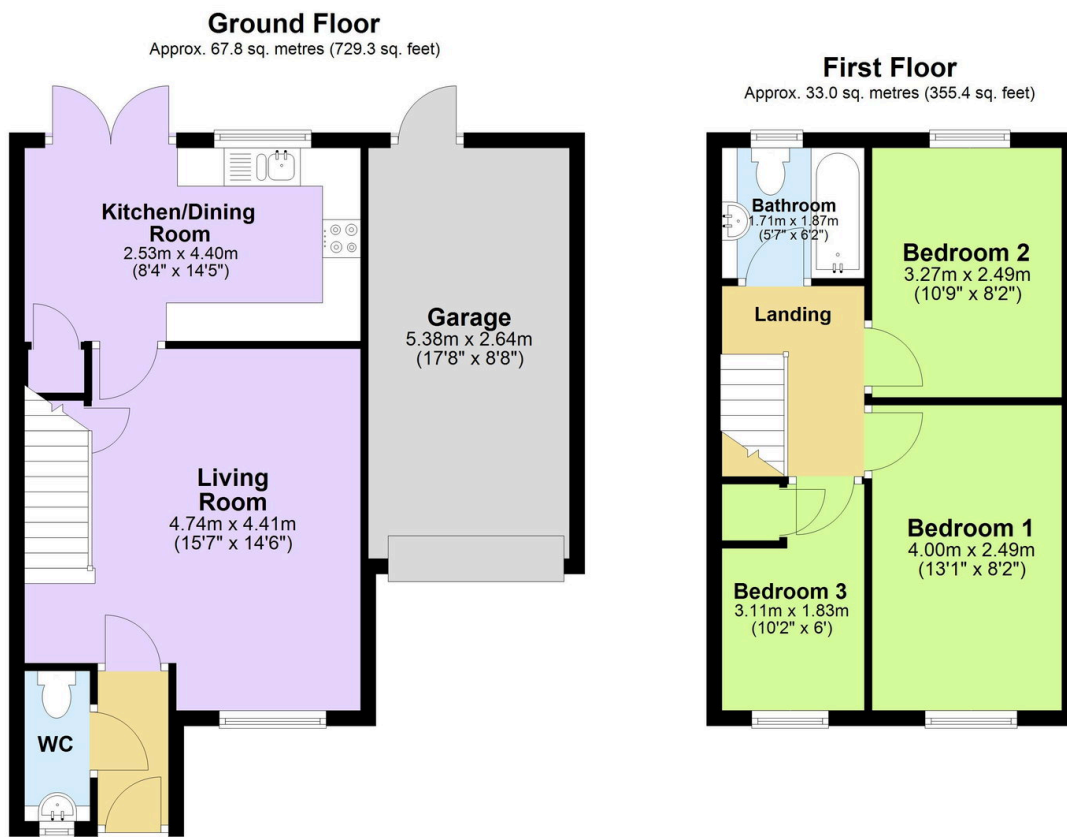
3 2 1



The property welcomes you with a spacious and inviting living room, perfect for both relaxing and entertaining. To the rear, a stylish and contemporary kitchen/diner provides an excellent social hub, complete with doors opening directly onto the private rear garden. Outside, you'll find a decked area ideal for alfresco dining, alongside a well-maintained lawn and convenient access into the garage. A practical downstairs WC completes the ground floor accommodation. Upstairs, the property boasts three well-proportioned bedrooms, all thoughtfully arranged, along with a modern family bathroom. Externally, the home benefits from driveway parking and an attached garage, adding to its overall convenience.

Key Features

- Freehold - Council Tax Band C - EPC C
- Three Well-Proportioned Bedrooms
- Modern Kitchen/Diner
- Private Rear Garden
- Located within Easy Reach of Shops, Parks, Schools & Transport Links
- Immaculately Presented Link-Detached Home
- Spacious Living Room
- Handy Downstairs WC
- Garage & Driveway Parking
- Quote BH0675 To Book Your Viewing



Total area: approx. 100.8 sq. metres (1084.6 sq. feet)