

## Clephane Road, N1

£525,000

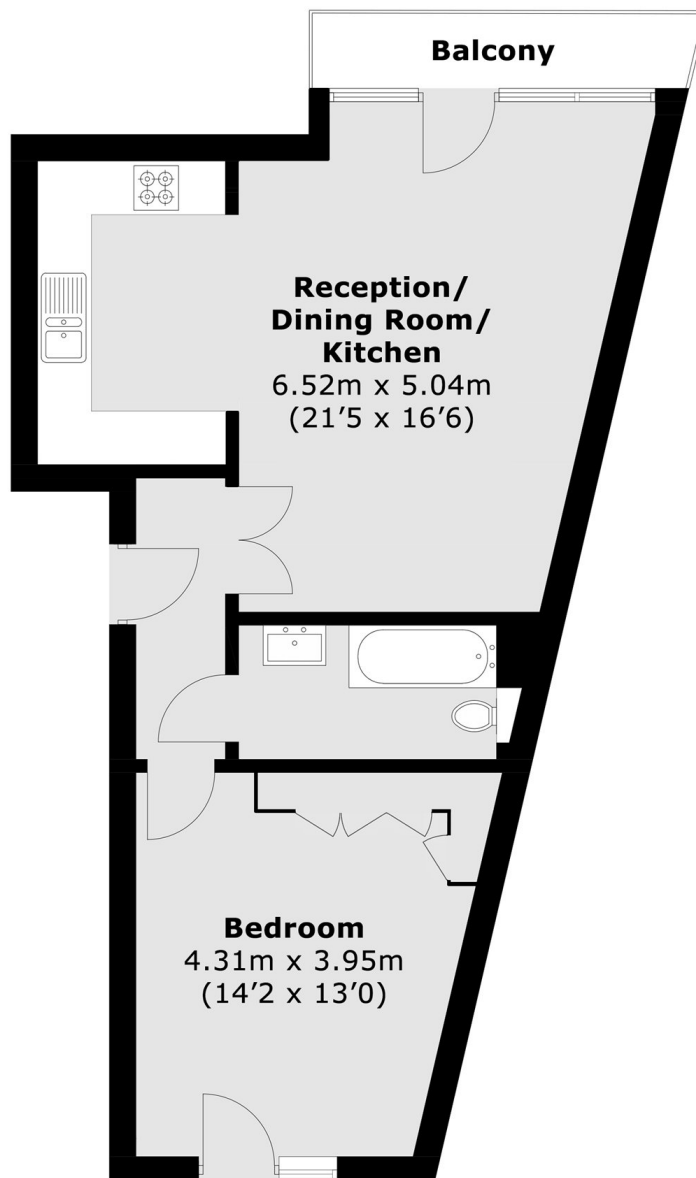
A one bedroom lateral apartment on the top floor of a small purpose built block. This lovely home has a south facing balcony, an open-plan kitchen reception room and a plethora of storage.

Clephane Road is only a few minutes from Essex Road station (National Rail) and Canonbury station (Overground) or a short bus ride to Highbury and Islington (overground and Victoria line) and Angel station (Northern line). Shops, cafes, pubs and restaurants that Upper Street and Essex Road have to offer are also only a short walk away.

### Features

- One Bedroom
- Top Floor
- Open-Plan
- South Facing Balcony
- Purpose Built
- Secure Bike Shed

# Clephane Road, London, N1



## Ground Floor

Total area (approx.): 48.8 sq. m (525.2 sq ft.)

Balcony area (approx): 4.8 sq. m (51.6 sq ft.)