

TO LET



Home Park Road, Wimbledon Park, SW19

£2,000.00 PCM

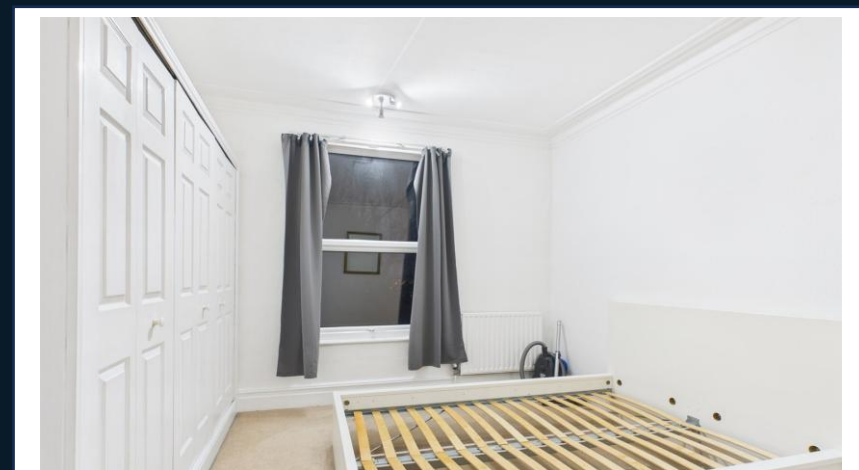


samuel estates
YOUR PROPERTY • OUR BUSINESS

Property Description

A great sized two-bedroom first floor flat located on the highly desirable and quiet Home Park Road, Wimbledon Park, SW19. The property comprises of a bright and spacious living room with ample space for dining, a separate kitchen, a large double bedroom, a single bedroom, a bathroom with shower over bath and a separate WC. Added benefits include a large private garden with side access.

The property is located a moments walk to Wimbledon Park Station (District Line) providing you with excellent transport links across London and to the City. The large open spaces of the popular Wimbledon Park is also close by. This property is perfect for a couple or a growing family in need of extra space and good transport links.



Disclaimer

Samuel Estates their clients and any joint agents give notice that they are not authorised to make or give any representation or warranties in relation to the property. No responsibility is assumed for any statement that may be made in these lettings particulars. These particulars do not form any part of any offer or contract and must not be relied upon as statements or representation of fact. Any distances, measurements or areas are approximate. The text, photographs and floorplans are for guidance only and not comprehensive in any way. Samuel Estates have not tested any services, appliances or facilities and prospective tenants must satisfy themselves by inspection.

Material Information

Date Available – 23/12/2025

Holding deposit amount – £460.00

Security Deposit amount (Five weeks rent) – £2,307.00

Council Tax Band – D

Local Authority – Merton Council



Property Type

Flat (First Floor)



Construction Type

Brick



Parking

Parking Permit



Listed Building Status

None



Water Supply

Thames Water



Electricity Supply

Mains



Heating

Gas / Electric
Communal / Mains



Broadband

XXXXXXXXXX



Mobile Signal

XXXXXXXXXX



Flood Risk

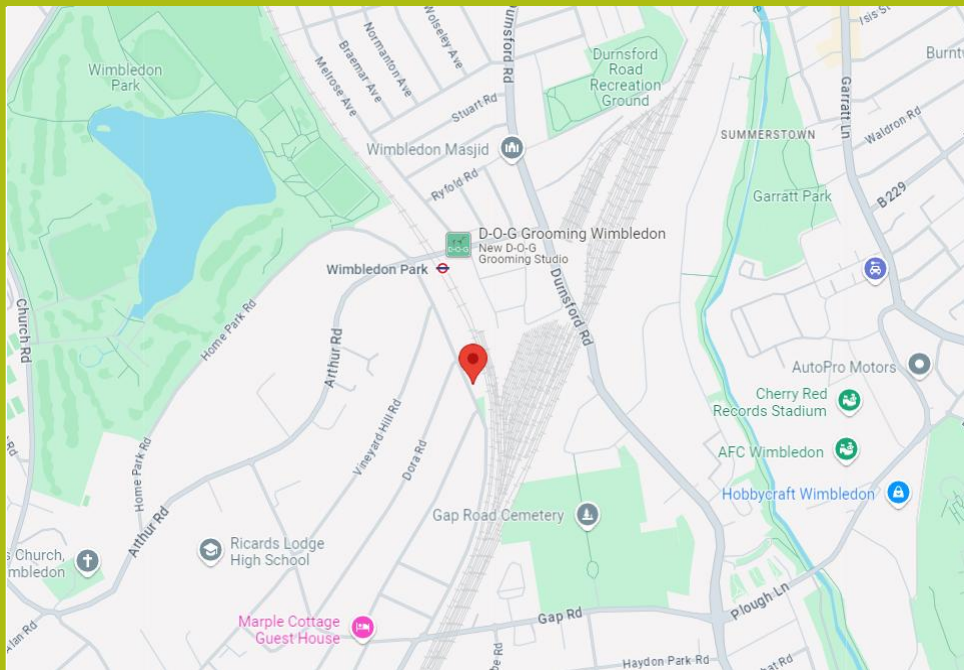
Has the property been flooded in the past five years: NO

Level of Risk: None



**Proposed Development
in Immediate Locality?**

None





Energy Efficiency Rating

	Current	Potential
Very energy efficient - lower running costs		
92-100 A		
81-91 B		
69-80 C		
55-68 D		
	50	58

Balham
45 Bedford Hill,
London, SW12 9EY
☎ 020 8673 4666

Colliers Wood & Wimbledon
30 Watermill Way,
London, SW19 2RT
☎ 020 8090 9000

Streatham
432/434 Streatham High Road
London, SW16 3PX
☎ 020 8679 9889

