



14 Drawbridge, The Bailey

City Road | Manchester | M15 4ZX

£1,300 PCM

The
GOOD
ESTATE
AGENCY

14 Drawbridge,

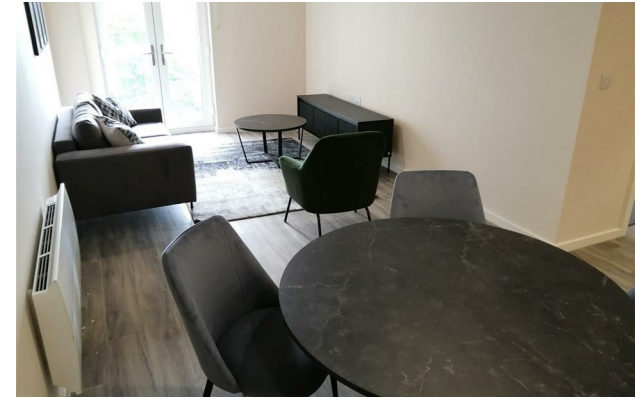
City Road |

Manchester | M15 4ZX

£1,300 PCM

2 BED, FURNISHED WITH PARKING. An excellent, spacious third floor two bedroom apartment in the newly completed Bailey development. The apartments are close to Deansgate and St. George's Park and have two of Manchester's major universities within a mile of the location. Comprises: entrance hall, storage cupboard, master bedroom, second double bedroom, bathroom with shower over bath, open plan living & dining room through to fitted kitchen and communal courtyard.

- TWO BEDROOM APARTMENT
- SPACIOUS OPEN PLAN LIVING & DINING ROOM
- ALLOCATED PARKING INCLUDED
- THIRD FLOOR
- FURNISHED
- FITTED KITCHEN
- EASY ACCESS TO THE CITY CENTRE



Energy Efficiency Rating		Current	Potential
<i>Very energy efficient - lower running costs</i>			
(92 plus) A			
(81-91) B			
(69-80) C			
(55-68) D		68	68
(39-54) E			
(21-38) F			
(1-20) G			
<i>Not energy efficient - higher running costs</i>			
England & Wales		EU Directive 2002/91/EC	

68 Quay Street
Manchester
M3 3EJ
0161 513 2034
hello@thegea.co.uk
www.thegea.co.uk