



## Rosary Gardens, SW7

£875 Per week

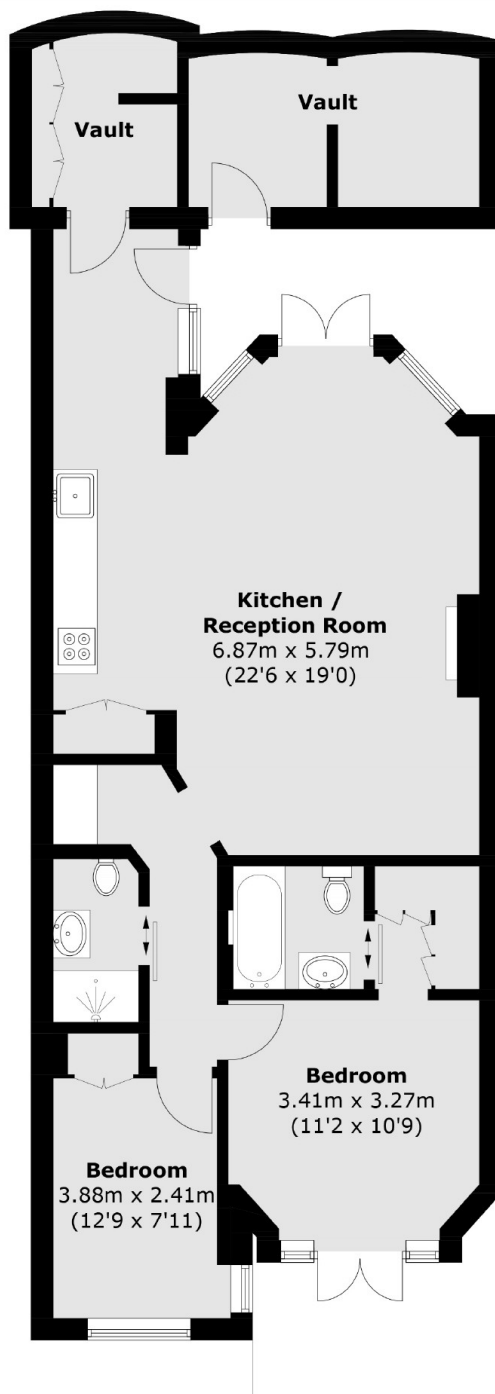
A recently refurbished two bedroom, two bathroom apartment available to let, set within a red-brick Victorian house. The property offers a spacious open-plan living area, ample storage, and modern finishes throughout.

Rosary Gardens is conveniently located a short distance from Gloucester Road, which offers a wide selection of cafés, shops, and restaurants, including a Waitrose supermarket, Boots chemist, Prêt coffee shop, and the Black & Blue steakhouse.

### Features

- Two Double Bedroom
- Two Bathrooms
- Excellent Location
- Newly Refurbished
- Modern Finishes
- Ample Storage

# Rosary Gardens, London, SW7



Total area (approx.): 87.2 sq. m (938.6 sq. ft)  
(Including Vaults)

## Dexters

South Kensington  
144 Old Brompton Road  
London  
SW7 4NR  
Lettings  
020 7244 7711

Energy Rating: D. We aim to make our particulars both accurate and reliable. However they are not guaranteed; nor do they form part of an offer or contract. If you require clarification on any points then please contact us, especially if you're traveling some distance to view. Please note that appliances and heating systems have not been tested and therefore no warranties can be given as to their good working order.

 **RICS** | Regulated  
Estate Agent  
and Letting Agent

[dexters.co.uk](http://dexters.co.uk)