

HJC

ESTATE AGENCY



Portsmouth Road

Thames Ditton, KT7 0SY

£1,375,000

Birchdale is a stunning arts and crafts home which has been cherished and lovingly-maintained to a high standard to reflect the period. Featuring an abundance of period touches such as original fireplaces in every room, cast iron radiators, high ceilings and monkey tails. This 6 bedroom detached family home offers in excess of 3000sqft over 3 floors and does not disappoint. The hub of the house is a large modern open plan kitchen/living space with French doors to a mature south east-facing 145ft garden. To front is a grand reception room with bay window, adjoining is a useful boot room/utility and WC. Upstairs there are 4 double bedrooms, one ensuite, a single fifth/study and a luxury contemporary family bathroom. The top floor is a huge versatile room spanning the depth of the house with accessible eaves storage and built-in double study area. Close to excellent schools and transport links.

Material Info: Brick Walls & Roof Tiles. Water / Electricity / Sewerage: Mains. Heating: Gas Mains. Broadband: Fibre (FTTC). Mobile Coverage: Indoor: Variable Outdoor: Likely.

- Arts and crafts period home
- 145ft SE-facing garden
- Abundance of storage
- Versatile top floor
- Many original features
- Off street parking
- Superb kitchen/dining/family room
- Close to excellent schools

Floor Plan

Portsmouth Road

Approximate Gross Internal Area = 279.4 sq m / 3007 sq ft
(Including Eaves)

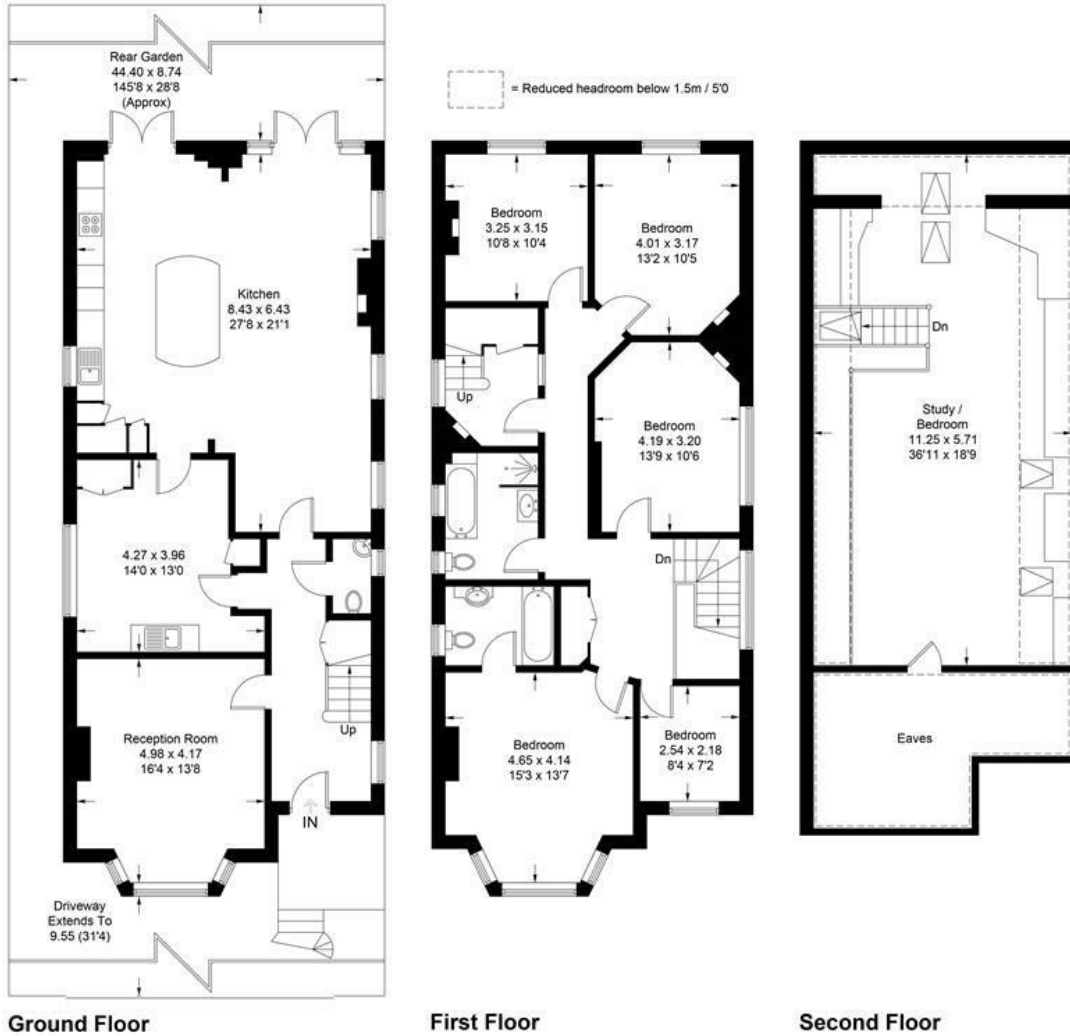
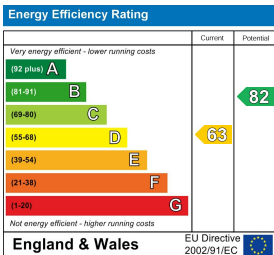


Illustration for identification purposes only, measurements are approximate, not to scale. Fourlabs.co © (ID1147663)

Energy Efficiency Graph



These particulars, whilst believed to be accurate are set out as a general outline only for guidance and do not constitute any part of an offer or contract. Intending purchasers should not rely on them as statements of representation of fact, but must satisfy themselves by inspection or otherwise as to their accuracy. No person in this firm's employment has the authority to make or give any representation or warranty in respect of the property.