



10 OYSTER COURT CLEETHORPES, DN35 8QE

£175,000
FREEHOLD

Modern two-bedroom detached home just a one-minute walk from Cleethorpes beach. Featuring a stylish kitchen with integrated appliances, downstairs W.C., courtyard garden, parking, and a contemporary family bathroom. Ideal as a holiday home, Airbnb investment, or first-time buy.



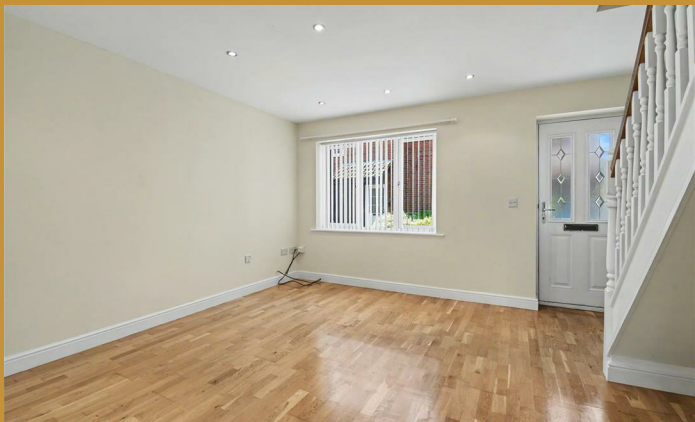
BILTONS

THE PERSONAL
AGENTS

WWW.BILTONS.CO.UK

01724 642002

10 OYSTER COURT



DESCRIPTION

A fantastic opportunity to acquire this modern two-bedroom detached home, ideally positioned just a one-minute walk from the main beach at Cleethorpes. Perfectly suited as a holiday home, Airbnb investment, or first-time purchase, this property offers stylish and low-maintenance living in a highly sought-after coastal location.

The ground floor features a contemporary fitted kitchen complete with integrated appliances including a washer dryer, microwave, oven, and fridge, alongside a convenient downstairs W.C. The bright and well-presented living space provides a comfortable setting for relaxing or entertaining.

Upstairs, the property offers two well-proportioned bedrooms and a modern family bathroom finished to a high standard.

Externally, there is a small courtyard garden, ideal for outdoor seating, along with the added benefit of off-street parking.

Combining modern convenience with an unbeatable location close to the seafront and local amenities, this property is not to be missed.

LOUNGE

Front facing with window to the front aspect, phased spotlights to the ceiling and area under the stairs perfect for extra furniture or storage

KITCHEN

With a range of units housing integrated appliances such as oven with ceramic hob & extractor, washer/dryer, fridge and microwave, a composite door leads to the rear courtyard and a door leads into the

DOWNSTAIRS W.C

with low flush W.C and hand basin and heated towel rail

FIRST FLOOR

with doors to all three upstairs rooms

BEDROOM ONE

double dual windows overlooking the front aspect and a door to a cupboard housing the hot water cylinder

FAMILY BATHROOM

With curved bath and side panel with shower over, low flush W.C, hand basin and heated towel rail a obscured glazed window adds light

BEDROOM TWO

With a small window to the rear and a larger side window

COURTYARD STYLE GARDEN & PARKING

leading from the parking area a dual use security gate leads into the courtyard with wooden garden shed

10 OYSTER COURT





10 OYSTER COURT

ADDITIONAL INFORMATION

Local Authority –

Council Tax – Band B

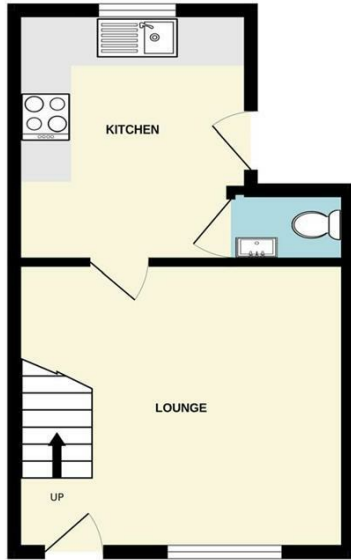
Viewings – By Appointment Only

Floor Area – sq ft

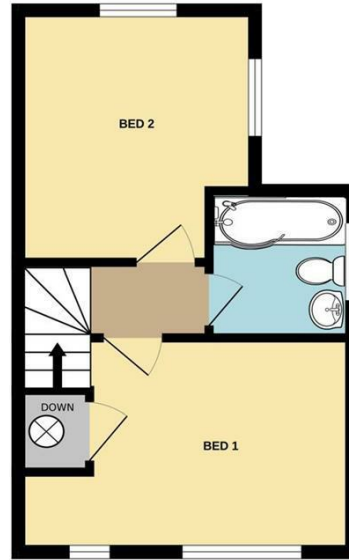
Tenure – Freehold



GROUND FLOOR

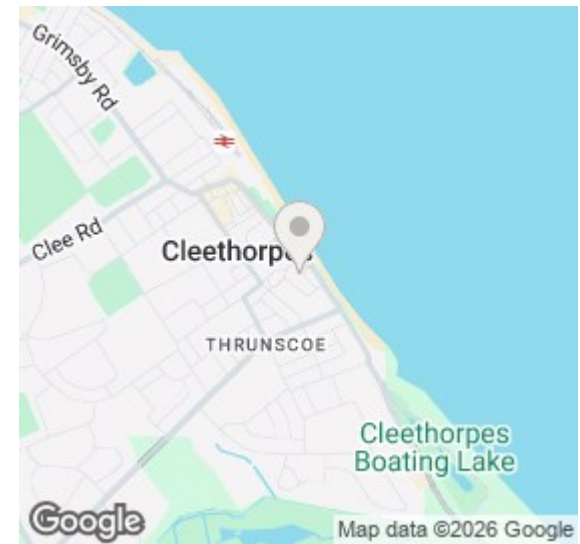


1ST FLOOR



10 OYSTER COURT, CLEETHORPES, DN35 8QE

Whilst every attempt has been made to ensure the accuracy of the floorplan contained here, measurements of doors, windows, rooms and any other items are approximate and no responsibility is taken for any error, omission or mis-statement. This plan is for illustrative purposes only and should be used as such by any prospective purchaser. The services, systems and appliances shown have not been tested and no guarantee as to their operability or efficiency can be given.
Made with Metropix ©2025



Energy Efficiency Rating		
	Current	Potential
Very energy efficient - lower running costs		
(92 plus) A		
(81-91) B		
(69-80) C		
(55-68) D		
(39-54) E		
(21-38) F		
(1-20) G		
Not energy efficient - higher running costs		
England & Wales	EU Directive 2002/91/EC	

Agents Note: Whilst every care has been taken to prepare these particulars, they are for guidance purposes only. All measurements are approximate and are for general guidance purposes only and whilst every care has been taken to ensure their accuracy, they should not be relied upon and potential buyers/tenants are advised to recheck the measurements

monique@biltons.co.uk

07808163324

<https://biltons.co.uk/>



BILTONS
THE PERSONAL
AGENTS

WWW.BILTONS.CO.UK

01724 642002