



## Great Western Road, W9

£325,000

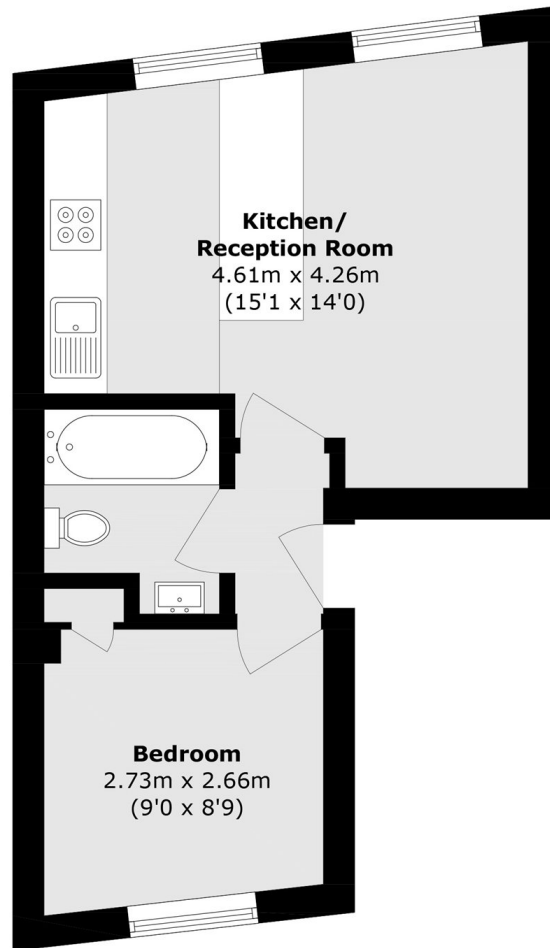
Set within a Victorian conversion, this first floor flat comes complete with a bedroom with built-in storage, open plan kitchen/reception, Juliet balcony and wooden flooring throughout.

Great Western Road is within walking distance of Westbourne Park underground station (Circle andammersmith & Smith lines), as well as being ideally located for the amenities offered along Harrow Road.

### Features

- First Floor Flat
- Juliet Balcony
- Open Plan Kitchen/Reception
- Built-In Storage
- Public Transport Links
- Chain Free

# Great Western Road, London, W9



## First Floor

Total area (approx.): 28.8 sq. m (310.0 sq. ft)