



1-BED APARTMENT

# FOREST COURT

WOODSIDE PARK N12

# 1-BED APARTMENT

## FOREST COURT

---

Step into a beautifully finished, ground-floor one-bedroom home where natural light, light oak flooring and clean-lined interiors create an immediate sense of calm. A striking glazed, black-framed partition smartly zones the living and sleeping areas, giving the flat an airy, loft-style feel. The sleek kitchen is elevated by marble-effect surfaces and integrated appliances, ideal for low-maintenance everyday living. A premium bathroom completes the offer with a walk-in shower, brass detailing and a warm wood vanity for a boutique-hotel finish.



# 1-BED APARTMENT

## FOREST COURT

HOLDEN AVENUE, WOODSIDE PARK

Light-filled one-bedroom apartment offering well-configured living space over approximately 517 sq ft (48.0 sq m). A generous reception area leads to a compact, well-appointed kitchen. A secluded bedroom sits adjacent to a modern bathroom, with practical storage throughout. The layout provides a clear separation between living and sleeping areas, while capturing efficient use of space in a contemporary, low-maintenance home.



1 BED



1 RECEPTION



1 BATH



EPC: D (62)



517 SQFT



C.TAX: C (£1,809 pa)

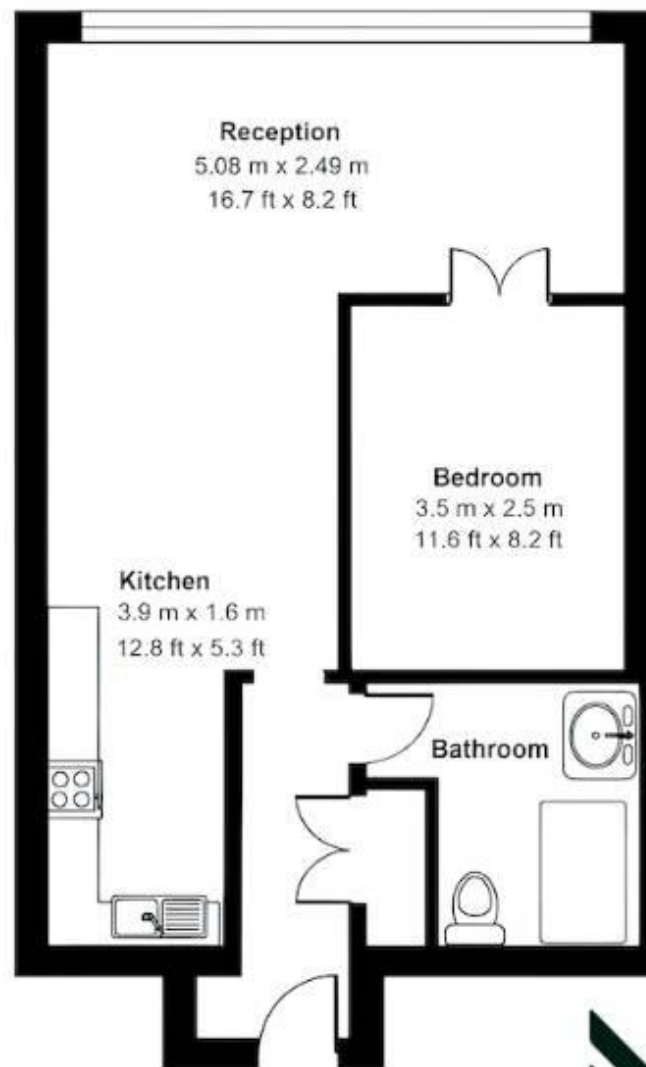
RENTAL PRICE

£1,799 pcm  
£415 pw

# FLOORPLAN



APPROXIMATE GROSS INTERNAL FLOOR AREA: 517 SQ FT (48.0 SQ M)



**Reception**  
5.08 m x 2.49 m  
16.7 ft x 8.2 ft

**Bedroom**  
3.5 m x 2.5 m  
11.6 ft x 8.2 ft

**Kitchen**  
3.9 m x 1.6 m  
12.8 ft x 5.3 ft

**Bathroom**





# LIVING ROOM

---

Bright, contemporary living room on the ground floor with light timber flooring and large windows that bathe the space in natural light. A glazed partition with black framing separates the sleeping area, creating an airy, defined feel. A minimalist seating area with a round table provides a cozy dining space. Neutral walls and stylish pendant lights enhance the sense of space and calm.

## SPECIFICATIONS

- Ground-floor flat with easy access.
- Wide windows flood the living area with light.
- Glass-panel partition separates the sleeping area.
- Light oak flooring enhances the modern feel.
- Compact dining for two.
- Neutral decor and pendant lighting add brightness.



# KITCHEN

---

A stylish, compact L-shaped kitchen in a contemporary flat, finished in white with brass handles. Marble-effect worktops and splash-backs create a luxurious, easy-clean backdrop. The space houses integrated appliances, including an electric hob, oven, dishwasher and a microwave in a tall unit. A brass-toned mixer tap sits above a sink, complemented by ample storage across base and wall units.

## SPECIFICATIONS

- White, brass-handled cabinetry for a streamlined look.
- Marble-effect worktops and splashbacks add luxe appeal.
- Integrated appliances include electric hob, oven, microwave & dishwasher.
- Brass-toned sink tap adds a warm detail.
- Ample storage with upper and lower cabinets.
- Easy-clean, durable surfaces





# MASTER BEDROOM

---

A stylish, compact master bedroom with a sage-green upholstered headboard wall. Warm pendant lighting creates a welcoming glow over a clean, neutral space. Glass-panel doors separate a private sleeping zone from the rest of the home. Open shelving provides practical storage while maintaining a contemporary, airy feel.

## SPECIFICATIONS

- Green upholstered headboard wall creates a soft focal point.
- Pendant lighting adds contemporary warmth above the bed.
- Glass-panel doors provide private sleeping space.
- Open shelving offers stylish storage on the right.
- Light timber floors enhance the bright, airy feel.





# FAMILY BATHROOM

---

Luxurious contemporary bathroom finished in marble-effect tiles and brass fixtures. The walk-in shower features a frameless glass enclosure and built-in niche with subtle lighting. A sleek white basin sits atop a warm wood vanity, paired with a statement brass tap. A wall-hung toilet with a concealed cistern completes the minimalist, space-saving design. The overall finish is bright, with soft ambient lighting and clean, premium detailing.

## SPECIFICATIONS

- Walk-in shower with frameless glass enclosure.
- Marble-effect tiling throughout for luxury.
- Brass fixtures add warm, contemporary detail.
- Wall-hung toilet with concealed cistern.
- Wooden vanity provides storage and character.
- Large circular mirror with back lighting.

# ABOUT NH PROPERTIES

---

At NH Properties, we understand the importance of finding a home that matches your lifestyle and expectations. With extensive experience in the **North West London** and **Canary Wharf** markets, We specialise in curating exceptional properties for discerning tenants. Our team is dedicated to delivering a seamless, **high-quality experience**, ensuring every detail is managed with care and professionalism. We are committed to excellence and our expertise ensures properties are presented to the highest standard, attracting premium tenants and optimising income for clients.

## NICHOLAS HART

FOUNDER

- 📞 0203 602 2525
- ✉ [info@nh-properties.co.uk](mailto:info@nh-properties.co.uk)
- 🌐 [nh-properties.co.uk](http://nh-properties.co.uk)
- 📍 Hillview House, 1 Hallswelle  
Parade, London NW11 0DL

CALL US TODAY!



PROPERTIES



# NICHOLAS HART

NH PROPERTIES

---

0203 602 2525

[info@nh-properties.co.uk](mailto:info@nh-properties.co.uk)

[nh-properties.co.uk](http://nh-properties.co.uk)

