



Connells

Station Close
Henlow



Property Description

Situated in the popular village of Henlow, this beautifully presented three bedroom semi-detached home offers spacious and well appointed accommodation, making it an ideal purchase for families, first-time buyers or those looking to upsize.

The property welcomes you via an entrance porch, leading into a generous front-facing lounge that provides a bright and inviting space for relaxation. To the rear of the property is a well proportioned kitchen diner, perfect for both everyday family life and entertaining. This flows seamlessly into a conservatory, which enjoys attractive views over the stunning rear garden. A convenient ground floor WC completes the accommodation on this level.

The first floor offers two spacious double bedrooms, a single bedroom and a contemporary family bathroom.

Externally, the property continues to impress with a beautifully landscaped rear garden featuring a generous patio area, lawn and an array of mature shrubs. Further benefits include a driveway providing off-road parking, garage, EV charger, and fibre to premises (Ultrafast broadband).

Ground Floor

Entrance Lobby

Door to front.

Cloakroom

Double glazed window to front aspect, wash hand basin and WC.

Lounge

Double glazed window to front aspect, TV and telephone points, wood effect flooring and radiator. Stairs leading to first floor.

Kitchen Diner

Fully fitted kitchen with a range of wall and base units, work surfaces with tiled splashback, sink and drainer, electric oven, gas hob with cooker hood over, plumbing for washing machine and dishwasher, space for fridge/freezer. Door leading to Conservatory.

Conservatory

Double glazed windows to rear and side aspect and French doors leading to rear garden.

First Floor

Landing

Stairs from Lounge. Overstairs storage cupboard.

Bedroom One

Double glazed window to front aspect and radiator.

Bedroom Two

Double glazed window to rear aspect and radiator.

Bedroom Three

Double glazed window to front aspect, upstairs storage cupboard and radiator.

Bathroom

Double glazed window to rear aspect, wash hand basin, bath with handheld shower and WC.

Outside

Rear Garden

A good size rear garden, mostly laid to lawn with mature borders, patio to rear side and side access.

Garage

Garage with up and over door, power and lighting.

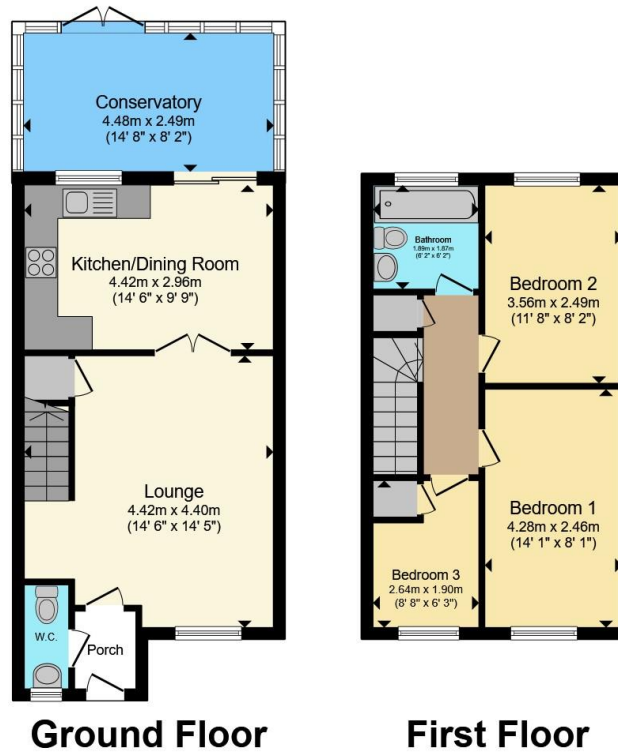
Parking

Dropped kerb parking with space for two cars.









Total floor area 83.4 m² (898 sq.ft.) approx

This floor plan is for illustrative purposes only. It is not drawn to scale. Any measurements, floor areas (including any total floor area), openings and orientation are approximate. No details are guaranteed, they cannot be relied upon for any purpose and they do not form part of any agreement. No liability is taken for any error, omission or misstatement. A party must rely upon its own inspection(s). Powered by www.propertybox.io



To view this property please contact Connells on

T 01462 437 666
E hitchin@connells.co.uk

14 High Street
 HITCHIN SG5 1AT

EPC Rating: Council Tax
 Awaited Band: D

Tenure: Freehold

view this property online connells.co.uk/Property/HIT308687



1. MONEY LAUNDERING REGULATIONS Intending purchasers will be asked to produce identification documentation at a later stage and we would ask for your co-operation in order that there will be no delay in agreeing the sale. 2. These particulars do not constitute part or all of an offer or contract. 3. The measurements indicated are supplied for guidance only and as such must be considered incorrect. Potential buyers are advised to recheck measurements before committing to any expense. 4. We have not tested any apparatus, equipment, fixtures, fittings or services and it is in the buyers interest to check the working condition of any appliances.

Connells Residential is registered in England and Wales under company number 1489613, Registered Office is Cumbria House, 16-20 Hockliffe Street, Leighton Buzzard, Bedfordshire, LU7 1GN. VAT Registration Number is 500 2481 05.

See all our properties at www.connells.co.uk | www.rightmove.co.uk | www.zoopla.co.uk

Property Ref: HIT308687 - 0003