

SW19

it's all in the postcode...



Palestine Grove

£600,000

- Two bedroom House
- Good condition
- Sought after location
- Private garden
- Freehold
- Council tax Band C
- EPC Rating C



020 8544 2828

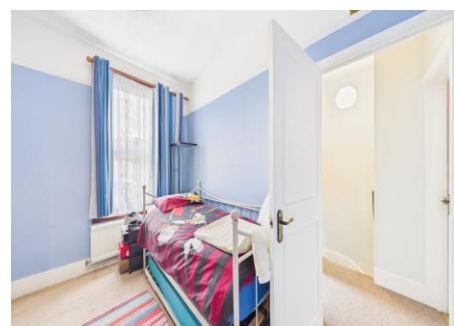
Wimbledon: Wimbledon Park: Colliers Wood

www.SW19.com

SW19 Estate Agents Ltd. Is registered in England & Wales No. 05508737

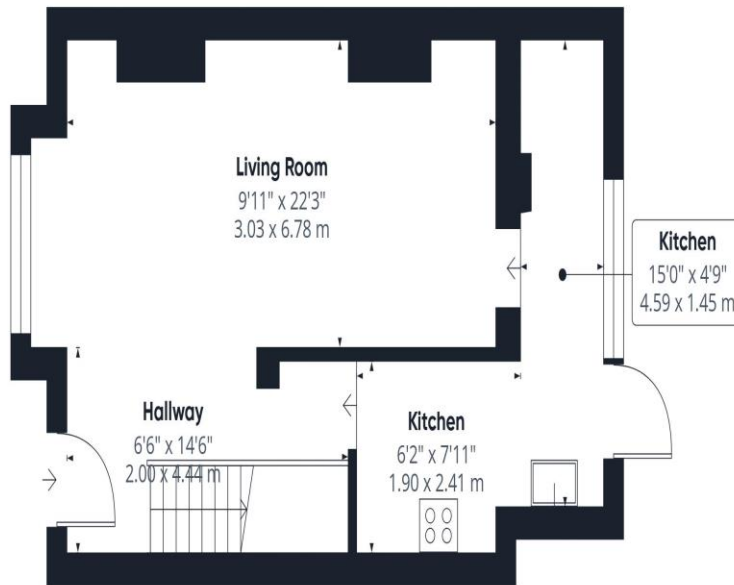
it's all in the postcode...

A lovely two-bedroom terraced house set in a sought-after location, just a short distance from Colliers Wood High Street and the Northern Line Underground station. This attractive home offers spacious living accommodation, a private garden, and excellent potential to extend (subject to planning permission). An ideal purchase for buyers seeking a well-located and versatile home in the area.

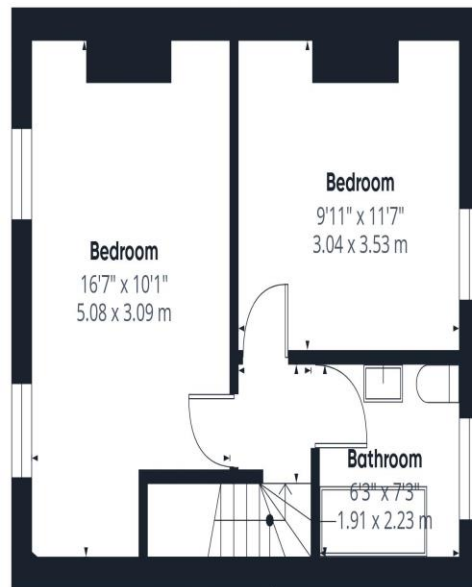


020 8544 2828
Wimbledon: Wimbledon Park: Colliers Wood
www.SW19.com
SW19 Estate Agents Ltd. Is registered in England & Wales No. 05508737

'it's all in the postcode...'



Floor 0



Floor 1



GLA⁽¹⁾

884.65 ft²

82.19 m²

Total

884.65 ft²

82.19 m²

(1) Finished, above grade

Ext. wall thickness assumed: 6 in/15.24 cm

Calculations reference the ANSI-Z765 standard. Measurements are approximate and not to scale. This floor plan is intended for illustration only.

GIRAFFE360

These particulars are for guidance only and should not be relied upon as a statement or representation of fact. All measurements given are approximate only and should not be relied upon for ordering carpets, equipment etc. Purchasers should satisfy themselves by inspection or otherwise as to the accuracy of the statements contained within. Neither SW19 estate agents ltd or related companies or their employees can confirm structural conditions of the property or that any appliances or other facilities are in working order. Purchasers are strongly recommended to arrange their own survey.

020 8544 2828

Wimbledon: Wimbledon Park: Colliers Wood

www.SW19.com

SW19 Estate Agents Ltd. Is registered in England & Wales No. 05508737

'it's all in the postcode...'