



40 Salisbury Street, Kirkcaldy - KY2 5HN

Kirkcaldy

Offers Over £99,995





40 Salisbury Street

Kirkcaldy, Kirkcaldy

Spacious ground floor apartment with front and rear gardens, main door access, two double bedrooms, modern kitchen and bathroom. Close to amenities and train station. Home Report £110,000.

Council Tax band: B

Tenure: Freehold

EPC Energy Efficiency Rating: E

EPC Environmental Impact Rating: D

- BRIGHT TRADITIONAL MAIN DOOR GROUND FLOOR FLAT
- TWO DOUBLE BEDROOMS
- FRONT & REAR GARDENS
- DG- GCH - EPC E - HOME REPROT £110,000
- SPACIOUS LOUNGE
- MODERN FITTED KITCHEN
- MODERN BATHROOM
- PERFECT STARTER HOME
- VIEW NOW!



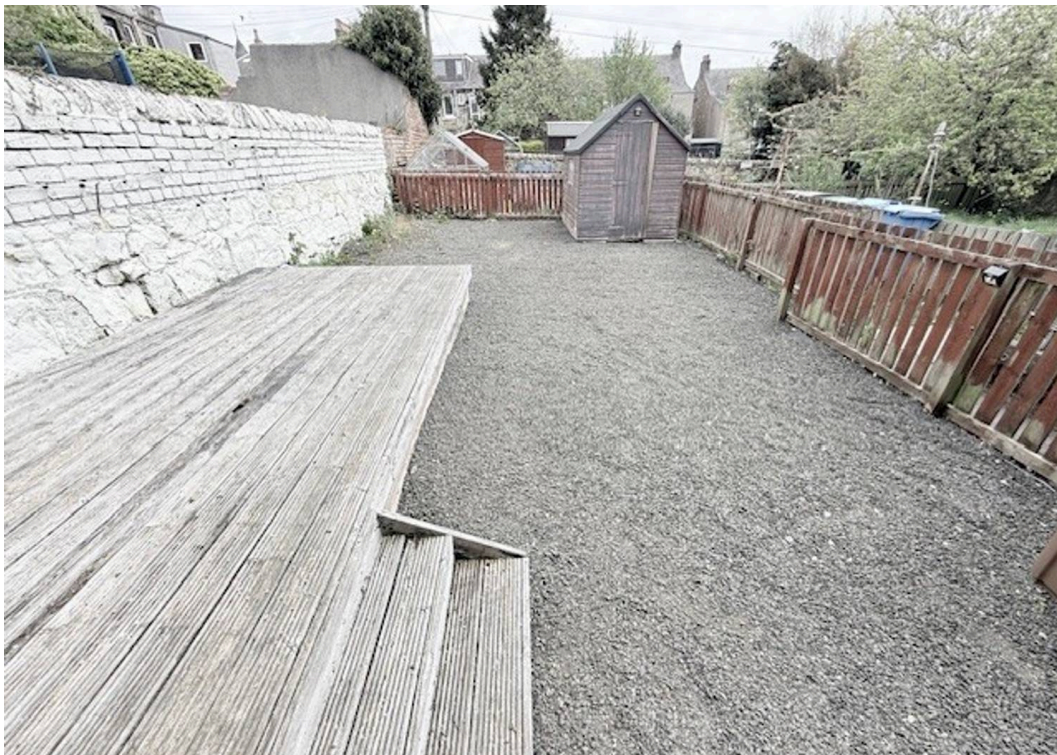
home sweet home
estate agents
your local property experts



GARDEN

FRONT & REAR





Energy Efficiency Rating		
	Current	Potential
<i>Very energy efficient - lower running costs</i>		
(92+) A		
(81-91) B		
(69-80) C		
(55-68) D		65
(39-54) E	46	
(21-38) F		
(1-20) G		
<i>Not energy efficient - higher running costs</i>		
England, Scotland & Wales EU Directive 2002/91/EC 		

Environmental Impact (CO ₂) Rating		
	Current	Potential
<i>Very environmentally friendly - lower CO₂ emissions</i>		
(92+) A		
(81-91) B		
(69-80) C		80
(55-68) D	68	
(39-54) E		
(21-38) F		
(1-20) G		
<i>Not environmentally friendly - higher CO₂ emissions</i>		
England, Scotland & Wales EU Directive 2002/91/EC 		

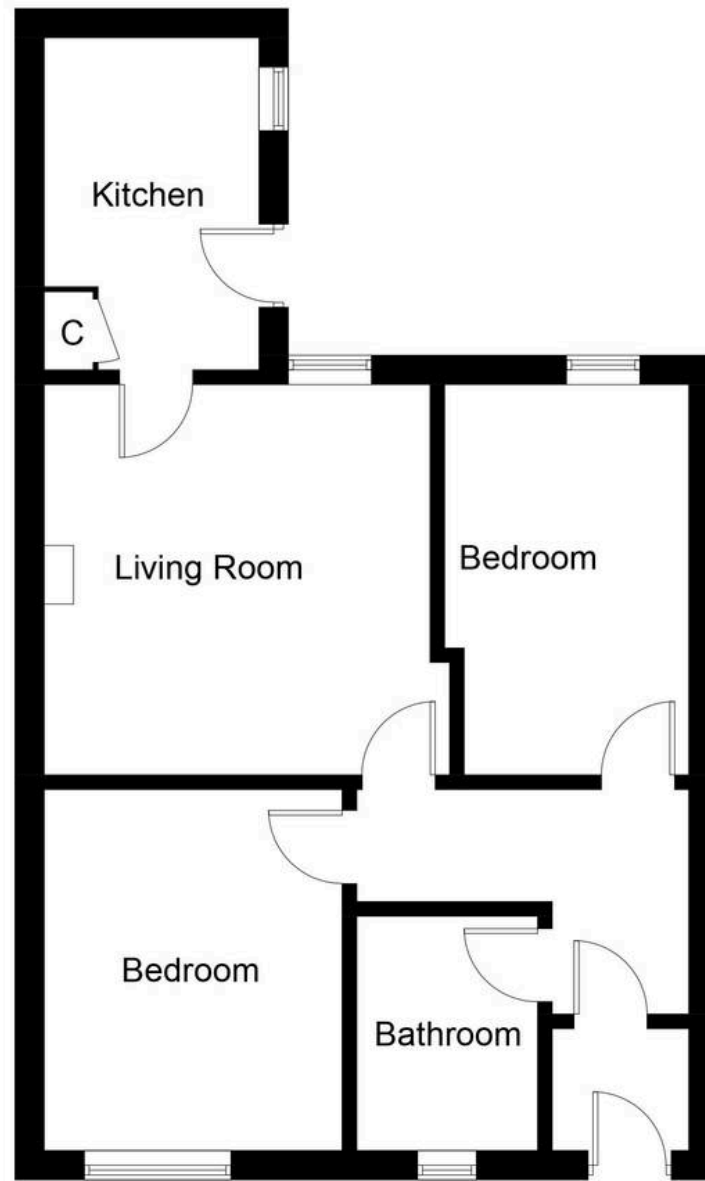


Illustration for identification purposes only, measurements are approximate, not to scale. Fourlabs.co © (ID1297674)



home sweet home
estate agents
your local property experts