



## COLLINGTREE ROAD, SE26

£400,000

Two double bedrooms

19' x 15' Lounge

Huge 939 Sq Ft

New roof

125 year lease

Energy rating: C

@marshandparsons  
marshandparsons.co.uk

MARSH &  
PARSONS



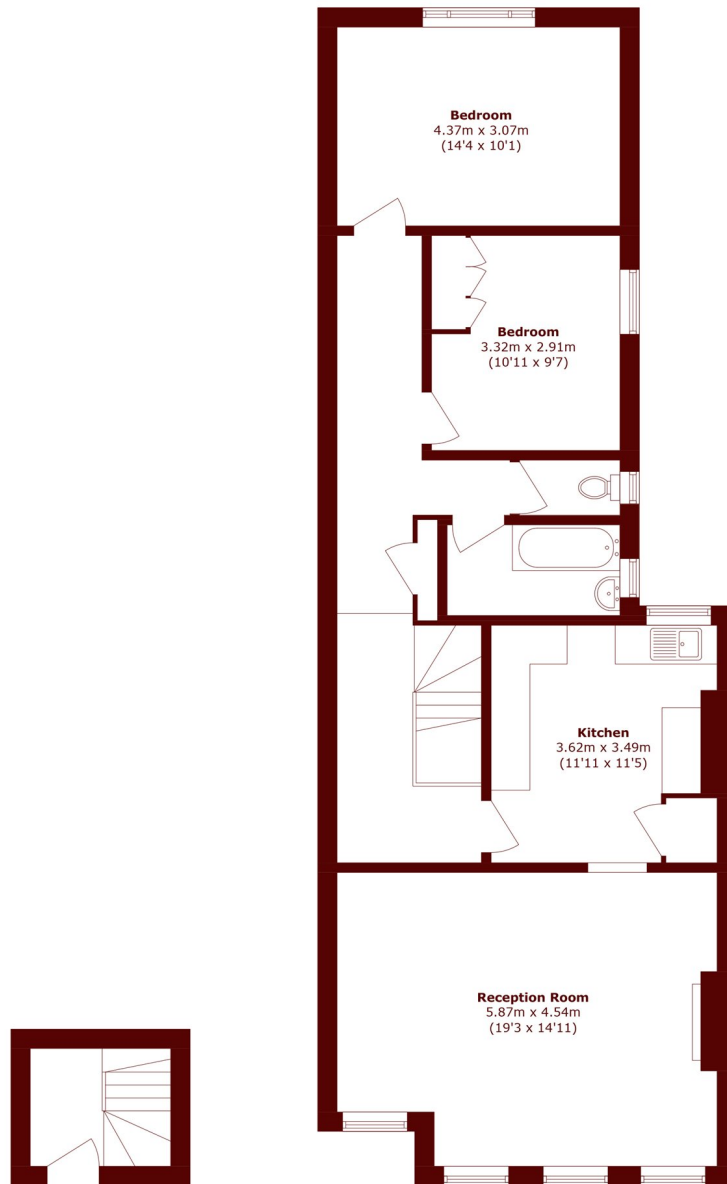
# ABOUT THE PROPERTY

This great size two double bedroom first floor apartment is found in Upper Sydenham and measures in at almost 1000 Sq Ft. The property benefits from a recent new roof and is offered chain free with a new lease. The huge 19' lounge stretches across the whole of the front with four large sash windows. There are lovely high ceilings and a tremendous feeling of light and space.

Collingtree Road is in popular residential location, found close to the high street and Overground station.



# STEP INSIDE COLLINGTREE ROAD



**Ground Floor**

**First Floor**

Total area (approx.): 92.1 sq. m (991.3 sq. ft)

**Brockley**  
020 8629 8164

Energy Rating: C We aim to make our particulars both accurate and reliable. However, they are not guaranteed; nor do they form part of an offer or contract. If you require clarification on any points then please contact us, especially if you're traveling some distance to view. Please note that appliances and heating systems have not been tested and therefore no warranties can be given as to their good working order

**MARSH &  
PARSONS**