



## HARDY ROAD, SW19

£995,000

Victorian terrace house  
Three double bedrooms  
Two bathrooms  
Residential road  
Battles area of Wimbledon  
Energy rating: c

@marshandparsons  
marshandparsons.co.uk

MARSH &  
PARSONS



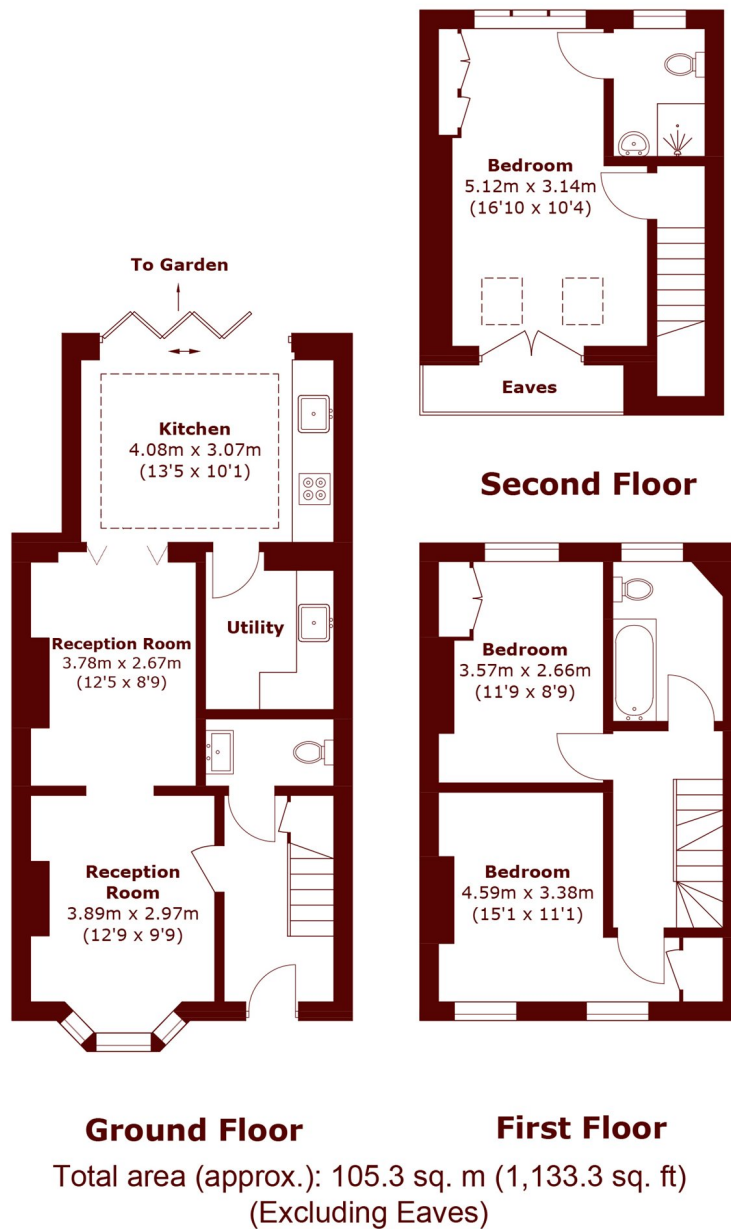
# ABOUT THE PROPERTY

A well presented Victorian terrace family home located in the highly sought after Battles area of Wimbledon. The ground floor offers a double reception room with a period fireplace, an extended kitchen opening onto a generous size garden, a utility room and a guest W/C. There are two bedrooms and a family bathroom on the first floor with a further double bedroom and en suite shower room on the upper floor.

Hardy Road is a residential road located a short distance to the amenities of Wimbledon Central shopping district, with both Haydons Road recreation ground and South Park Gardens with South Wimbledon Northern Line station on your doorstep.



# STEP INSIDE HARDY ROAD



Wimbledon  
020 8879 6660

Energy Rating: C We aim to make our particulars both accurate and reliable. However, they are not guaranteed; nor do they form part of an offer or contract. If you require clarification on any points then please contact us, especially if you're traveling some distance to view. Please note that appliances and heating systems have not been tested and therefore no warranties can be given as to their good working order

MARSH &  
PARSONS