



2 Garland Road
Weldon, NN17 3NE



Simpson West

This well presented three bedroom detached home is conveniently located within the popular Weldon Park development and is being sold with NO ONWARD CHAIN. Enjoying a pleasant position within walking distance to local schools, shops, and other amenities. The ground floor features an entrance hall, cloakroom/WC, utility room, a spacious living room, and a large modern kitchen/dining room with doors leading to the rear garden. Upstairs, there are three generously sized bedrooms, including a principal bedroom with an en-suite shower room, along with a main family bathroom servicing the remaining two bedrooms. The rear garden has been thoughtfully landscaped to include a patio, a large lawned area and low maintenance decking area, partially enclosed by a wall for added privacy. Additional benefits include a single detached garage and off road parking for 2 vehicles. Early viewing is highly recommended.

Energy Rating: B

Council Tax Band: C

£270,000



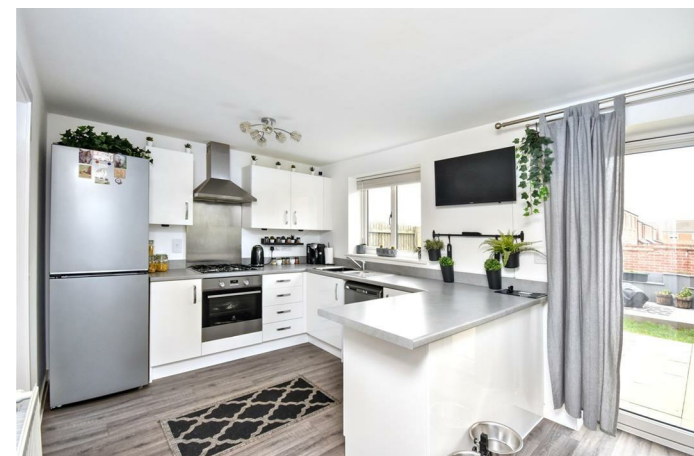
3



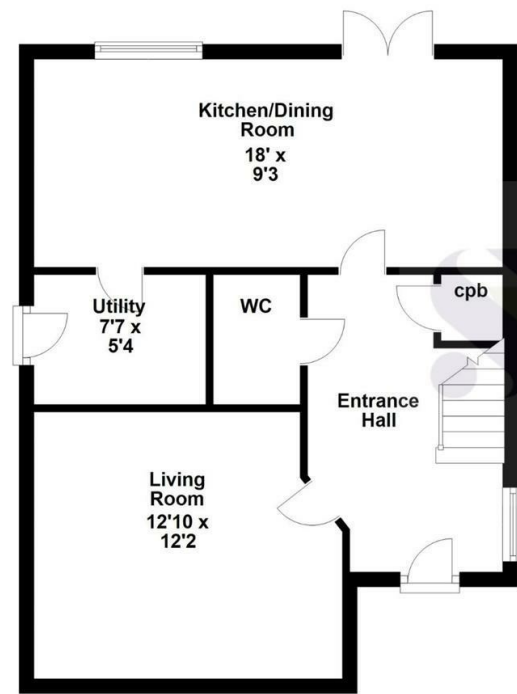
2



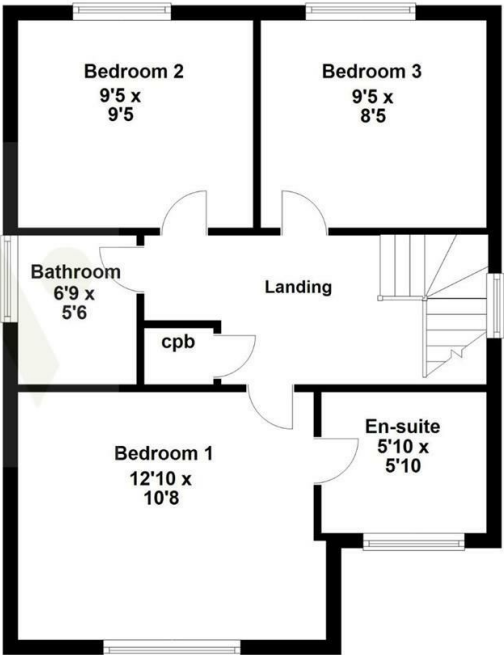
1



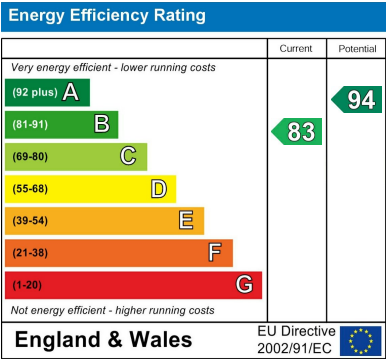
Ground Floor



First Floor



Floor plan not to scale - for guidance purposes only.
Floor plan created by Simpson West for their use.
Plan produced using PlanUp.



When you buy with Simpson West, you know **you'll be in safe hands**. From the moment you walk through our doors, we'll make you **feel truly welcome**. Our sales consultants and financial advisors will take you through **every step of the process**, offering **free expert advice** along the way, from help choosing the right mortgage and insurance through to finding your conveyancer. And if you need help selling your home too, **with over 20 years of local experience, you can trust us to get you moving**.



**Simpson
West**

Making Every
Journey Personal



01536 202007

info@simpsonwest.co.uk

<https://www.simpsonwest.co.uk/>

64 Corporation Street, Corby, Northants, NN17 1NH