



HART 22

# Plot 5 Hyndford Park

Lanark

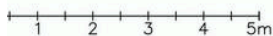


Hyndford Park is a beautiful rural development of just 19 homes on the outskirts of Lanark, nestled in the South Lanarkshire countryside. With a selection 3,4 and 5 bed detached bungalows and villas there will be a style to suit all tastes. These charming family homes will utilise the very latest technology to make these homes energy efficient and early reservations will allow for buyers to select their own fixtures and fittings, providing the opportunity to really stamp their own style on the home. Phase 2 is now being launched and comprises of three bungalows and three villas. Plot 5 is a five bedroom, detached villa of approximately 190m<sup>2</sup>. The accommodation comprises; on the ground floor, entrance vestibule, hallway, living room and large kitchen with open plan dining space at the rear. Off the kitchen is separate utility room which gives access to side of the property. The ground floor is completed by a fifth double bedroom and cloaks W.C. On the first floor there is a large family bathroom and four double bedrooms with two en-suite shower rooms. This floor is completed by a study which could offer potential as a sixth bedroom. Externally there are gardens to the front and rear with a driveway to the side which gives access to the single garage at the rear.

- Detached Villa
- Five Bedrooms
- Single Garage
- Front And Rear Gardens
- Beautiful Rural Development



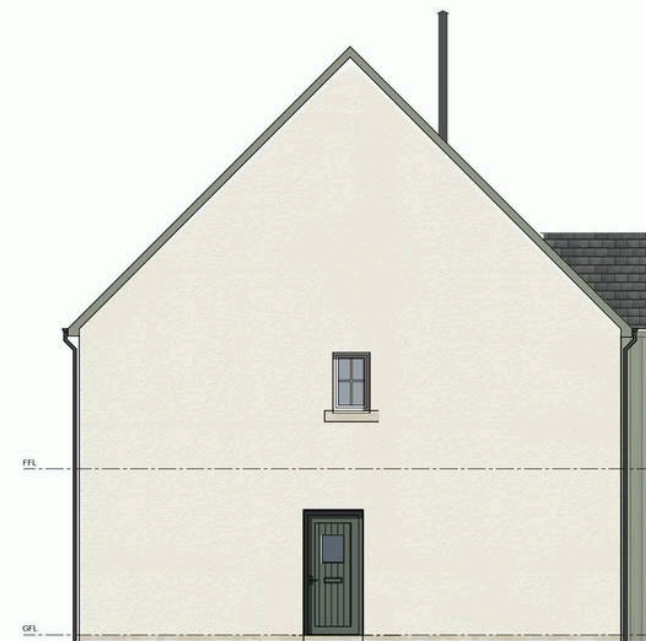
FRONT ELEVATION



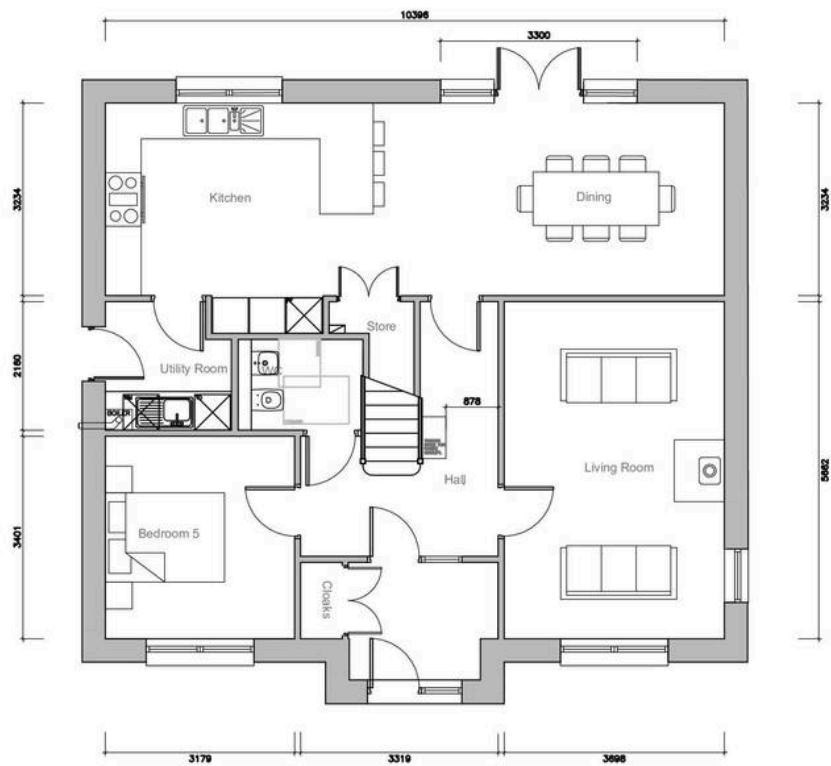
RIGHT SIDE ELEVATION



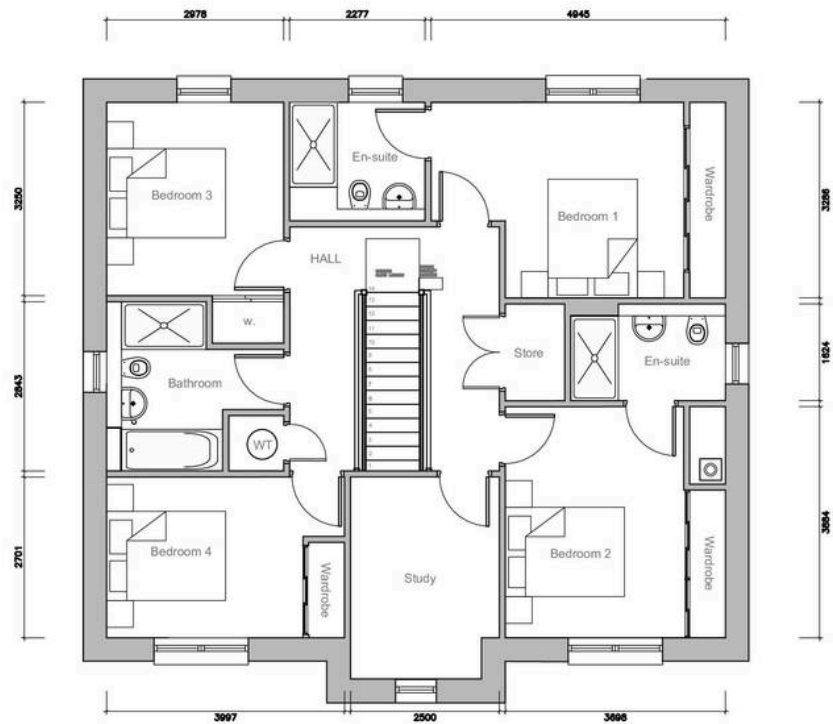
REAR ELEVATION



LEFT SIDE ELEVATION

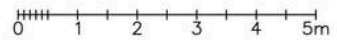


GROUND FLOOR PLAN



FIRST FLOOR PLAN

HOUSE TYPE 4 - GIA 2045 sq ft / 190m<sup>2</sup>  
 DETACHED / 5 BEDROOM / DETACHED GARAGE





# REMAX Clydesdale

Remax, 2 High Street - ML11 7EX

01555 666990

lanark@remax-scotland.homes

[www.remax-scotland.homes/estate-agents/clydesdale](http://www.remax-scotland.homes/estate-agents/clydesdale)

These particulars are prepared by us on the basis of information provided by our clients. We have not tested the electrical system, appliances or heating system. All sizes are recorded by laser to give an indicative, approximate size only. Prospective purchasers should make their own enquiries, no warranty is given or implied. This schedule is not intended to, and does not form any contract. Anti-Money Laundering Regulations - Purchasers will be asked to produce identification documentation at a later stage and we would ask for your co-operation in order that there will be no delay in agreeing the sale. NOTING INTEREST If you are interested in this property please ask your solicitor to notify us. This is referred to as "noting interest" and will ensure that you are informed of any