

Road Map



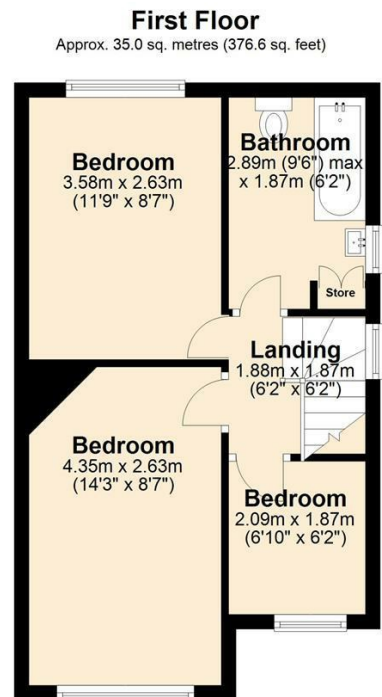
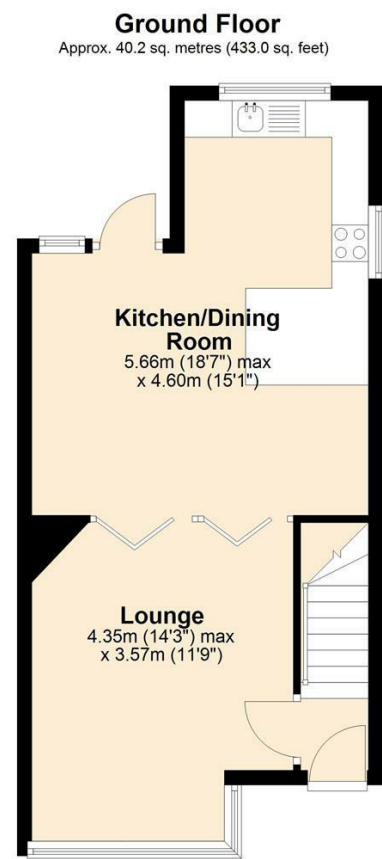
Hybrid Map



Terrain Map



Floor Plan



15 Wharton Avenue
, Thornton-Cleveleys, FY5 4DQ

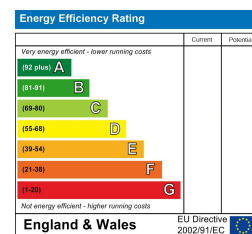
Offers In The Region Of £145,000

Viewings

Please contact our iMove Sales & Lettings Office on 01253 883311 if you wish to arrange a viewing appointment for this property or require further information.

These particulars, whilst believed to be accurate are set out as a general outline only for guidance and do not constitute any part of an offer or contract. Intending purchasers should not rely on them as statements of representation of fact, but must satisfy themselves by inspection or otherwise as to their accuracy. No person in this firm's employment has the authority to make or give any representation or warranty in respect of the property.

Energy Efficiency Graph



Make your next move with... imove

Call us now on 01253 883311
hello@imove.today.co.uk



15 Wharton Avenue

, Thornton-Cleveleys, FY5 4DQ

Offers In The Region Of £145,000



Hallway

Door leading from front garden into property. Staircase to front leading to first floor landing. Internal door leading into lounge.

Lounge

14'3" x 11'8"
UPVC double glazed bay window to front. Carpet, ceiling light and radiator. Through access to kitchen.

Open Plan Kitchen/Diner

18'6" x 15'1" (at widest point)
UPVC double glazed window to rear and side. UPVC door to rear providing access to rear garden patio. Range of wall and base units with worktop above. Stainless steel sink unit with mixer tap above, free standing gas cooker. Plumbed for washing machine. Wood effect laminate flooring, ceiling light and radiator. Under stairs storage cupboard.

First Floor Landing

Access to all first floor rooms. Loft access. Carpet and ceiling lights.

Bedroom One

14'3" x 8'7"
UPVC double glazed window to front. Carpet, ceiling light and radiator.

Bedroom Two

11'8" x 8'7"
UPVC double glazed window to rear Carpet, ceiling light and radiator.

Bedroom Three

6'10" x 6'1"
UPVC double glazed window to front. Carpet, ceiling light and radiator.

Bathroom

9'5" x 6'1"
UPVC double glazed opaque window to side. Three piece bathroom suite comprising; panel bath with shower above, pedestal wash hand basin and low flush WC. Plastic cladding splash back to walls and wet room flooring. Airing cupboard.

Front Exterior

Walled front garden with gated pathway.

Rear Exterior

Large rear garden with paved patio and an central lawn.
Large garden shed storage room and private seating area to rear.

Further Information

Tenure - Leasehold
999 years from 1934
EPC Rating D
Council Tax Band - A - Wyre Borough Council

