



Flat (EPC Rating: D)

# 42 WINDMILL PLATT, HANDCROSS, WEST SUSSEX, RH17 6BT

Per Month

## £1,075 Per



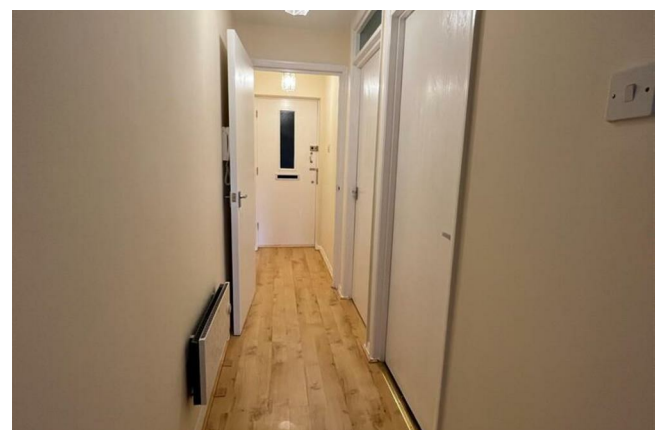
# 1 Bedroom Flat located in Handcross

We are pleased to offer this well-presented one-bedroom ground floor flat, ideally located in a convenient area of Crawley.

The property features a good-sized main bedroom with double glazing and a bright, spacious living room, perfect for relaxing or entertaining. The kitchen is well-proportioned and comes with integrated appliances including a washing machine, fridge freezer, gas hob, and oven. The main bathroom offers a practical and modern finish with a bath.

Additional benefits include double-glazed windows throughout, gas central heating, and communal parking for residents.

This flat presents an excellent opportunity for those seeking a comfortable and well-located home. Available from 20th March – for enquiries or to arrange a viewing, please contact us directly.

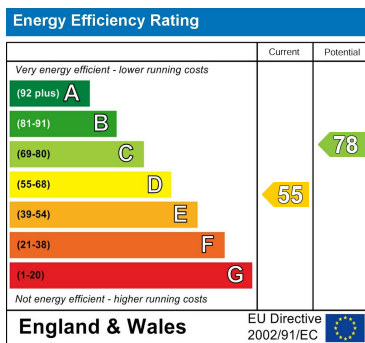


RICHMOND HOUSE - LETTINGS | 105 HIGHSTREET, CRAWLEY, WEST SUSSEX, RH10 1DD

Council Tax Band

**A**

Energy Performance Graph



Call us on

**01293529993**

**info@connectukgroup.co.uk**  
**connectukgroup.co.uk**

*Agents Note: Whilst every care has been taken to prepare these particulars, they are for guidance purposes only. All measurements are approximate and are for general guidance purposes only and whilst every care has been taken to ensure their accuracy, they should not be relied upon and potential buyers are advised to recheck the measurements.*