



2 River View Dale Road North, Darley Dale, Derbyshire, DE4 2HX

Saxton Mee

## 2 River View Dale Road North

Guide Price

# £250,000

£250,000 - £265,000 Guide Price

This three double bedroom semi-detached property offers well-presented and spacious family accommodation, fully renovated by the current owners and ideally located in the highly sought-after village of Darley Dale. The home is within easy reach of a variety of local shops and amenities, while the excellent range of leisure facilities and services in nearby Bakewell and Matlock are also close at hand. Positioned within the catchment area for highly regarded schools and surrounded by opportunities for outdoor pursuits, the property combines convenience with an appealing countryside setting.

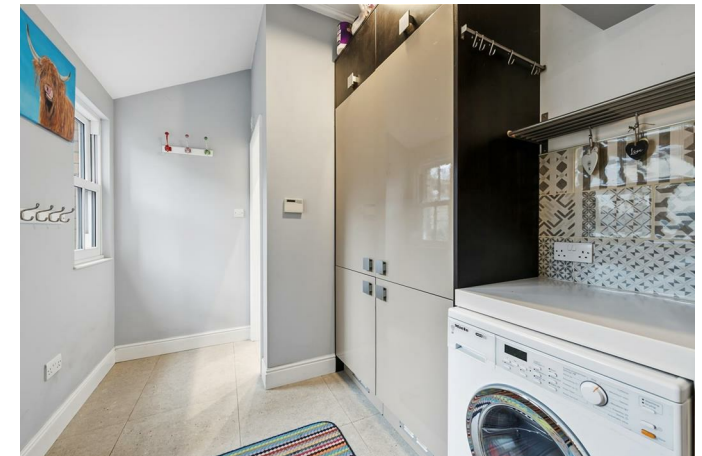
The accommodation is arranged to provide a practical and comfortable layout throughout. On the ground floor, an entrance and utility room leads through to a shower room, alongside a fitted dining kitchen equipped with a range of units and integrated appliances. The living room provides a welcoming space to relax, centred around a fireplace housing a log-burning stove, and a front entrance porch completes this level.

To the first floor, the landing gives access to two generously proportioned double bedrooms and a luxurious family bathroom finished to a high standard. A further double bedroom is located on the second floor, featuring useful eaves storage and enjoying an elevated outlook.

Externally, the property benefits from off-road parking for two vehicles, accessed via a driveway leading to the rear. There is an easily maintained front garden, a courtyard area to the side and a rear garden incorporating a wood store and additional storage. Attractive countryside views enhance the outdoor setting, adding to the overall appeal of this thoughtfully updated home.

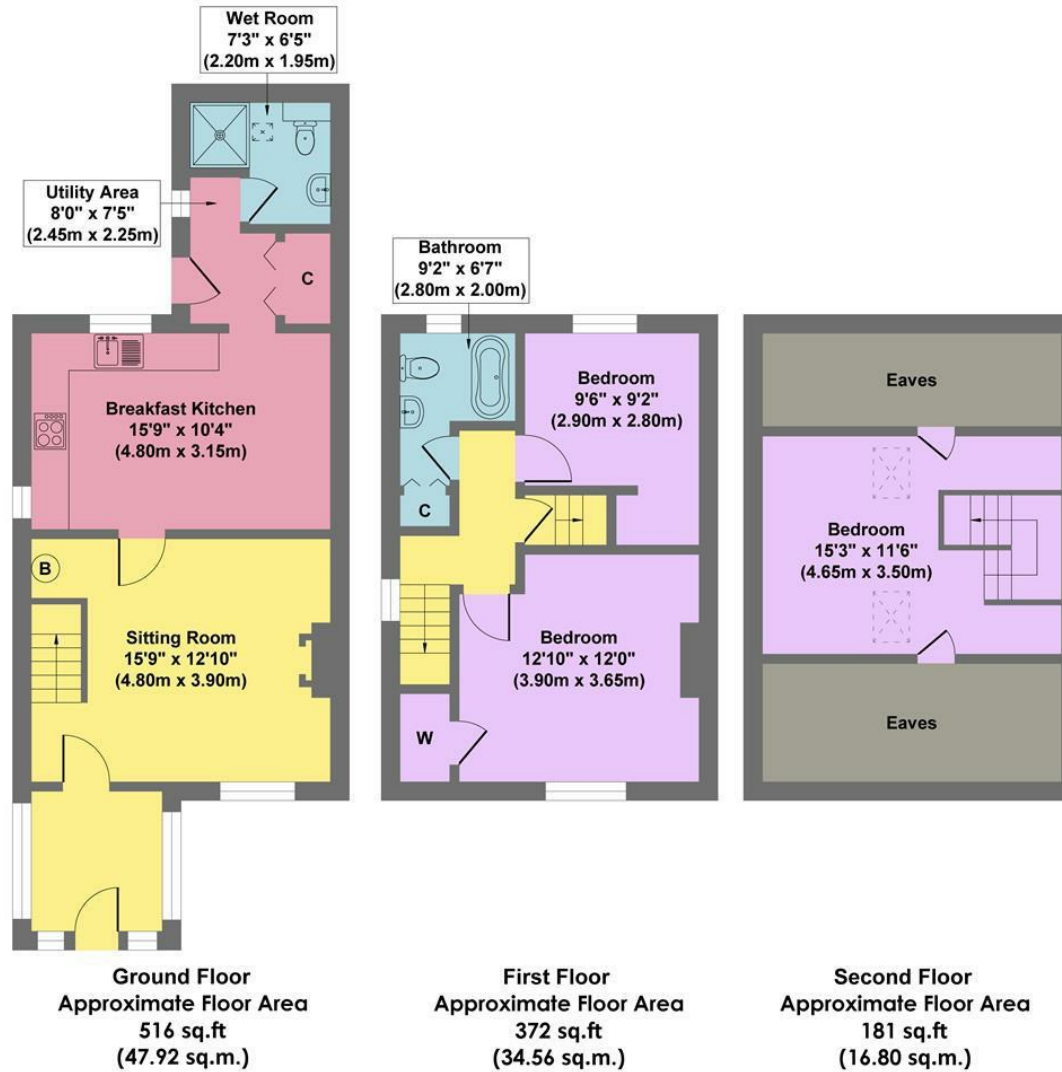


- Countryside Views
- Excellent Local Amenities
- Well Presented And Fully Renovated
- Off Road Parking For Two Vehicles
- Within Highly Regarded School Catchment
- Three Double Bedrooms Over Three Floors
- Underfloor Heating Throughout
- Ground Floor Shower Room
- EPC: C
- Viewings: Bakewell Office





## 2 Riverside View



**Approx. Gross Internal Floor Area 1069 sq.ft / 99.28 sq.m**

Illustration for identification purposes only. Measurements are approximate, not to scale

While we endeavour to make our sales particulars fair, accurate and reliable, they are only a general guide to the property and, accordingly, if there is any point, which is of particular importance to you, please contact the relevant office. The Agents have not tested any apparatus, equipment, fittings or services and so cannot verify they are in working order. The buyer is advised to obtain verification. Please note all the measurement details are approximate and should not be relied upon as exact. All plans, floor plans and maps are for guidance purposes only and are not to scale. Under no circumstances should they be relied upon as exact or for use in planning carpets and other such fixtures, fittings or furnishings. YOUR HOME IS AT RISK IF YOU DO NOT KEEP UP REPAYMENTS ON A MORTGAGE OR OTHER LOAN SECURED ON IT. 'A Life Assurance policy may be requested.' 'Written Quotations of credit terms available on request.'

Banner Cross  
T: 0114 268 3241  
E: [bannercross@saxtonmee.co.uk](mailto:bannercross@saxtonmee.co.uk)  
[www.saxtonmee.co.uk](http://www.saxtonmee.co.uk)

Hathersage  
T: 01433 650009  
E: [hathersage@saxtonmee.co.uk](mailto:hathersage@saxtonmee.co.uk)

Bakewell  
T: 01629 815307  
E: [bakewell@saxtonmee.co.uk](mailto:bakewell@saxtonmee.co.uk)

Matlock  
T: 01629 828250  
E: [matlock@saxtonmee.co.uk](mailto:matlock@saxtonmee.co.uk)

