





NEXA Properties are delighted to welcome to the market this 3 bed home located in Ellison's Crescent, Waterlooville. Situated close to the town centre, the accommodation includes a 17ft lounge, two parking spaces, modern kitchen, landscaped garden and a ground floor cloakroom. Being well presented throughout.

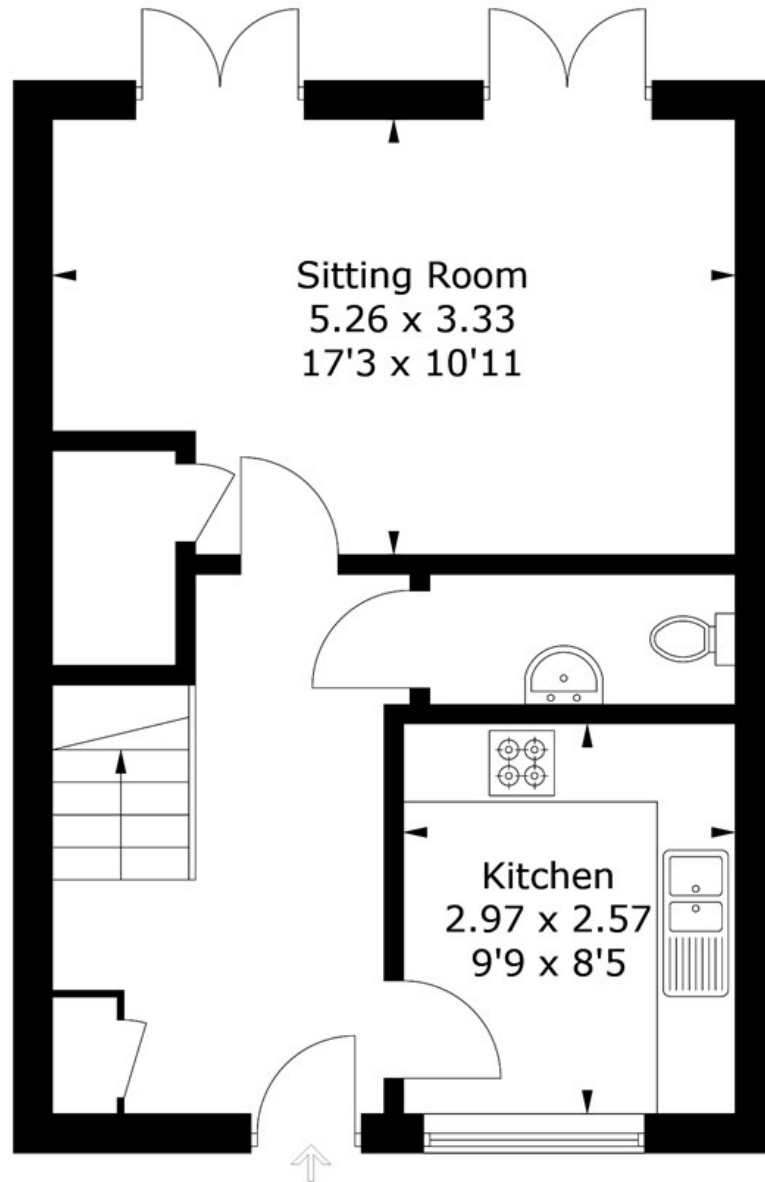
Contact Amy at NEXA today to arrange a viewing.

- Modern Kitchen
- Three Bedrooms
- Two Parking Spaces
- Available August
- 17ft Lounge
- High Specification
- Close To Town Centre
- Ground Floor Cloakroom

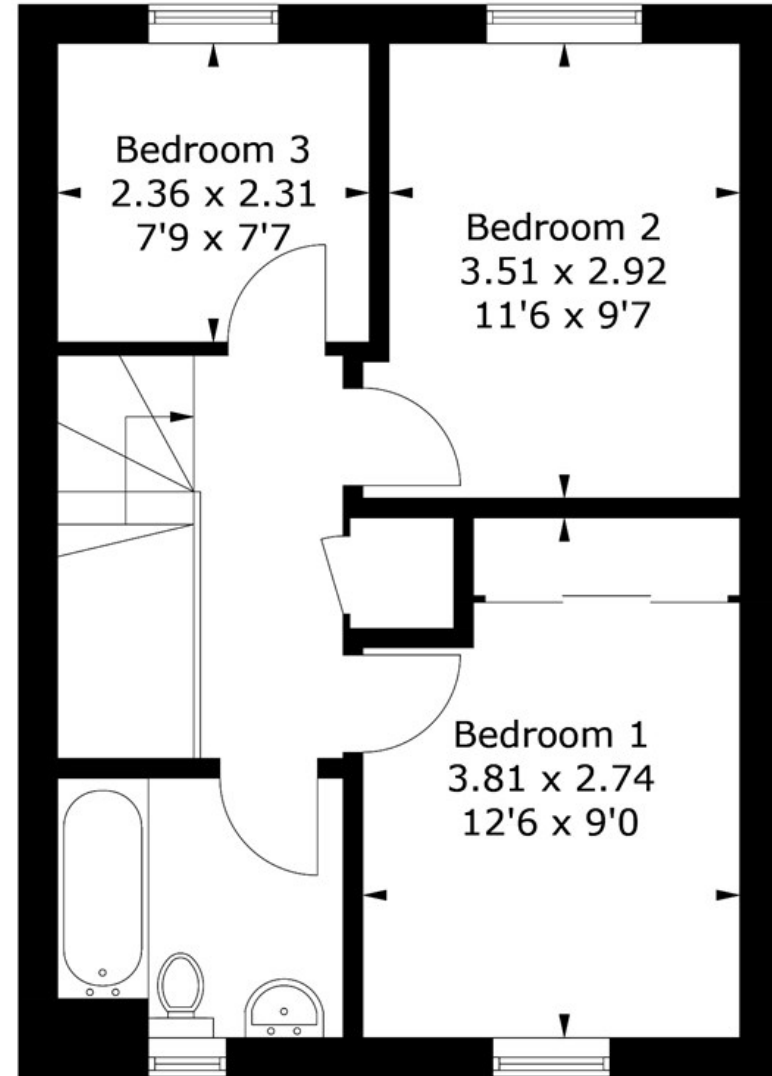


5 Ellisons Crescent, PO7 3AP

Approximate Gross Internal Area = 80.8 sq m / 870 sq ft



Ground Floor



First Floor

PRODUCED FOR NEXA PROPERTIES

Whilst every attempt has been made to ensure the accuracy of the floorplan, measurements of doors, windows and rooms are approximate. These plans are for representation purposes only as defined by RICS Code of Measuring Practice and used as such by any prospective purchaser. (ID685373)