



Jordan fishwick

Lea Road Hayfield High Peak

**Lea Road Hayfield High Peak SK22
2HE**

£350,000



The Property

Located in the popular village of Hayfield, surrounded by open countryside, a charming, extended, three double bedroom semi-detached family home. Well presented throughout and boasting spacious accommodation arranged over three floors. Private enclosed gardens, pvc double glazing and gas central heating. Comprising: entrance hall, 19ft living room, fitted kitchen, utility room/store, rear sitting room with bi-fold doors, two first floor double bedrooms, bathroom with white suite and second floor attic bedroom. Within easy reach of Hayfield shops and highly regarded primary school. Viewing essential.




- Accommodation Over Three Floors
- Three Double Bedrooms
- Extended Semi-Detached Family Home
- Wonderful Views
- Close To Open Countryside
- Perfect For Hayfield Amenities and School
- Well Presented Throughout
- Private Gardens

Postcode SK22 2HE

EPC Rating

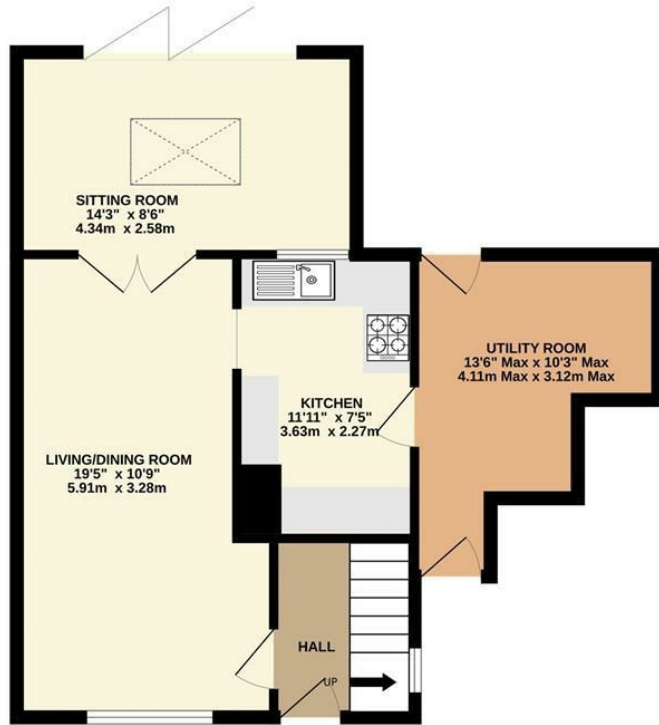
Local Authority High Peak

Council Tax C

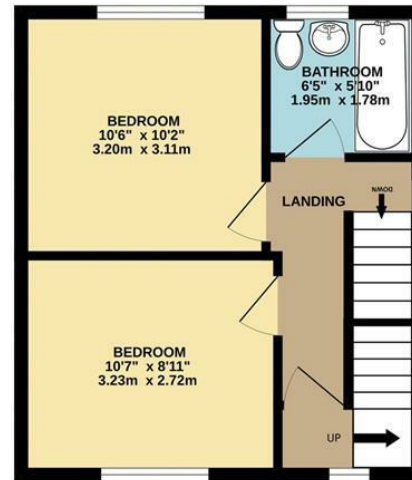
Energy Efficiency Rating		Current	Potential
Very energy efficient - lower running costs			
(92 plus)	A		
(81-91)	B		
(69-80)	C		
(55-68)	D		
(39-54)	E		
(21-38)	F		
(1-20)	G		
Not energy efficient - higher running costs			
England & Wales		EU Directive 2002/91/EC 	



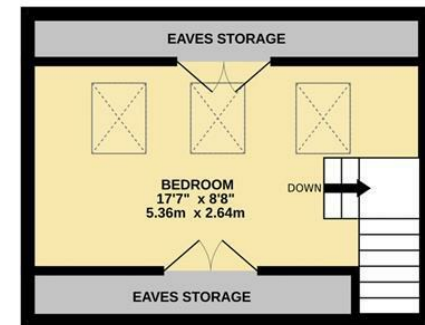
GROUND FLOOR



1ST FLOOR



2ND FLOOR



Whilst every attempt has been made to ensure the accuracy of the floorplan contained here, measurements of doors, windows, rooms and any other items are approximate and no responsibility is taken for any error, omission or mis-statement. This plan is for illustrative purposes only and should be used as such by any prospective purchaser. The services, systems and appliances shown have not been tested and no guarantee as to their operability or efficiency can be given.
Made with Metropix ©2026



These particulars are believed to be accurate but they are not guaranteed and do not form a contract. Neither Jordan Fishwick nor the vendor or lessor accept any responsibility in respect of these particulars, which are not intended to be statements or representations of fact and any intending purchaser or lessee must satisfy himself by inspection or otherwise as to the correctness of each of the statements contained in these particulars. Any floorplans on this brochure are for illustrative purposes only and are not necessarily to scale.

Offices at: Chorlton, Didsbury, Disley, Hale, Glossop, Macclesfield, Manchester Deansgate, Manchester Whitworth Street, New Mills, Sale, Wilmslow and Withington

14 Market St, Disley, Cheshire, Stockport SK12 2AA

01663 767878

disley@jordanfishwick.co.uk

www.jordanfishwick.co.uk