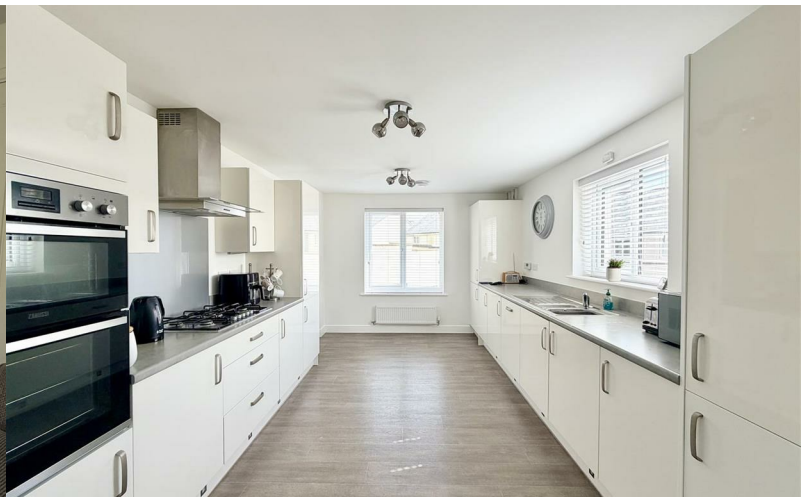




1 Harvest Close

Tamerton Foliot, Plymouth, PL5 4EG

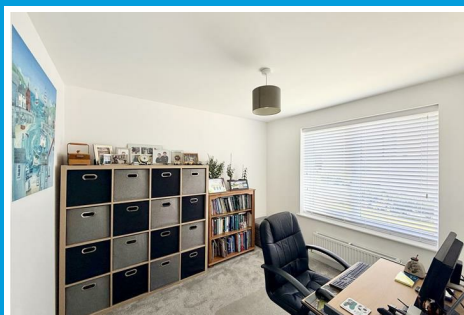
£500,000



1 Harvest Close

Tamerton Foliot, Plymouth, PL5 4EG

£500,000



HARVEST CLOSE, TAMERTON FOLIOT, PLYMOUTH, PL5 4EG

ACCOMMODATION

Entrance via a composite front door with obscured glazed panels which opens into the entrance hall.

ENTRANCE HALL

15'7" x 6'3" (4.77m x 1.92m)

Staircase rising to the first floor landing with under-stairs storage cupboard. Doors leading to the kitchen, family room, utility/wc & meter cupboard.

FAMILY ROOM

9'10" x 8'8" (3.02m x 2.66m)

uPVC double-glazed window to the front. Currently being used as a study. Fitted blinds.

UTILITY/WC

8'9" x 5'4" (2.67m x 1.65m)

Close coupled wc. Wash hand basin inset into roll edge laminate work surface with matching up-stand. Storage cupboards below. Position for an integrated washing machine. Grey wood effect vinyl flooring.

SITTING ROOM

15'5" x 12'9" (4.71m x 3.89m)

uPVC double-glazed French doors with uPVC double-glazed windows on either side opening to the rear garden. Door leading into the dining room.

DINING ROOM

12'9" x 10'7" (3.9m x 3.25m)

Ample space for a dining table. uPVC double-glazed French doors with windows on either side opening out to the rear garden onto a patio. Twin wooden doors open into the kitchen.

KITCHEN

15'7" x 10'11" (4.77m x 3.33m)

Attractive matching base & wall mounted units to include a twin oven, fridge/freezer & dishwasher. Roll edge laminate work surface has inset 5 ring Zanussi hob with filter hood over. Wall mounted Ideal Logic combination boiler concealed in a cupboard. A 1.5 bowl sink unit with mixer tap. Matching up-stands to the work surfaces. uPVC double-glazed window to the side & to the front. Fitted blinds. Grey wood effect vinyl flooring. Dual aspect.

HALF LANDING

L-shaped landing with doors leading to the bedrooms, bathroom & cupboard which houses the hot water pressured cylinder. Access hatch to roof void.

BEDROOM ONE

16'2" x 11'10" maximum (4.93m x 3.61m maximum)

uPVC double-glazed windows to the front with fitted blinds. Door opens to the en-suite.

EN-SUITE

6'9" x 4'9" (2.06m x 1.47m)

Matching suite of twin shower cubical with dual shower heads both rainfall & handheld, close coupled wc & pedestal wash hand basin. Chrome heated towel rail. Obscured uPVC double-glazed window to the front.

BEDROOM TWO

13'2" x 10'11" (4.03m x 3.35m)

Dual aspect room with uPVC double-glazed windows to the front & side, both with fitted blinds.

BEDROOM THREE

15'5" narrowing to 9'1" x 10'11" narrowing to 7'4"
(4.7m narrowing to 2.79m x 3.35m narrowing to 2.24m)

Good-sized recess that will fit a fitted wardrobe. uPVC double-glazed window to the rear overlooking the garden with fitted blinds.

BEDROOM FOUR

12'5" x 8'3" (3.81m x 2.53m)

uPVC double-glazed window to the rear overlooking the rear garden with fitted blinds.

BATHROOM

9'1" narrowing to 6'3" x 6'7" narrowing to 3'3"
(2.79m narrowing to 1.91m x 2.02m narrowing to 1m)

Matching suite of panelled bath with fitted shower over, pedestal wash hand basin & close coupled wc. Chrome heated towel rail. Obscured uPVC double-glazed window to the rear. Grey wood effect vinyl flooring.

OUTSIDE

The property is approached via a paved path which leads to the front door. This is bordered by two sections

of lawn with hedge borders to the front. Parking for up to 4 vehicles on the driveway to the fore of the double garage. Electric car charging point.

DOUBLE GARAGE

19'8" x 21'1" (6m x 6.45m)

Up & over door. Light & power available.

GARDEN

To the rear an enclosed garden which sits on a corner plot with large paved patio to the rear of the property. A wooden gate gives access around to the front of the property. Access for taking bins in and out. The main garden is laid to lawn with flower & shrub border running along to the rear boundary. Boundaries are wood panel fencing. A couple of steps lead up to a composite decked seating area which provides a lovely vantage point over the garden & a nice space to enjoy entertaining family & friends.

COUNCIL TAX

South Hams

Council Tax Band: E

SERVICES

The property is connected to all the mains services: gas, electricity, water and drainage.



Road Map



Hybrid Map

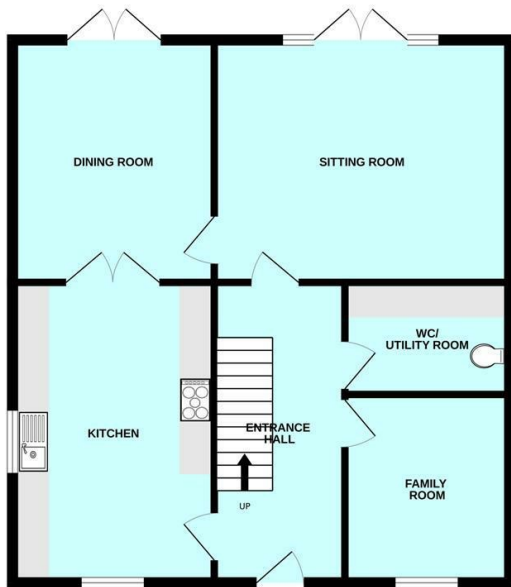


Terrain Map

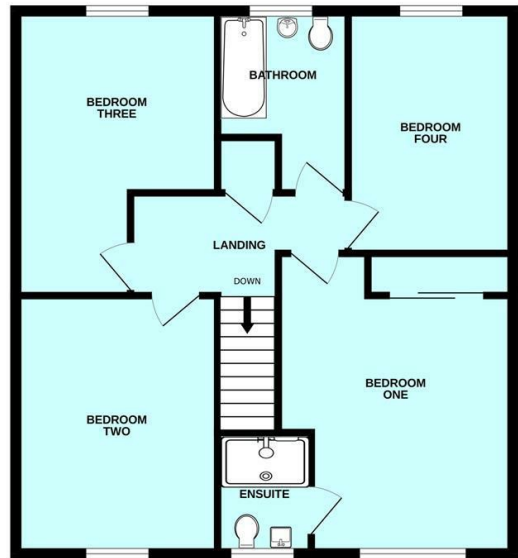


Floor Plan

GROUND FLOOR



1ST FLOOR

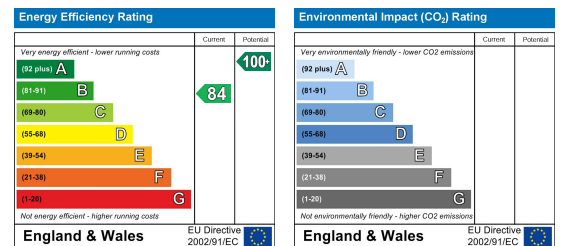


Made with Metropix ©2026

Viewing

Please contact our Plymouth Office on 01752 664125 if you wish to arrange a viewing appointment for this property or require further information.

Energy Efficiency Graph



These particulars, whilst believed to be accurate are set out as a general outline only for guidance and do not constitute any part of an offer or contract. Intending purchasers should not rely on them as statements of representation of fact, but must satisfy themselves by inspection or otherwise as to their accuracy. No person in this firm's employment has the authority to make or give any representation or warranty in respect of the property.