



# Birchington Road

London, NW6

£2,000 per month  
(£461.54 per week)

A well-presented two bedroom flat set within a charming period conversion, ideally located just a short walk from Kilburn High Road Station.

**CHESTERTONS**





# Birchington Road

London, NW6

- 2 Double Bedrooms
- Period Conversion
- Separate Kitchen
- Unfurnished
- First Floor





A well-presented two bedroom flat set within a charming period conversion, ideally located just a short walk from Kilburn High Road Station. The property offers a comfortable lounge, separate fitted kitchen, two generous double bedrooms, and a well-appointed bathroom.

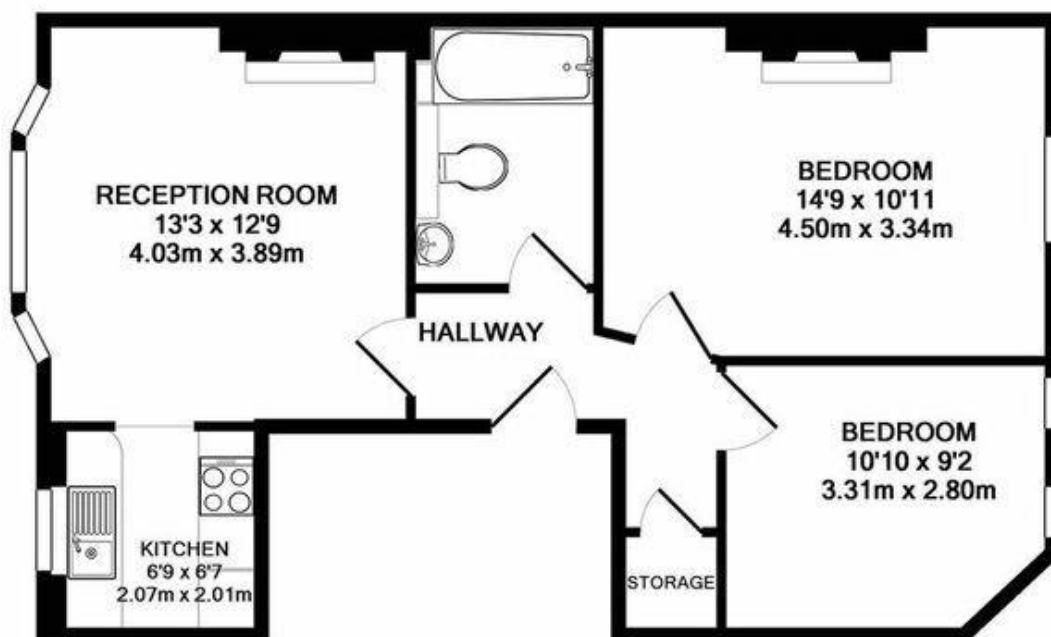
**Minimum Term:** 12 months  
**Deposit Required:** £2,307.69  
**Local Authority:** London Borough Of Camden  
**Council Tax Band:** D  
**EPC Rating:** C  
**Unfurnished**

Score	Energy rating	Current	Potential
92+	A		
81-91	B		
69-80	C	71 C	78 C
55-68	D		
39-54	E		
21-38	F		
1-20	G		

### *Chestertons Hampstead Lettings*

55-56 Hampstead High Street  
 Hampstead  
 London  
 NW3 1QH  
[hampsteadlettingsusers@chestertons.co.uk](mailto:hampsteadlettingsusers@chestertons.co.uk)  
 02077941125  
[chestertons.co.uk](http://chestertons.co.uk)

Additional tenant charges apply (fees apply to non-AST tenancies only)  
 Tenancy Agreement Fee: £300  
 References per Tenant/Guarantor: £60  
 Inventory check (approx. £100 – £250 inc. VAT)  
[chestertons.co.uk/property-to-rent/applicable-fees](http://chestertons.co.uk/property-to-rent/applicable-fees)



BIRCHINGTON ROAD NW6  
TOTAL APPROX. FLOOR AREA 581 SQ.FT. (54.0 SQ.M.)

Floorplans are for identification and guideline purposes only, not to scale. Compliant with RICS code of measuring practice. Floor plan supplied by Chik Chak Limited.  
Made with Metropix G2017.

