



Price

£1,800 PCM

Fees Apply



Available 12/03/26

**Pembury Road
Tonbridge TN9**

Wards
Helping you move forwards



Main Features

- Excellent location
- Appliances included
- Off-street parking
- Modern
- Close to station
- Garden



Deposit required is £2,076.92
Tonbridge and Malling District - Council Tax Band Tax Band E

Renting a property is a big commitment and we recommend that you visit the local authority website and these websites which offer helpful information and advice about letting

www.gov.uk/government/publications/how-to-rent

www.gov.uk/private-renting

www.wardsofkent.co.uk/renting/tenancy-fees-individuals/

www.gov.uk/green-deal-energy-saving-measures

Call Tonbridge 01732 770833 ■ wardsofkent.co.uk

IMPORTANT INFORMATION: Please contact our Lettings Team who will confirm the total costs involved in renting this property. For clarification, we wish to inform the prospective tenant that we have prepared these details as a general guide. The agent has not carried out a detailed survey nor tested the services, appliances, or specific fittings (unless otherwise stated), and no warranty can be given as to their condition. All room measurements are taken at floor level. We strongly recommend that all the information which we provide about the property is verified by yourself and your advisers. The contents of this publication are © Wards, 2015. Wards is a trading name of Arun Estates Limited Registered in England No. 2597969

Accommodation

Entrance hallway

WC

Dining room 3.58 x 3.15

Kitchen 2.24 x 2.16

Lounge 3.70 x 4.53

Bedroom 2 4.53 x 2.82

Bathroom

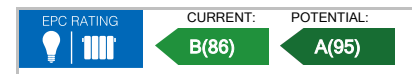
Bedroom 3 4.53 x 3.26

Bedroom 1 3.90 x 3.36

En-suite shower room

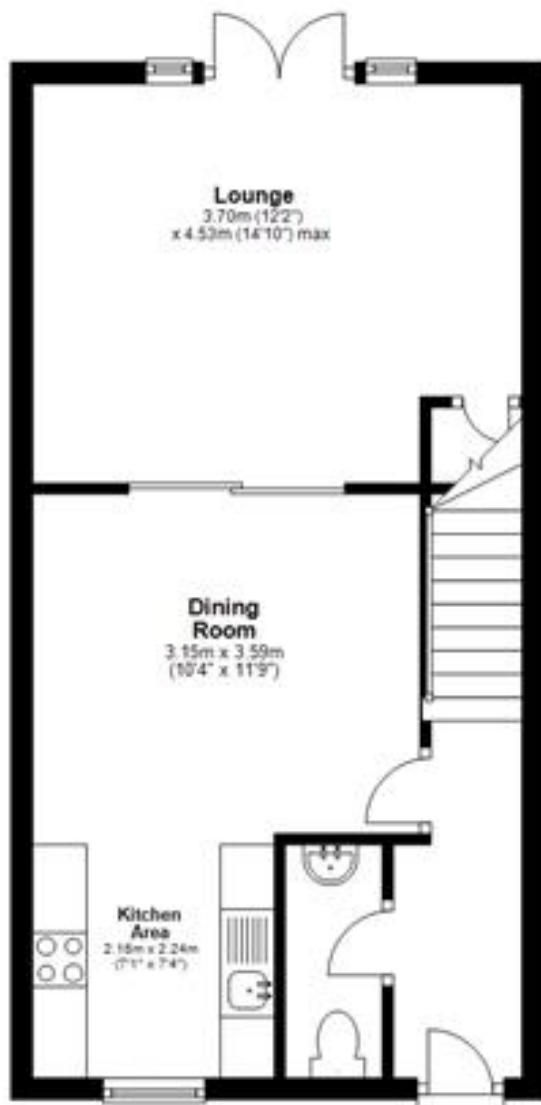
Garden

Allocated off street parking



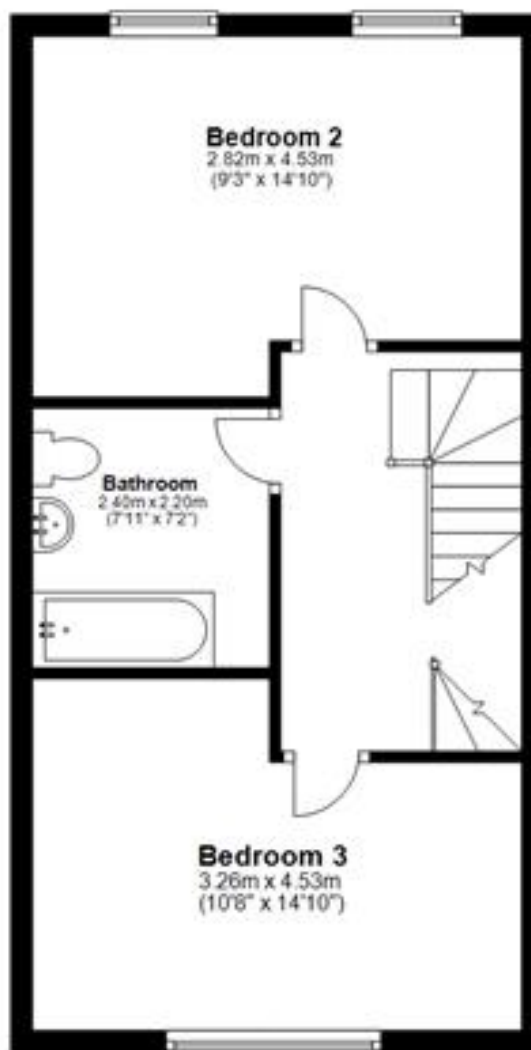
Ground Floor

Approx. 41.7 sq. metres (448.8 sq. feet)



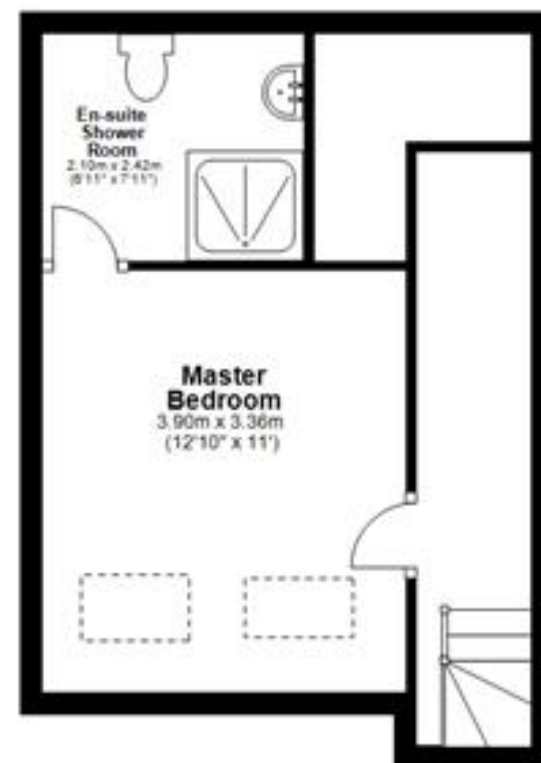
First Floor

Approx. 28.2 sq. metres (303.7 sq. feet)



Second Floor

Approx. 28.2 sq. metres (303.1 sq. feet)



Total area: approx. 98.1 sq. metres (1055.6 sq. feet)