



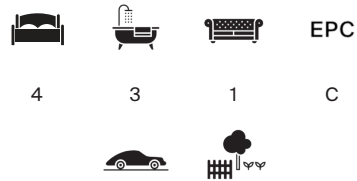
CANONBURY LANE

London N1



A DISTINCTIVE ARCHITECT- DESIGNED HOME IN CANONBURY.

This striking house was conceived in the late 1980s by architect Christopher Libby, blending subtle references to its Victorian surroundings with a confident, sculptural identity of its own.



Local Authority: London Borough of Islington

Council Tax band: G

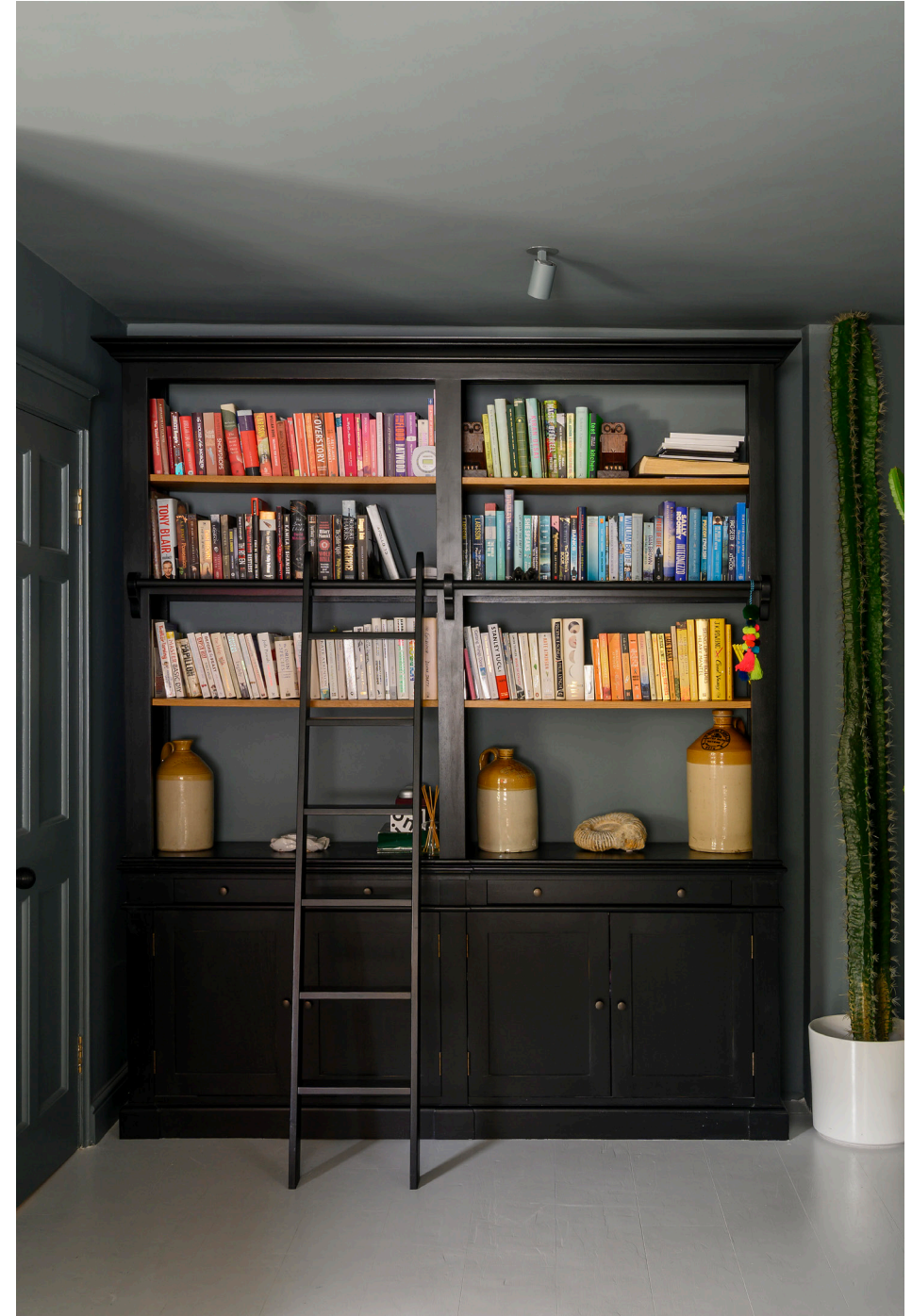
Tenure: Freehold

Guide Price: £2,750,000



Inside, the design focuses on openness, light and visual connection, with carefully framed views and a natural flow between spaces. A welcoming entrance hall introduces engineered oak parquet flooring with underfloor heating, while an arched window draws daylight deep into the plan.

The ground floor has been thoughtfully reworked to enhance its relationship with the outdoors, creating a generous open-plan kitchen, dining and living space that extends seamlessly into the garden. The kitchen is arranged in a refined galley layout, anchored by a marble-clad island and integrated appliances, with reflective surfaces and concealed storage enhancing both practicality and light.







Large sliding glass doors open directly onto the courtyard, encouraging easy indoor-outdoor living, while an informal seating area provides a relaxed counterpoint. A playfully finished cloakroom completes this level.

Upstairs, a substantial first-floor reception room is bathed in natural light from multiple sash windows and includes a raised study area that captures views along the lane through a combination of full-height and circular openings. The house provides four bedrooms arranged across the upper floors, each thoughtfully proportioned. The top floor is dedicated to a tranquil principal suite set beneath the eaves, with bespoke storage and a spacious en-suite bathroom.

Outside, the private courtyard garden is enclosed by high walls, offering a peaceful and low-maintenance setting with scope for further planting. It can be accessed both from the main living space and via rear gates, alongside a driveway providing off-street parking and an electric vehicle charging point.



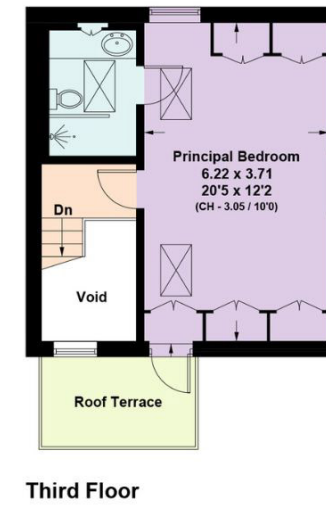
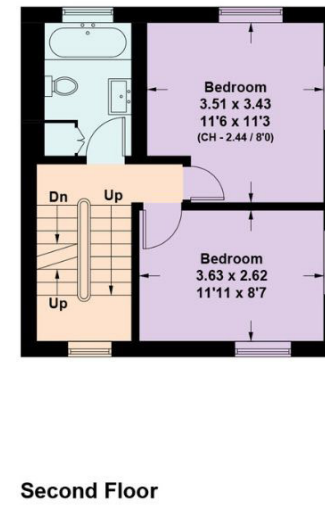
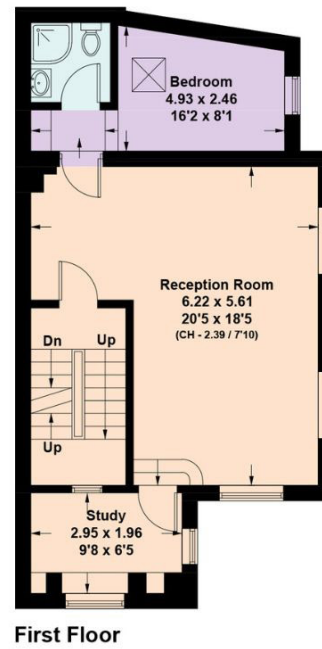
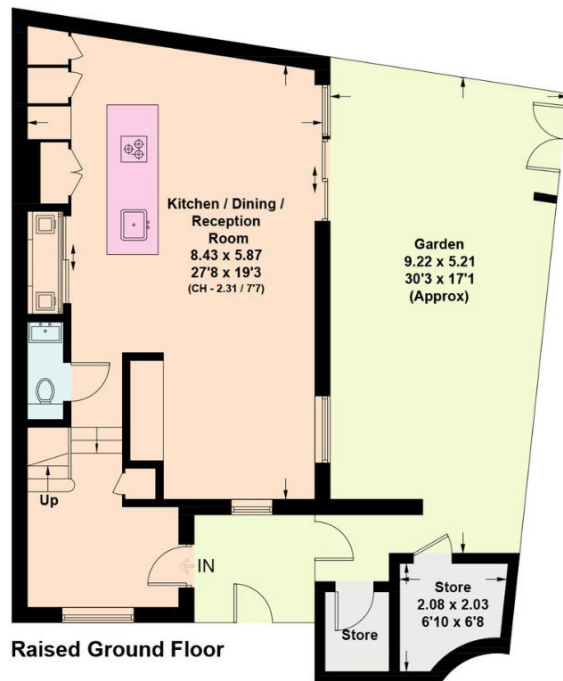
LOCATION

Canonbury Lane sits within one of Islington's most desirable pockets, moments from the refined charm of Canonbury Square and within easy reach of the vibrant amenities of Upper Street. The area is known for its independent shops, cafés and restaurants, alongside well-loved local pubs. Green space is abundant, with Highbury Fields and the scenic New River Walk both nearby, offering a welcome balance to urban life. Highbury & Islington station is within close proximity, providing swift connections via the Victoria line, Overground and National Rail services, making travel across London and beyond straightforward.









Approximate Gross Internal Area = 180.9 sq m / 1947 sq ft

This plan is for layout guidance only. Not drawn to scale unless stated. Windows and door openings are approximate. Whilst every care is taken in the preparation of this plan, please check all dimensions, shapes and compass bearings before making any decisions reliant upon them. (ID767266)



We would be delighted
to tell you more.

Sebastian Toy
+44 203 657 7348
sebastian.toy@knightfrank.com

Knight Frank Islington & King's Cross
321-322 Upper Street
London N1 2XQ

[knightfrank.co.uk](https://www.knightfrank.co.uk)

Your partners in property

1. Particulars: These particulars are not an offer or contract, nor part of one. You should not rely on statements given by Knight Frank in the particulars, by word of mouth or in writing ("information") as being factually accurate about the property, its condition or its value. Neither Knight Frank nor any joint agent has any authority to make any representations about the property, and accordingly any information given is entirely without responsibility on the part of Knight Frank. 2. Material Information: Please note that the material information is provided to Knight Frank by third parties and is provided here as a guide only. While Knight Frank has taken steps to verify this information, we advise you to confirm the details of any such material information prior to any offer being submitted. If we are informed of changes to this information by the seller or another third party, we will use reasonable endeavours to update this as soon as practical. 3. Photos, Videos etc: The photographs, property videos and virtual viewings etc. show only certain parts of the property as they appeared at the time they were taken. Areas, measurements and distances given are approximate only. 4. Regulations etc: Any reference to alterations to, or use of, any part of the property does not mean that any necessary planning, building regulations or other consent has been obtained. A buyer must find out by inspection or in other ways that these matters have been properly dealt with and that all information is correct. 5. Fixtures and fittings: A list of the fitted carpets, curtains, light fittings and other items fixed to the property which are included in the sale (or may be available by separate negotiation) will be provided by the Seller's Solicitors. 6. VAT: The VAT position relating to the property may change without notice. 7. To find out how we process Personal Data, please refer to our Group Privacy Statement and other notices at <https://www.knightfrank.com/legals/privacy-statement>.

Particulars dated May 2026. Photographs and videos dated May 2026. All information is correct at the time of going to print. Knight Frank is the trading name of Knight Frank LLP. Knight Frank LLP is a limited liability partnership registered in England and Wales with registered number OC305934. Our registered office is at 55 Baker Street, London W1U 8AN. We use the term 'partner' to refer to a member of Knight Frank LLP or an employee or consultant. A list of members names of Knight Frank LLP may be inspected at our registered office. If you do not want us to contact you further about our services then please contact us by either calling 020 3544 0692, email to marketing.help@knightfrank.com or post to our UK Residential Marketing Manager at our registered office (above) providing your name and address.