

Gloucester Terrace, W2

£540,000

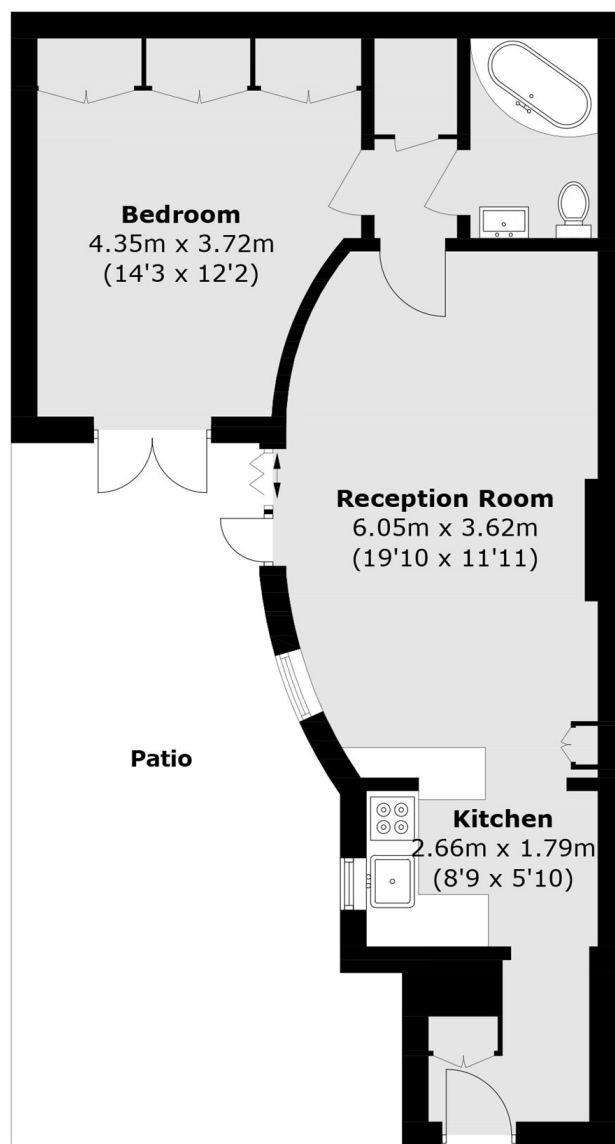
A well-proportioned one bedroom apartment in a Victorian period conversion. The property has been recently decorated throughout and features a spacious open plan reception with access to a private patio garden with bi-folding doors, and a double bedroom with plenty of built-in storage.

Gloucester Terrace is conveniently placed for the facilities and amenities available in Queensway. Lancaster Gate and Paddington stations are also located nearby.

Features

- One Bedroom
- Open Plan
- Private Patio Garden
- Period Conversion
- Hyde Park

Gloucester Terrace, LONDON, W2



Lower Ground Floor

Total area (approx.): 51.5 sq. m (554.3 sq. ft)