



## Station Road, NW10

### £500,000

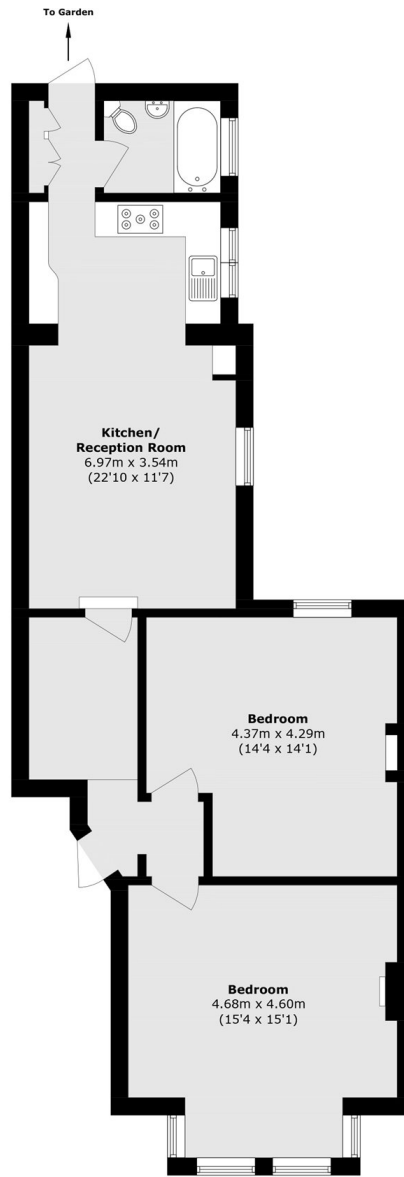
Situated within a well maintained period conversion, this ground floor flat offers two generous bedrooms and an open-plan kitchen and reception room, with direct access to a large private west-facing garden making it ideal for entertaining and outdoor living.

Station Road is conveniently located close to Willesden Junction station, offering Bakerloo line and London Overground. A wide selection of local shops, cafés, and restaurants can be found nearby, along with the open green spaces of Roundwood Park.

### Features

- Two Bedrooms
- Ground Floor Flat
- West-Facing Private Garden
- Leasehold
- Potential to Extend (STPP)
- Chain Free

# Station Road, London, NW10



## Ground Floor

Total area (approx.): 76.5 sq. m (823.4 sq. ft)

# Dexters

Kensal Rise  
62 Chamberlayne Road  
London  
NW10 3JJ

Sales  
020 8600 3100

Energy Rating: D. We aim to make our particulars both accurate and reliable. However they are not guaranteed; nor do they form part of an offer or contract. If you require clarification on any points then please contact us, especially if you're traveling some distance to view. Please note that appliances and heating systems have not been tested and therefore no warranties can be given as to their good working order.

 **RICS** | Regulated  
Estate Agent  
and Letting Agent

[dexters.co.uk](https://www.dexters.co.uk)