



HONEYSUCKLE COTTAGE, 22 WEST STREET, KINGSTON
£695,000 Freehold

This immaculately presented superior Grade II Listed semi-detached period cottage is situated in a conservation area in the sought after Purbeck village of Kingston, opposite the parish Church and some 300 metres from open country.

Honeysuckle Cottage is thought to date back to the 18th Century. The original building is constructed of natural Purbeck stone, the main roof being stone tiled; extensions have been added in more recent times. The property has undergone a meticulous and stylish renovation whilst maintaining a wealth of original character features including open fireplace with wood burning stove and beamed ceilings, resulting in an exceptionally fine home.

The village of Kingston lies on high ground approximately 2 miles from Corfe Castle and some 7 miles from the market town of Wareham, the latter having main line rail link to London Waterloo (approx. 2.5 hours). Kingston is in the heart of the Isle of Purbeck, close to the World Heritage Jurassic Coastline which includes many secluded picturesque coastal bays, Corfe Castle, the Bird Sanctuary at Arne and the superb sandy beaches of Studland, Swanage and Shell Bay.

Viewing is strictly by appointment through the Agents, **Corbens, 01929 422284**.
Postcode for SATNAV **BH20 5LH**.



Welcoming you to this characterful cottage, the triple aspect living room has a feature stone fireplace with fitted wood burning stove, beamed ceiling and flagstone flooring. Decorated in a neutral décor, this flows throughout the cottage amplifying the spaciousness and light. There is a formal dining room, which has an understairs storage cupboard and also has an open fireplace. The stylish kitchen is situated at the rear and has been fitted with a range of white units with a suite of integrated appliances including electric oven, hob, microwave, dishwasher, washing machine and fridge freezer. A stable door gives access to the rear garden, seamlessly blending the indoor/outdoor living space.

There are two double bedrooms on the first floor. Bedroom 1 has a fitted wardrobe and enjoys views over the garden to the Purbeck Hills. Bedroom 2 is a good sized double situated at the front of the cottage. The bathroom has been refitted with a modern suite comprising panelled bath, with twin shower heads over, wash basin with fitted cupboard and WC.

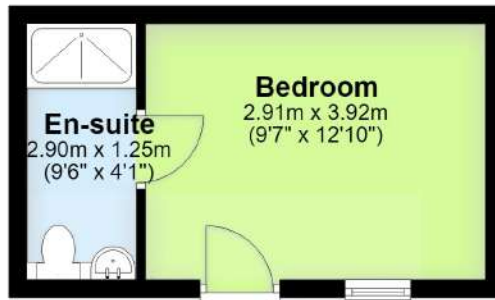
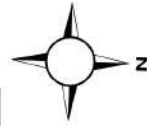
The front garden enjoys views over the valley to Corfe Castle and is lawned, bound by hedging and stone walling. The rear garden is lawned and planted with a mix of flower beds, borders and mature ornamental trees. The detached stone garage has been converted to form a one bedroom guest suite with en-suite shower room.



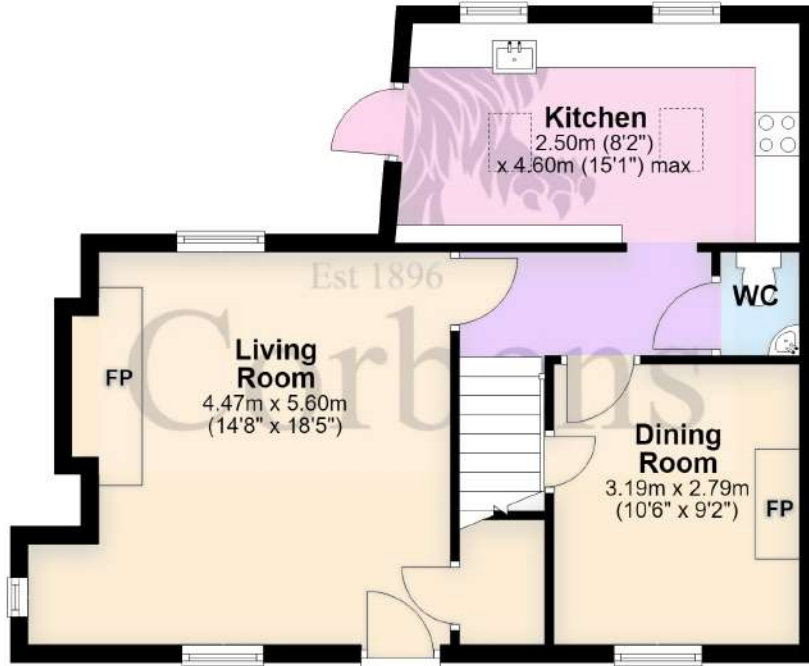
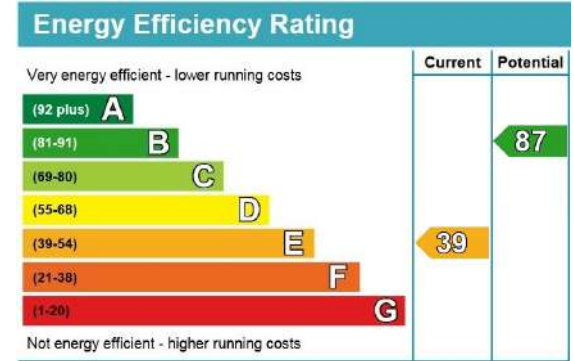
Property Reference KIN2326

Current Rateable Value - £3,900

Ground Floor



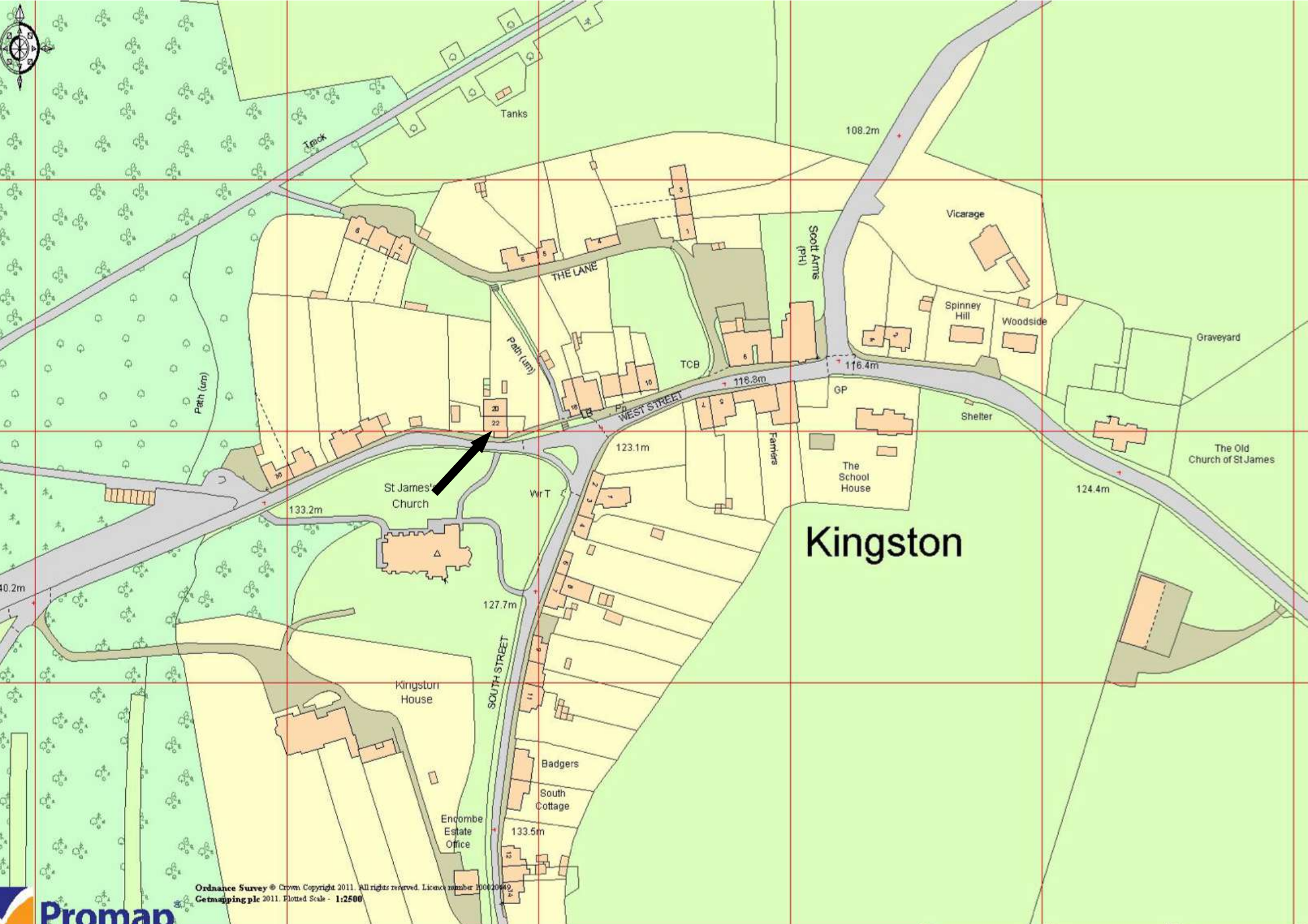
Video Tour Link



First Floor







Kingston

