



## REDFERN ROAD, NW10

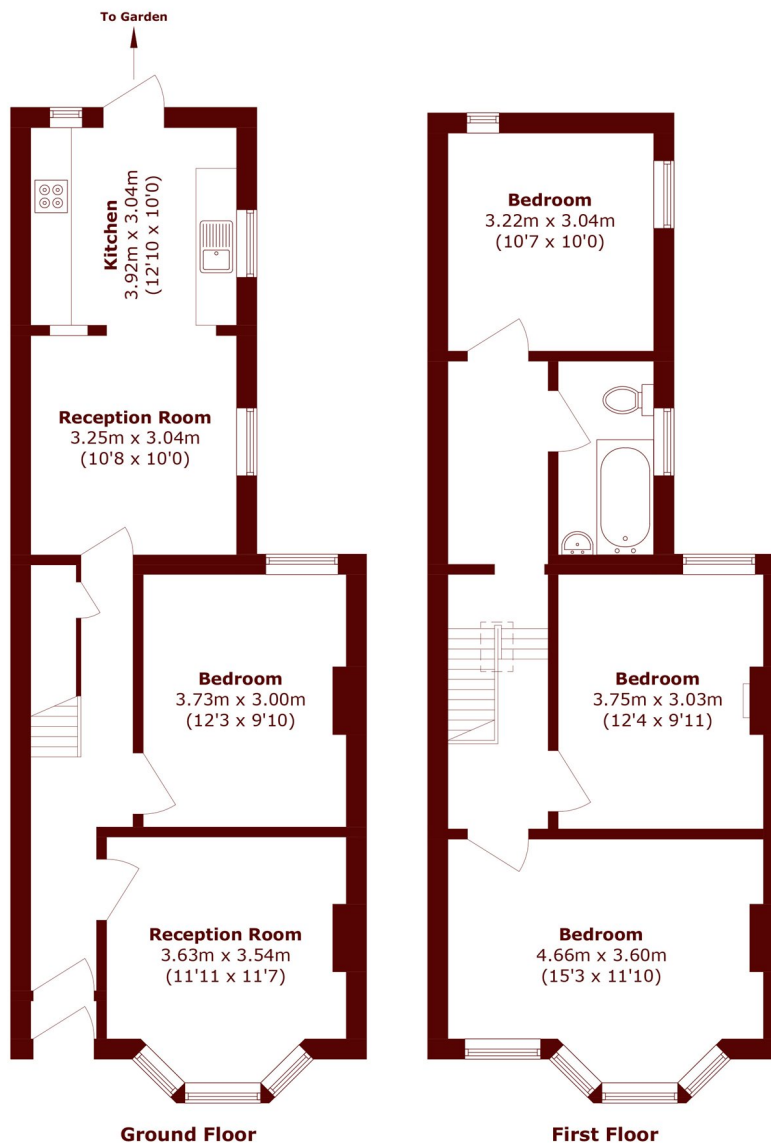
£595,000

A well proportioned, four bedroom family home arranged over 1,142sqft, comprising of two reception rooms, a separate eat-in kitchen, four substantial bedrooms, and a three-piece family bathroom.

Four bedrooms  
Victorian terrace

Potential to extend STP  
Quiet cul de sac

# STEP INSIDE REDFERN ROAD



Total area (approx.): 106.1 sq. m (1142.1 sq. ft)

**Willesden Green**  
020 8451 0420

Energy Rating: D We aim to make our particulars both accurate and reliable. However, they are not guaranteed; nor do they form part of an offer or contract. If you require clarification on any points then please contact us, especially if you're traveling some distance to view. Please note that appliances and heating systems have not been tested and therefore no warranties can be given as to their good working order

**MARSH &  
PARSONS**