



Reeves House, Hilltop Cottages, Brixton, Plymouth, Devon, PL8 2AY



Price £750,000



Reeves House is an individually designed and built property that was completed in 2023 to an exacting standard. The house delivers a seamless sense of flow, exceptional natural light, and far-reaching countryside views.

At its heart lies an elegant open-plan living space, defined by vaulted ceilings, expansive picture windows, and a strong connection to the surrounding landscape. The System Six kitchen is both sculptural and highly functional, featuring quartz work surfaces, high-quality integrated appliances, and carefully considered LED task and mood lighting—ideal for both everyday living and entertaining.

Accommodation is arranged over one level and comprises three generous double bedrooms, including a luxurious principal suite with a dedicated dressing area and a beautifully appointed Porcelanosa-finished en-suite. Bedrooms two and three have a Jack & Jill en-suite and there is an option of using the study as a fourth bedroom if needed. Comfort is assured throughout with thermostatically zoned underfloor heating, complemented by a MVHR system and ultrafast broadband.

Externally, the property enjoys beautifully landscaped gardens, incorporating a porcelain-tiled terrace, raised beds, and ample private parking. An integral garage provides further flexibility, complete with underfloor heating, and an electric remote door, utility area, and carpeted loft storage above.

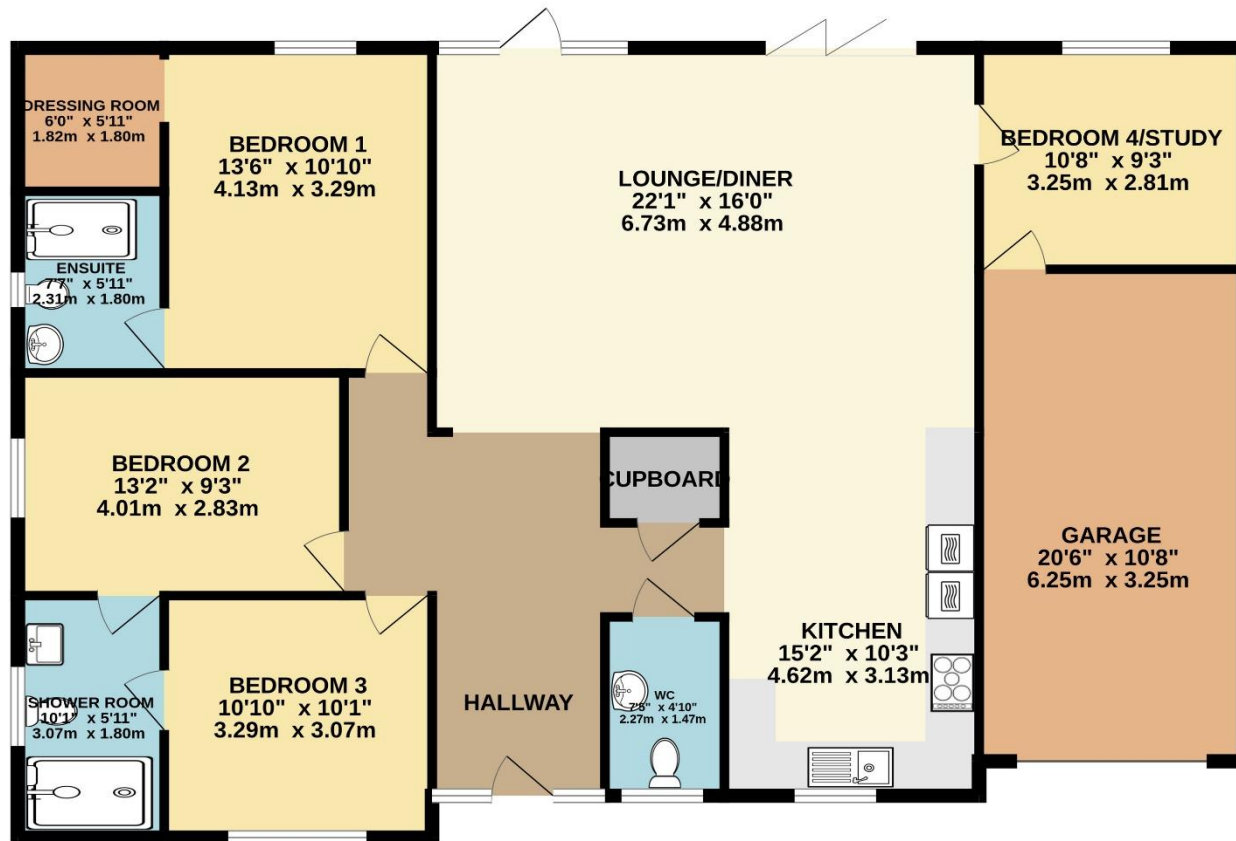
Reeves House represents a rare opportunity to acquire a thoughtfully designed contemporary home in a highly regarded village setting on the edge of Plymouth.



To view this property call Lang Town & Country Estate Agents on **01752 456000**.

www.langtownandcountry.com





TOTAL FLOOR AREA: 1553 sq.ft. (144.3 sq.m.) approx.
Measurements are approximate. Not to scale. Illustrative purposes only
Made with Metropix ©2026



Lang Town & Country

6 The Broadway

Plymstock

Plymouth

PL9 7AU

Tel: 01752 456000

Email: plymstockoffice@langtownandcountry.com

Lang Town & Country endeavour to ensure the accuracy of property details produced and displayed, we have not tested any apparatus, equipment, fixtures, fittings or services and so cannot verify that they are connected, in working order or fit for purpose. A buyer must check the availability of any property and make an appointment to view before embarking on any journey to see a property.

