

WILKINSON

SALES • LETTINGS • MANAGEMENT

£285,000

Warren Road, Northway, GL20



 3

Bedrooms

 1

Bathroom

101 High Street, Tewkesbury, Gloucestershire, GL20 5JZ |
Info@wilkinsonslm.co.uk

01684 367736



- End Terrace Home
- NO ONWARD CHAIN
- Lounge/Dining Room
- Kitchen
- Three Bedrooms
- Utility
- Porch
- Refitted Bathroom
- Garage & Off Road Parking
- Good Size Rear Garden
- UPVC Double Glazing
- Gas Central Heating

Wilkinson SLM are delighted to present a beautiful end-of-terrace home, with NO ONWARD CHAIN and ideally located in the sought-after residential area of Northway and occupying a generous plot.

The accommodation begins with an entrance porch leading into a welcoming hallway, where stairs rise to the first floor. To the right, a spacious lounge/dining room offers a comfortable and versatile living space, complete with a cleverly designed hidden storage cupboard behind the TV. Double doors open directly onto the garden, creating a seamless indoor-outdoor flow, while an additional door provides access to the kitchen.

The kitchen is well equipped with a range of base and wall units and offers convenient access to the garage and adjoining utility room. The utility space provides plumbing for a washing machine and direct access to the rear garden.

Upstairs, the property features three well-proportioned bedrooms, each benefiting from built-in wardrobes, along with a newly refitted modern family bathroom. A large airing cupboard on the landing adds further useful storage.

To the rear of the property the garden includes a patio seating area, a raised lawn, and a delightful mature Bramley apple tree. A substantial side area offers excellent potential, including suitability for caravan storage or hook-up.

Further benefits include UPVC double glazing, gas central heating with a boiler that is less than 2 years old, a garage, and ample off-road parking.

Lounge/Dining Room 21' 6" x 10' 4" (6.55m x 3.15m) *maximum measurements*

Kitchen 8' 3" x 11' 1" (2.51m x 3.38m)

Utility 4' 7" x 6' 3" (1.40m x 1.91m)

Bedroom One 12' 10" x 9' 6" (3.91m x 2.90m) *maximum measurements*

Bedroom Two 11' 9" x 7' 11" (3.58m x 2.41m)

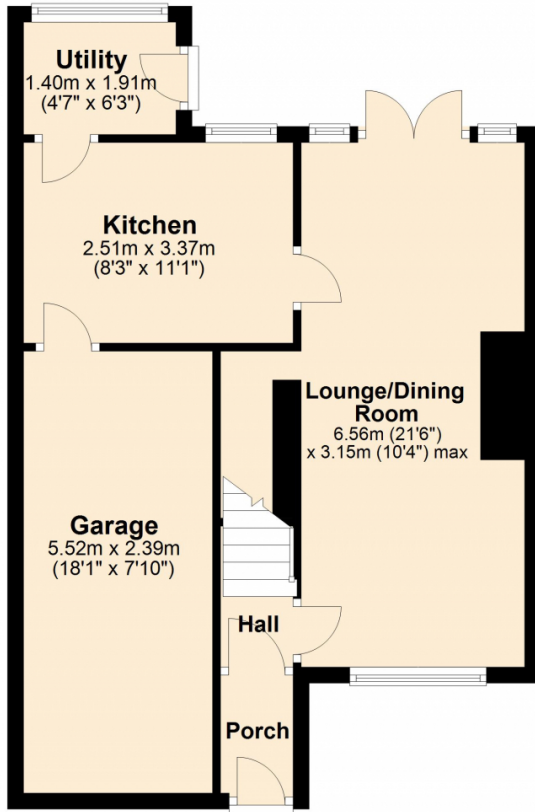
Bedroom Three 8' 5" x 10' 2" (2.57m x 3.10m) *maximum measurements*

Bathroom 5' 6" x 7' 11" (1.68m x 2.41m)

Garage 18' 1" x 7' 10" (5.51m x 2.39m)

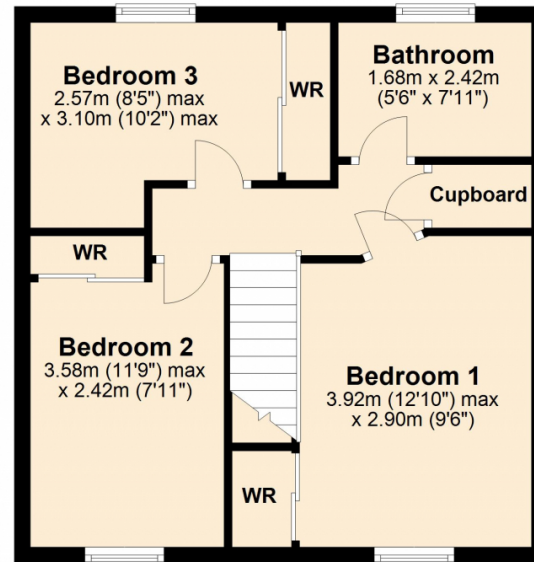
Ground Floor

Approx. 46.9 sq. metres (504.4 sq. feet)



First Floor

Approx. 41.1 sq. metres (442.4 sq. feet)



Total area: approx. 88.0 sq. metres (946.8 sq. feet)