



Stanstead Road, SE6

£325,000

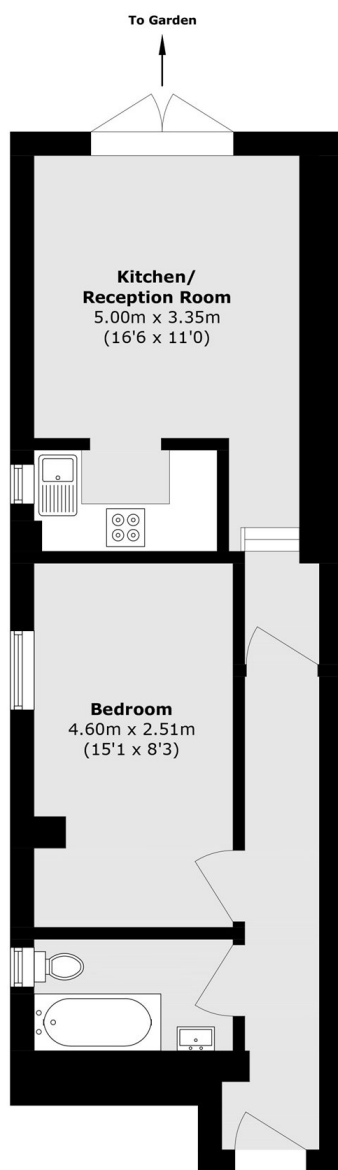
A charming one bedroom ground floor apartment offering bright and modern open plan living with direct access to a private garden. The property benefits from a long lease, is offered chain free, and is ideally located within easy reach of local amenities and nearby stations.

Stanstead Road is ideally located within easy reach of both Catford and Catford Bridge railway stations, offering convenient links into Central London and surrounding areas. The area benefits from a wide range of local amenities including supermarkets, cafés, restaurants and independent shops within Catford town centre. Residents can also enjoy nearby green spaces such as Mountsfield Park and Ladywell Fields, perfect for leisure, walking and outdoor activities.

Features

- One Bedroom
- Open Plan Living/Kitchen
- Private Garden
- Long Lease
- Close To Stations
- Chain free

Stanstead Road, London, SE6



Total area (approx.): 42.1 sq. m (453.2 sq. ft)