



Flat 5, 47 Anerley Park , SE20 8NQ

£1,400 PCM

Situated within an attractive Victorian conversion on the sought-after Anerley Park, this spacious one-bedroom second-floor apartment offers approximately 505 sq ft (46.9 sq m) of well-proportioned accommodation, ideally positioned between Crystal Palace and Penge.

The property features a bright and generously sized reception room, enhanced by large sash-style windows that flood the space with natural light and provide attractive rooftop views. The separate kitchen offers practical storage and workspace, whilst the well-proportioned double bedroom provides comfortable accommodation. A bathroom and entrance hallway complete the layout.

Anerley Park is one of the area's most desirable residential roads, perfectly placed for the open green spaces and recreational facilities of Crystal Palace Park, with its famous dinosaur sculptures, boating lake, sports facilities and regular community events. Residents can also enjoy the vibrant Crystal Palace Triangle, renowned for its excellent selection of independent cafés, restaurants, bars and boutique shops.

The property is exceptionally well connected, with Penge West Station just a short walk away, providing London Overground services and direct links to Canada Water, Shoreditch and Highbury & Islington. Nearby Crystal Palace Station offers additional London Overground services as well as direct rail connections to London Bridge, Victoria and East Croydon, making the property ideal for commuters.

This charming apartment would be perfect for a professional individual or couple seeking character accommodation in a highly convenient South East London location.

Viewing

Please contact our Galloways Penge Office on 020 8778 1120 if you wish to arrange a viewing appointment for this property or require further information.

- ONE BEDROOM VICTORIAN CONVERSION APARTMENT
- APPROXIMATELY 505 SQ FT / 46.9 SQ M
- BRIGHT AND SPACIOUS RECEPTION ROOM
- SEPARATE FITTED KITCHEN
- WELL-PROPORTIONED DOUBLE BEDROOM
- EXCELLENT NATURAL LIGHT THROUGHOUT
- A SHORT DISTANCE FROM CRYSTAL PALACE PARK
- WALKING DISTANCE TO PENGE WEST AND CRYSTAL PALACE STATIONS
- CLOSE TO LOCAL CAFÉS, RESTAURANTS AND AMENITIES
- POPULAR RESIDENTIAL LOCATION



1



1



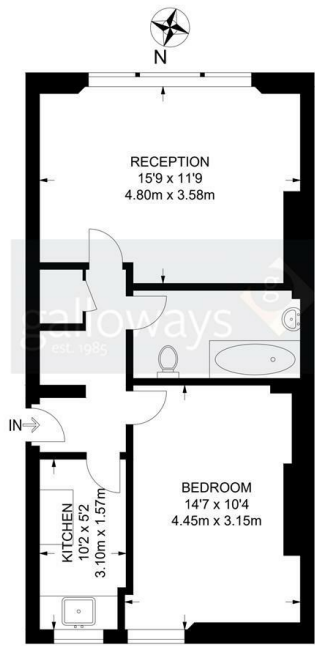
1



Floor Plan

Anerley Park, SE20 1 Bedroom Flat

APPROXIMATE GROSS INTERNAL AREA: 505 SQ FT / 46.9 SQ M

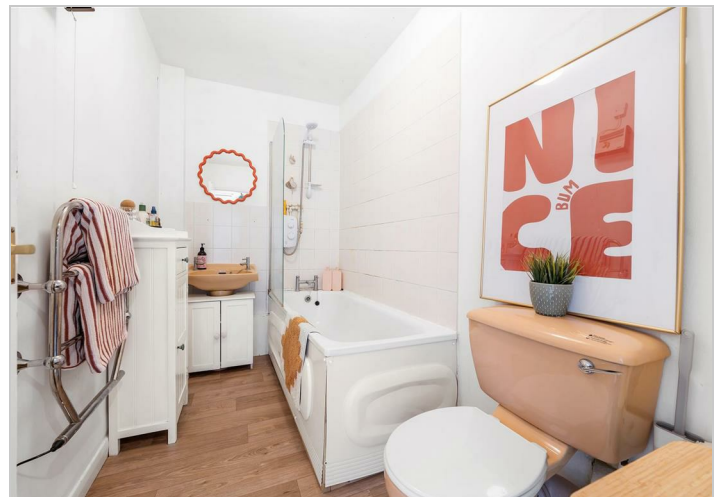
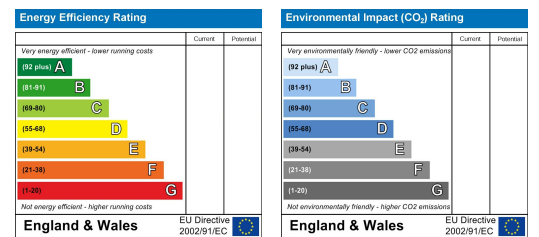


SECOND FLOOR

Area Map



Energy Efficiency Graph



These particulars, whilst believed to be accurate are set out as a general outline only for guidance and do not constitute any part of an offer or contract. Intending purchasers should not rely on them as statements of representation of fact, but must satisfy themselves by inspection or otherwise as to their accuracy. No person in this firm's employment has the authority to make or give any representation or warranty in respect of the property.