



MEDINA ROAD, LONDON, N7

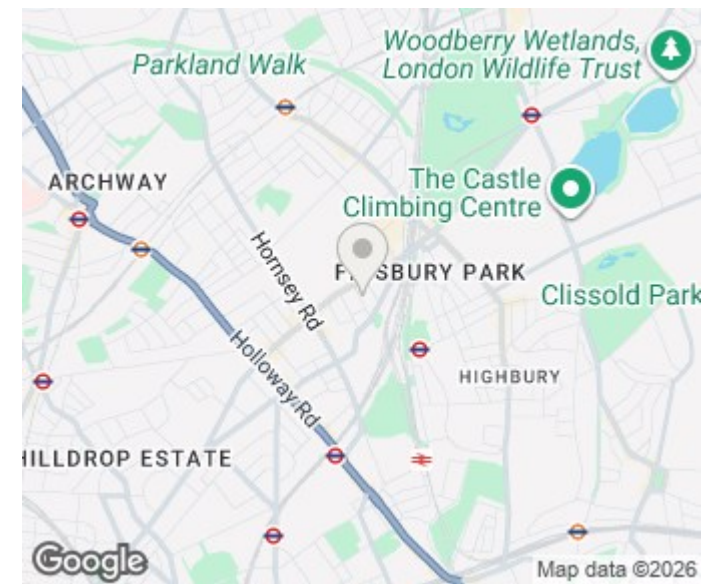
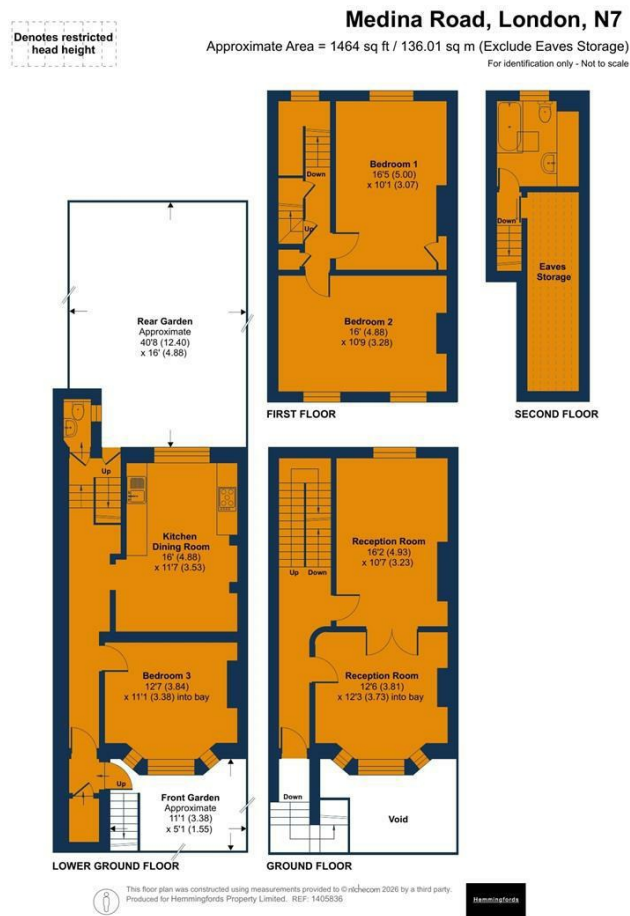
4 BED HOUSE - TERRACED ISLINGTON

£1,250,000
FREEHOLD

This charming and beautifully presented four double-bedroom period home is ideally positioned just moments from Finsbury Park Station, offering generous proportions, flexible living arrangements and a wonderful blend of classic character and modern comfort. Extending to approximately 1,464 sq ft across three floors, with an additional basement area, the property provides an exceptional layout suited to families, professionals and those seeking a well-connected London home.

The ground floor features a spacious kitchen and dining area, thoughtfully designed for modern day living and entertaining. Full-width doors open directly onto a delightful private rear garden, creating the perfect setting for summer gatherings, outdoor dining or simply relaxing in a peaceful setting. The upper floors offer four well-sized double bedrooms, all finished to a high specification, along with a stylish family bathroom. A WC and basement storage area add further practicality to this already substantial home. Scope to add value and make it your dream home!

Hemmingfords



Energy Efficiency Rating		
	Current	Potential
Very energy efficient - lower running costs		
(92 plus) A		
(81-91) B		
(69-80) C		
(55-68) D		
(39-54) E		
(21-38) F		
(1-20) G		
Not energy efficient - higher running costs		
England & Wales	EU Directive 2002/91/EC	

Agents Note: Whilst every care has been taken to prepare these particulars, they are for guidance purposes only. All measurements are approximate and are for general guidance purposes only and whilst every care has been taken to ensure their accuracy, they should not be relied upon and potential buyers/tenants are advised to recheck the measurements

Hemmingfords Sales
 34 Upper Street
 London
 N1 0PN

02038907470
 info@hemmingfords.co.uk
 www.hemmingfords.co.uk

Hemmingfords