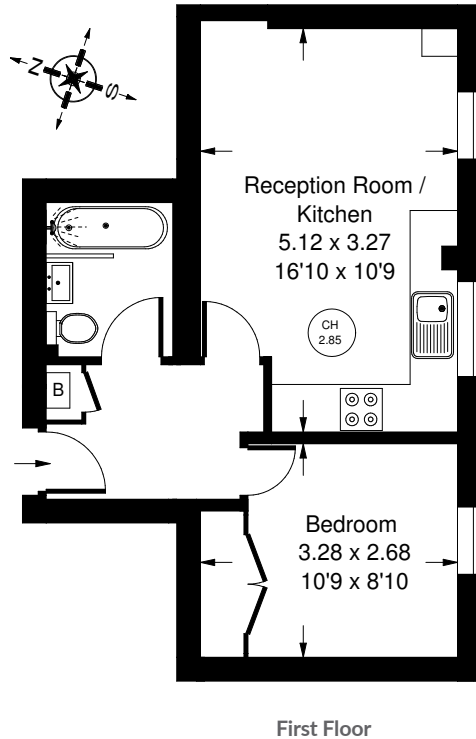


LANCASTER ROAD



Approx. Gross Internal Area  
= 33.2 sq m / 357 sq ft



- One bedroom
- First floor
- Recently refurbished
- Period building
- EPC rating: E
- Council tax band: C



## Lancaster Road, W11 - Share of Freehold Local Authority - **Royal Borough of Kensington & Chelsea**

A superb opportunity to acquire a recently refurbished one bedroom conversion flat situated on the first floor of a charming period building on Lancaster Road, W11, just off Portobello Road. This well-presented property offers a comfortable living space of approximately 357 square feet, featuring an open-plan kitchen and a spacious reception area, ideal for modern urban living. The accommodation includes a double bedroom and a contemporary bathroom, all finished to a high standard. This flat represents an excellent investment or first-time purchase in a highly sought-after location.



Whilst every attempt has been made to ensure the accuracy of the floor plan, measurements are approximate and not to scale. No guarantee is given on the total square footage of the property quoted on the plan. Figures given are for guidance. Plan is for illustration purposes only, not to be used for valuations.