



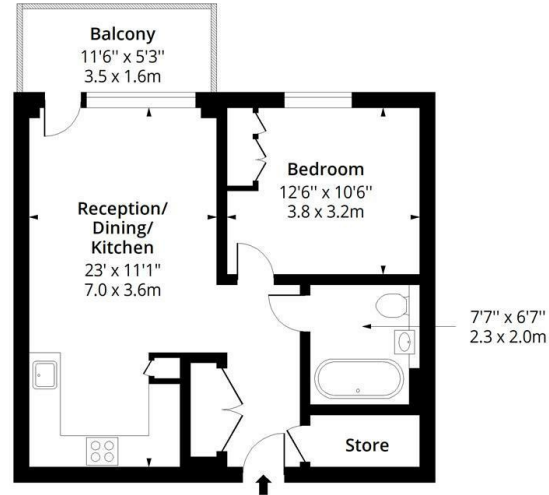
Flat 509, 5 Pettman Crescent, London, SE28 0FW

£1,650 Per month

- One-bedroom modern apartment
- Generous double bedroom
- Well-maintained development
- Bright and spacious open-plan living area
- Contemporary bathroom with quality fittings
- Convenient location close to local amenities
- Fully fitted kitchen with integrated appliances
- Large windows allowing plenty of natural light
- Good transport links nearby

Hopper House SE28

Approx. Gross Internal Area 557 Sq Ft - 51.75 Sq M
 Approx. Gross Balcony Area 63 Sq Ft - 5.85 Sq M



Fifth Floor

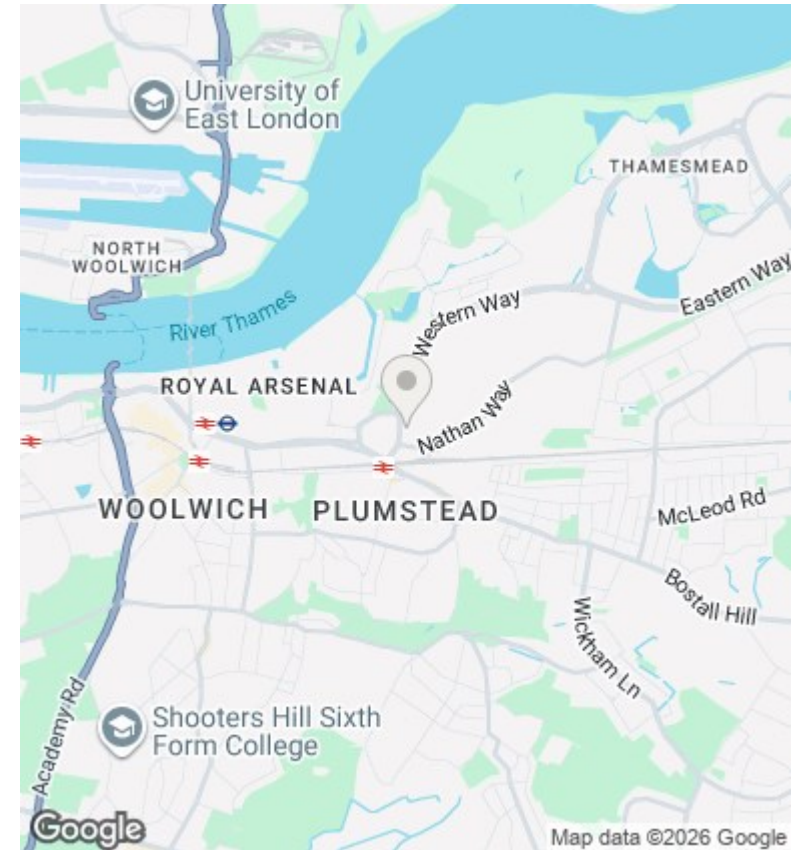
Floor Area 557 Sq Ft - 51.75 Sq M



Measured according to RICS IPMS2. Floor plan is for illustrative purposes only and is not to scale. Every attempt has been made to ensure the accuracy of the floor plan shown, however all measurements, fixtures, fittings and data shown are an approximate interpretation for illustrative purposes only. 1 sq m = 10.76 sq feet.

ipaplus.com

Date: 7/5/2026



Directions

Viewings

Viewings by arrangement only. Call 0208 075 4927 to make an appointment.

Council Tax Band

B

EPC Rating:

B

Energy Efficiency Rating		Current	Potential
<i>Very energy efficient - lower running costs</i>			
(92 plus) A			
(81-91) B		85	85
(69-80) C			
(55-68) D			
(39-54) E			
(21-38) F			
(1-20) G			
<i>Not energy efficient - higher running costs</i>			
England & Wales		EU Directive 2002/91/EC	