



Let **UK** Home

1 Bedrooms

Flat - Studio

Located in London

£3,420 Per Month



info@letukhome.co.uk

<https://www.letukhome.co.uk/>

01795 358 886



1 Newcastle Place London

W2 1DB



Let UK Home present this spectacular studio in Westmark Tower in West End Gate.

The studio comprises a spacious open kitchen with a stylishly attached dining area, a magnificent living room, one bright bedroom and one modern bathroom.

Residents of this exceptional development will have exclusive use of the spa, fitness centre, indoor swimming pool. Furthermore, residents will also benefit from a concierge.

There are many famous schools around, and educational resources are rich. It is very convenient to reach universities such as UCL, LSE, RAM, IC, etc.

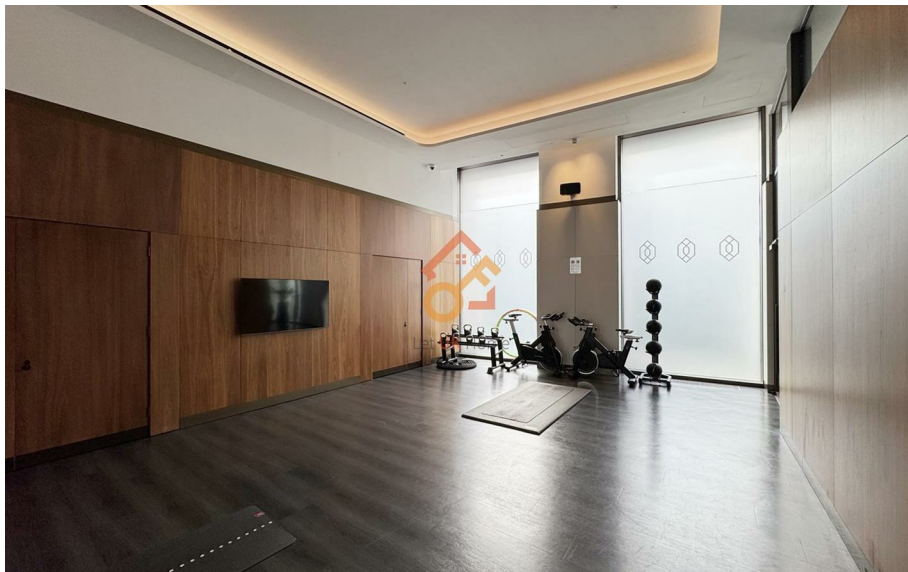
The development is surrounded by many attractions. The Sherlock Holmes Museum, Wallace Collection, Madame Tussauds, and Little Venice, the same check-in place as Jay Chou, are all within walking distance of the development. It is also very convenient to reach Big Ben, Westminster Abbey, Buckingham Palace, etc. which are a little further away. In addition, there are many cozy and impressive cafes, bars, and galleries around.

1 Newcastle Place London

£3,420 Per Month

- 5th Floor
- Concierge Service
- The Gym
- EPC Rating: B

- 24h Security
- Swimming Pool
- Cinema & Game Room



Manhattan Apartment Type EE



Apartment	1.4.6, 1.5.6, 1.6.6, 1.7.6, 1.8.6, 1.9.6, 1.10.6		Key W Wardrobe C Cupboard U Utility
Level	4, 5, 6, 7, 8, 9 & 10		
Living Room	3.81 x 3.86 m	12'6" x 12'8"	
Kitchen	2.45 x 2.56 m	8'0" x 8'5"	
Bedroom	2.85 x 3.20 m	9'4" x 10'6"	
Total Internal Area	42.72 m²	459 ft²	

Layouts shown here are for approximate measurements only, they are not necessarily shown to scale. Exact layout and sizes of properties may vary. North arrow refers to site plan.



Let **UK** Home

3F 2 Eastbourne Terrace
Paddington
London
W2 6LG

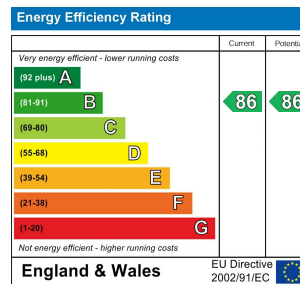
01795 358 886

info@letukhome.co.uk

Council Tax Band: E

Local Authority:

Agents Note: Whilst every care has been taken to prepare these particulars, they are for guidance purposes only. All measurements are approximate and are for general guidance purposes only and whilst every care has been taken to ensure their accuracy, they should not be relied upon and potential buyers/tenants are advised to recheck the measurements.



<https://www.letukhome.co.uk/>