

## Canterbury Crescent, Brixton, SW9

2 bedroom flat - conversion for sale

£550,000

Leasehold

### Property Details

This charming two-bedroom, two-bathroom apartment with a private terrace is set on the first floor of an elegant Victorian mansion block. Flooded with natural light, it blends period character with contemporary comfort, offering a serene and inviting home. The semi-open plan reception and kitchen are divided by a central chimney breast, creating defined yet sociable spaces ideal for relaxing, dining, and entertaining. The reception features a striking bay with sash windows, providing a cozy window seating nook and versatile space for lounging and dining. The kitchen is fitted with cream cabinetry, dark worktops, a tiled splashback, oven, and gas hob. The principal bedroom includes built-in wardrobes, an en-suite shower room, and French doors opening onto the private terrace, while the second bedroom sits opposite for privacy and shares access to the main bathroom. Additional benefits include excellent natural light, soundproofing, and a new boiler installed in 2024.

### Features

- Two double bedrooms
- Two bathrooms
- Terrace
- Elegant Victorian mansion building
- South-facing resident's yard with bike storage
- Characterful reclaimed oak flooring
- Situated in the heart of Brixton
- A rich variety of local amenities including Brixton Village
- Victoria Line and Overground both a four-minute walk
- Chain-free

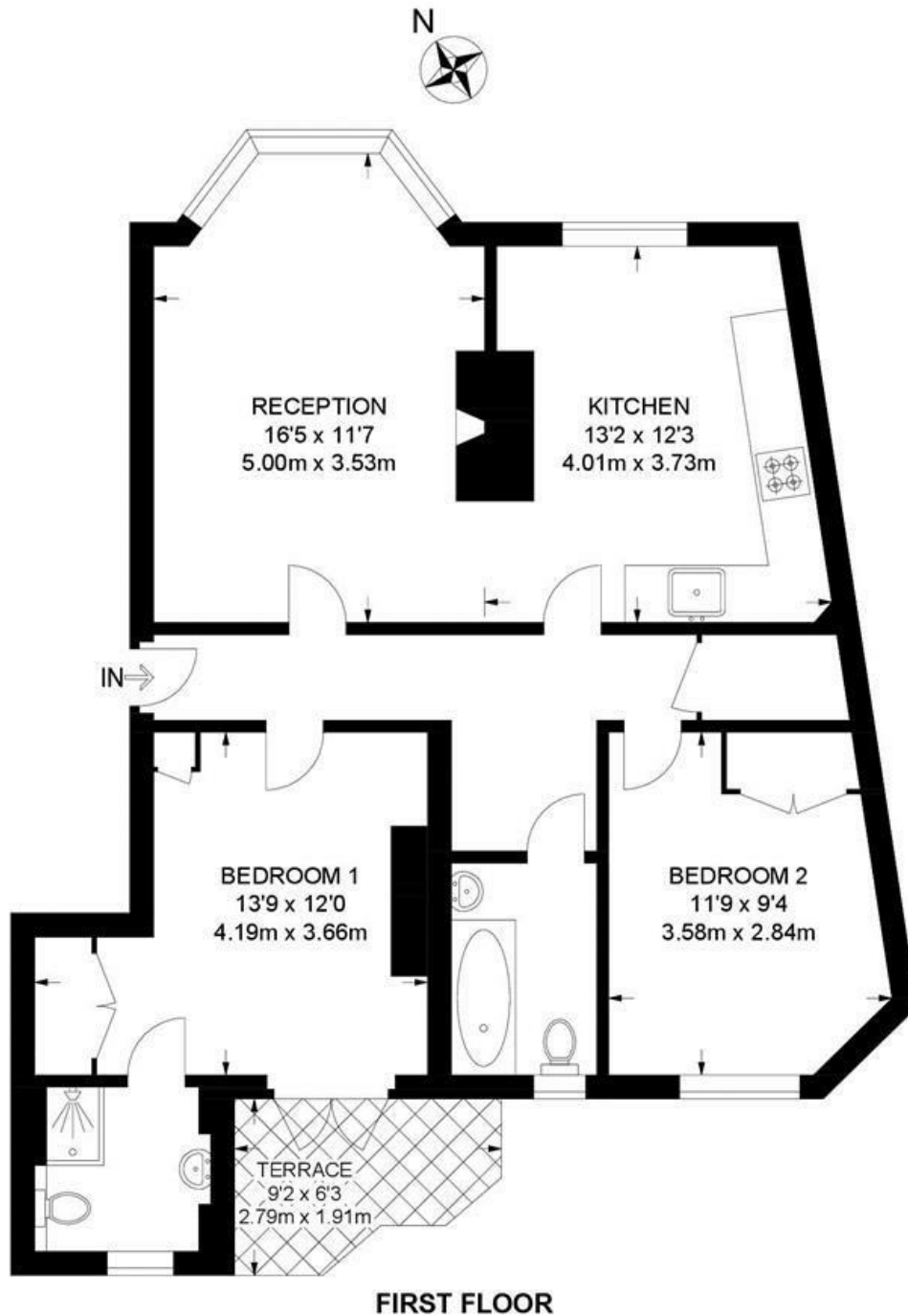
Council tax band D    EPC rating D (58)



Canterbury Crescent, Brixton, SW9

**Canterbury Crescent, SW9**  
**2 Bedroom Flat**

APPROXIMATE GROSS INTERNAL AREA: 773 SQ FT / 71.8 SQ M



While we try our very best, floor plans are produced as a guide only and we take no responsibility for the precise accuracy with which any property is represented.

Canterbury Crescent, Brixton, SW9

