



Flat 1

1 Milton Road, Bournemouth

Council Tax band: B

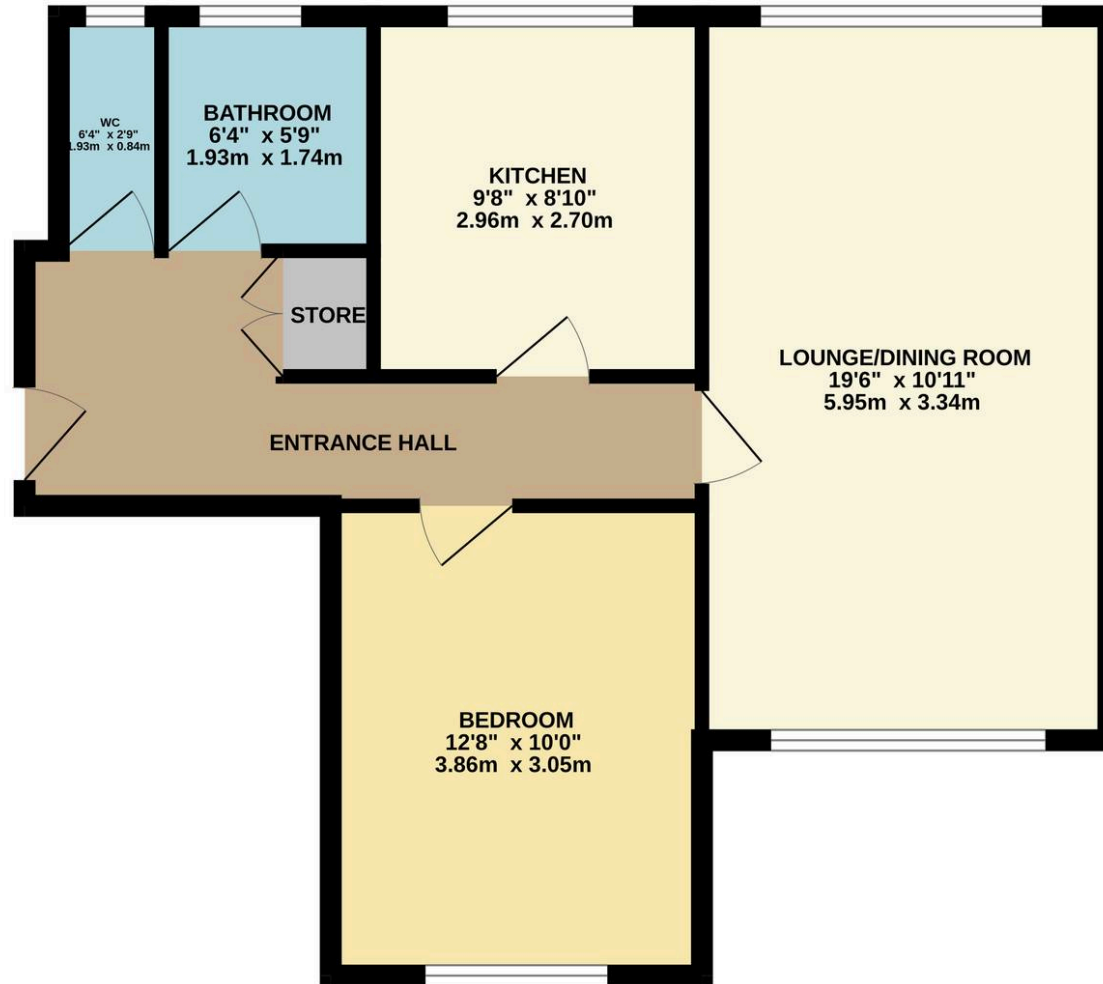
Tenure: Share of Freehold

- Spacious One Bedroom Ground Floor Apartment
- Popular Location Near To Charminster High Street
- Dual Aspect Lounge And Dining Area
- Brand New Modern Kitchen
- Garage Big Enough For A Car And Two Visitor Parking Spaces
- Peaceful And Well Maintained Communal Gardens
- Fully Tiled Family Sized Bathroom And Separate WC
- Excellent Transport Links Nearby, Including Bournemouth Trainstation
- 900+ Years Remaining On the Current Lease
- EPC - C | Council Tax - B





GROUND FLOOR
576 sq.ft. (53.5 sq.m.) approx.



TOTAL FLOOR AREA: 576 sq.ft. (53.5 sq.m.) approx.

Whilst every attempt has been made to ensure the accuracy of the floorplan contained here, measurements of doors, windows, rooms and any other items are approximate and no responsibility is taken for any error, omission or mis-statement. This plan is for illustrative purposes only and should be used as such by any prospective purchaser. The services, systems and appliances shown have not been tested and no guarantee as to their operability or efficiency can be given.

Made with Metropix 62026