



AMIT CHAUHAN

exp[®] UK

@ amit.chauhan@exp.uk.com

🌐 amitchauhan.exp.uk.com

☎ 07816 228 619

71 Woodpecker Way,
Guide Price £360,000

3 2 1



- Three-bedroom end of terrace home in Cambourne
- Move-in-ready condition
- Lounge with French doors to the garden
- Main bedroom with en-suite shower room
- Freehold
- Beautifully presented throughout
- Spacious kitchen/dining area
- Downstairs WC
- Driveway plus separate allocated parking space and garage
- Ref - AC1436





Approximate Gross Internal Area
 Ground Floor = 44.0 sq m / 474 sq ft
 First Floor = 43.5 sq m / 468 sq ft
 Garage = 13.1 sq m / 141 sq ft
 Total = 100.6 sq m / 1,083 sq ft

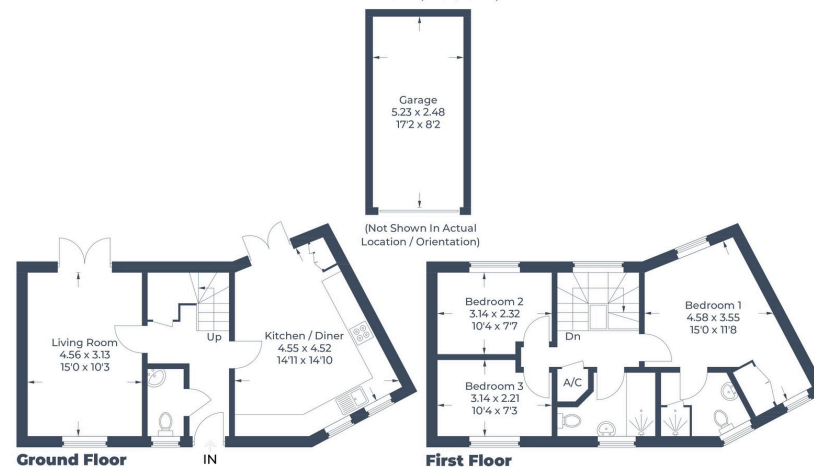


Illustration for identification purposes only, measurements are approximate, not to scale.
 © CJ Property Marketing Produced for LL M Homes Ltd

Woodpecker Way is a lovely three-bedroom home in Cambourne, offered in beautiful move-in condition and ideal for someone looking for a home they can settle straight into. The ground floor gives you a really practical layout. There is a spacious kitchen/dining area with access out to the garden, making it a great space for everyday family life, cooking, eating and entertaining. You also have a good-sized lounge with French doors opening onto the garden, giving the room a bright and open feel. A downstairs WC completes the ground floor. Upstairs, the main bedroom is bright, spacious and benefits from its own en-suite shower room. There are also two further separate bedrooms and a family bathroom, making the layout work well for a small family, first-time buyers, guests or even a home office. Outside, the property benefits from a driveway, a separate allocated parking space and an en bloc garage.

