

# LIVERMORES

THE ESTATE AGENTS

2 Bedrooms

Bungalow - Semi Detached

Price Guide

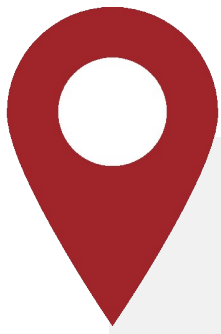
£425,000

Located in

Dartford



[www.livermores.co.uk](http://www.livermores.co.uk)



## 25 Brentfield Road

Dartford Kent DA1 1YJ



GUIDE PRICE £425,000 TO £450,000... This delightful semi-detached bungalow offered to the market with NO ONWARD CHAIN, this property is ready for you to move in and make it your own. The bungalow boasts two generously sized double bedrooms, and a spacious lounge that has been extended. Located on a popular residential road, the property features off-road parking, ensuring that you will never have to worry about finding a space for your vehicle. A garage located to the rear adds further convenience, providing additional storage or the potential for a workshop. This bungalow is perfect for those looking to downsize or for first-time buyers and is located approximately 1 mile for Dartford Station. VIEWING HIGHLY RECOMMENDED

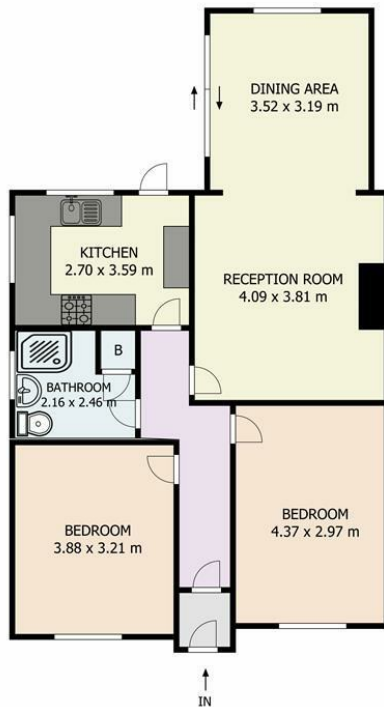


# 25 Brentfield Road

£425,000 Freehold



- GUIDE PRICE £425,000 TO £450,000
- SEMI-DETACHED BUNGALOW
- SPACIOUS LOUNGE
- FITTED KITCHEN
- SIMILAR PROPERTIES REQUIRED
- NO ONWARD CHAIN
- 2 DOUBLE BEDROOMS
- OFF ROAD PARKING
- EXCELLENT POTENTIAL
- EPC RATING D COUNCIL TAX BAND D



Ground Floor

Brentfield Road, DA1 1YJ

This plan serves solely as a layout guide, and no liability is assumed for errors, omissions, or inaccuracies. It was developed in accordance with the RICS Code of Measuring Practice. All dimensions, including windows, doors, and the total gross Internal area (GIA), are approximate and measured internally. All measurements have been taken at the widest points unless otherwise stated. The first measurement provided refers to the vertical wall. For accurate measurement please consult a certified architect or surveyor prior to making any decisions based on this plan.

## Council Tax Band D

## Local Authority Dartford

Agents Note: Whilst every care has been taken to prepare these particulars, they are for guidance purposes only. All measurements are approximate and are for general guidance purposes only and whilst every care has been taken to ensure their accuracy, they should not be relied upon and potential buyers/tenants are advised to recheck the measurements.

Energy Efficiency Rating		
	Current	Potential
Very energy efficient - lower running costs		
(92 plus) <b>A</b>		
(81-91) <b>B</b>		
(69-80) <b>C</b>		78
(55-68) <b>D</b>	58	
(39-54) <b>E</b>		
(21-38) <b>F</b>		
(1-20) <b>G</b>		
Not energy efficient - higher running costs		
England & Wales		EU Directive 2002/91/EC

1 Hythe Street

Dartford

Kent

DA1 1BE

**LIVERMORES**  
THE ESTATE AGENTS

dartford@livermores.co.uk

01322 228090

www.company.co.uk