



**3 Bed
House - End
Terrace
located in
Kewnsam
Asking Price £340,000**



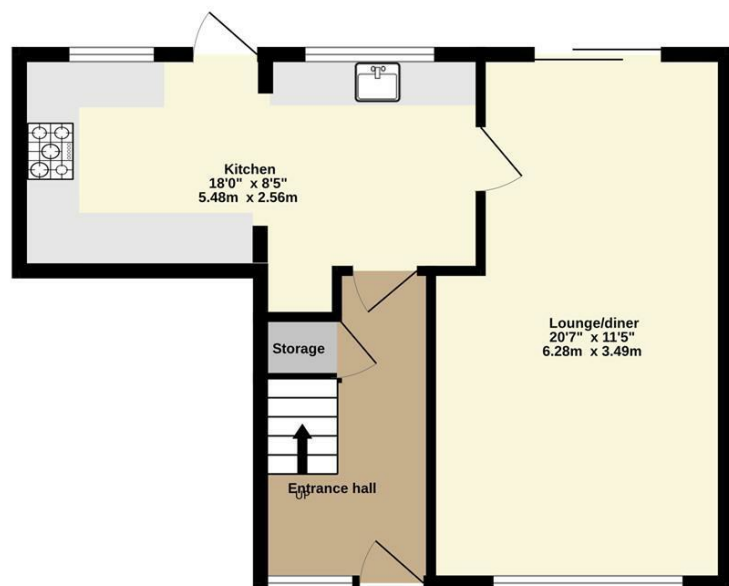
6 Arundel Walk
Keynsham
Bristol
BS31 2JT



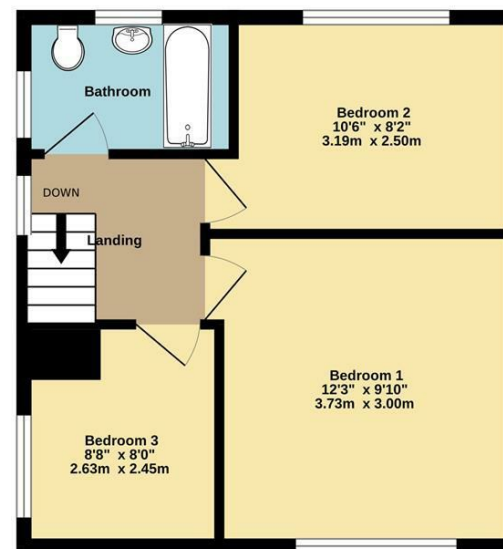


DIRECTIONS

Ground Floor
452 sq.ft. (42.0 sq.m.) approx.



1st Floor
388 sq.ft. (36.1 sq.m.) approx.



TOTAL FLOOR AREA : 840 sq.ft. (78.0 sq.m.) approx.

Whilst every attempt has been made to ensure the accuracy of the floorplan contained here, measurements of doors, windows, rooms and any other items are approximate and no responsibility is taken for any error, omission or mis-statement. This plan is for illustrative purposes only and should be used as such by any prospective purchaser. The services, systems and appliances shown have not been tested and no guarantee as to their operability or efficiency can be given.

Made with Metropix ©2026

Energy Efficiency Rating		Current	Potential
Very energy efficient - lower running costs			
(92 plus) A			
(81-91) B			
(69-80) C			
(55-68) D		69	
(39-54) E			
(21-38) F			
(1-20) G			
Not energy efficient - higher running costs			
England & Wales		EU Directive 2002/91/EC	

CONTACT

Unit 1 Market Walk
Keynsham
Bristol
BS31 1FS

E: enquiries@gregorys.click
T: 01179 866644
gregorys.click



GREGORYS
— ESTATE AGENTS —