



# 27 Northfield Park

Northfield, Edinburgh, EH8 7QU

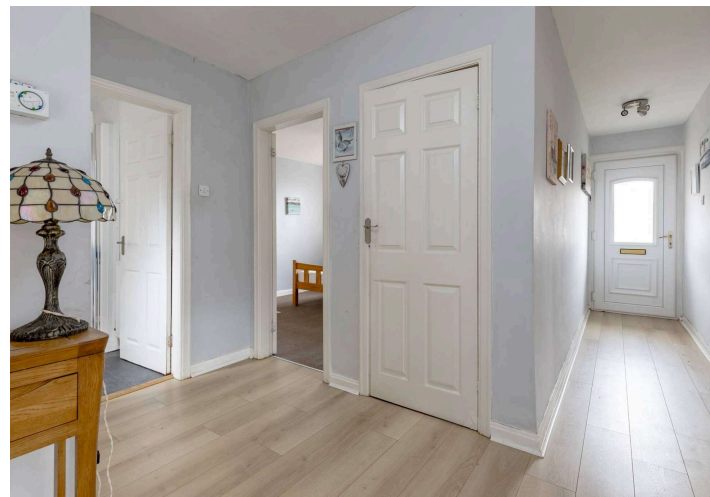


VMH ESTATE AGENTS



## Delightful lower villa with private garden & driveway in a well established residential area

- Sitting/dining room
- Well-appointed kitchen
- 2 double bedrooms
- 3-piece shower room
- Private garden & driveway
- Gas central heating & double glazing
- Bright & well proportioned
- Popular & convenient location



Fixed Price:  
**£255,000**



 Freehold

Further information can be found in the home report.

## About the Property

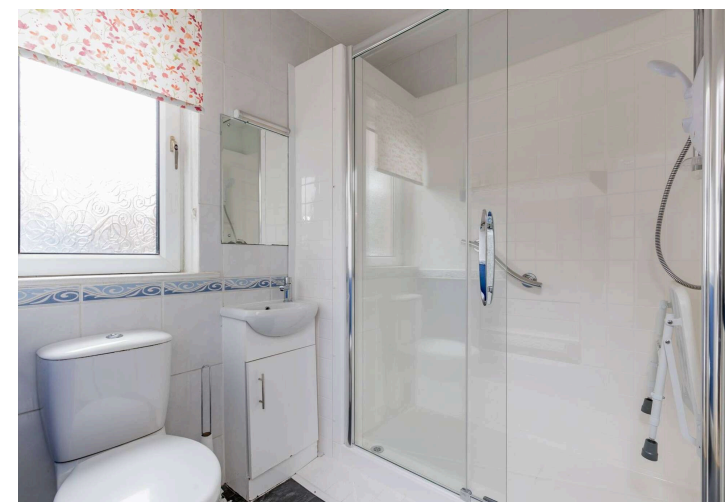
A bright and generously proportioned two-bedroom lower villa, set within a popular and well-established residential area.

This appealing home offers spacious accommodation throughout and further benefits from private garden and a driveway.

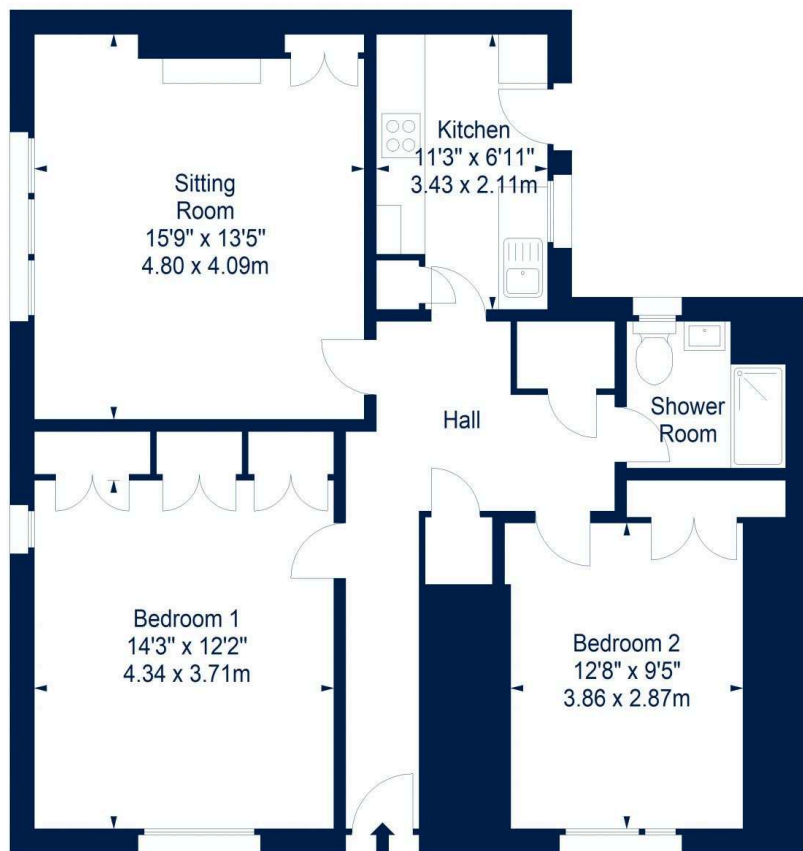
Enhanced by gas central heating and double glazing, the property provides comfortable and efficient living, ideally suited to a range of buyers.

### Extras

All fitted floor coverings, blinds, light fittings, cooker, extractor hood, fridge/freezer, washing machine, and shed included in the sale price. No warranties or guarantees given.



# 27 Northfield Park, Edinburgh, Midlothian, EH8 7QU



Ground Floor



House - Approx. Gross Internal Area - 825 Sq Ft - 76.64 Sq M

For identification only. Not to scale. © SquareFoot 2026



## Location

The property is located in the popular area of Northfield, which lies a short distance to the east of the city centre. Within the vicinity there is an excellent range of amenities with further shopping available at Meadowbank Retail Park and Fort Kinnaird. The open spaces of Arthur's Seat and Holyrood Park are close by along with Figgate Park, Duddingston Loch and Portobello Beach. Regular bus services run to and from Edinburgh city centre and there are good links to all major motorway networks via the A1 and Edinburgh City Bypass.



Virtually staged



VMH ESTATE AGENTS



VMH SOLICITORS

*More* is our middle name.

**Registered Office: 8 Sibbald Walk, Edinburgh, EH8 8FT**

 **0131 622 2626**

 **property@vmh.co.uk**

 **vmh.co.uk**

 **DX: 552210, Edinburgh 68**

---

The dimensions provided are for illustration purposes only; detailed measurements should be taken personally. No documentation will be exhibited in respect of the compliance or otherwise of replacement windows. Although every attempt has been taken to ensure accuracy, the details within the brochure are not guaranteed or warranted and will not form part of any future contract to buy.