



Moulding Lane, SE14

£250,000

Shared ownership at 50% A two bedroom modern apartment in one of New Cross' most sought after developments. This superb property is one of the larger two bedrooms within the development, is particularly light and benefits from a private balcony. This property is also available as full ownership at £500,00

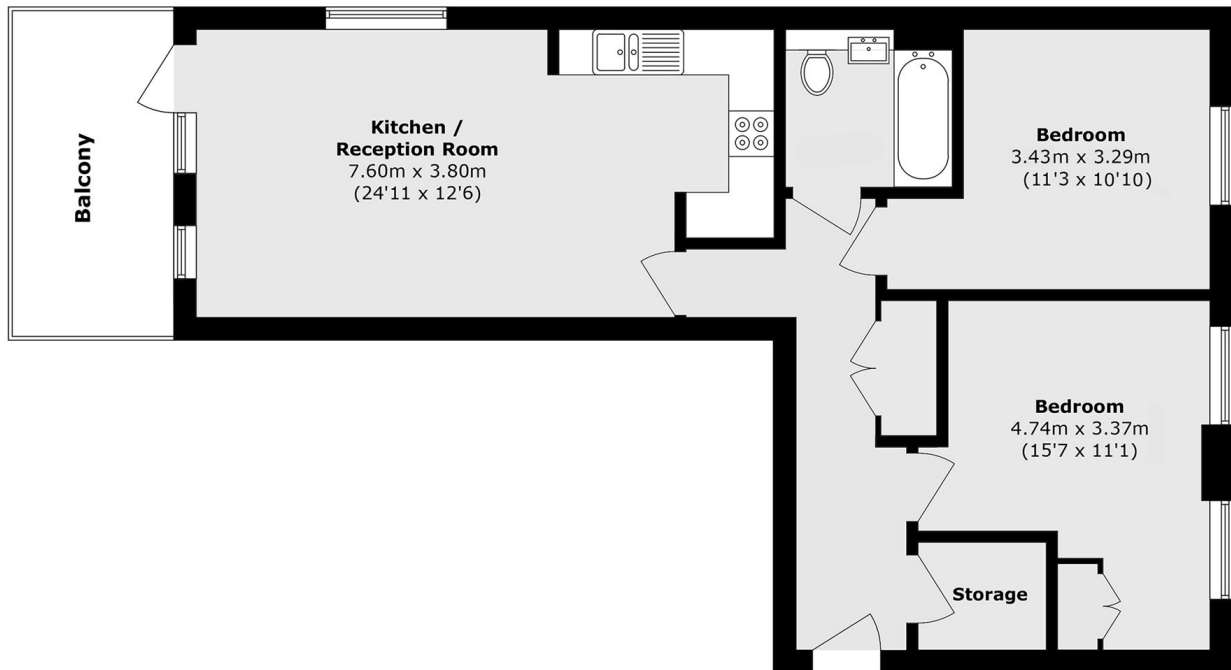
Stylishly presented and with an immaculate finish throughout accommodation comprises inviting entrance hall which leads through to bright open plan kitchen/reception room, the kitchen is contemporary in style and provides plenty of space for dining whilst the living area opens to a private balcony and there is a large family bathroom.

Moulding Lane is situated in the heart of New Cross with an eclectic mix of bars, restaurants, and independent coffee shops on your doorstep. New Cross, Deptford and Deptford Bridge DLR are all within

Features

- Panoramic City Views
- Two Double Bedrooms
- Concierge
- Cycle Storage
- Private Balcony
- Option To Buy 100%

Moulding Lane, London, SE14



Total area (approx.): 74.8 sq. m (805.1 sq. ft)

Balcony area (approx.): 8.6 sq. m (92.6 sq. ft)